

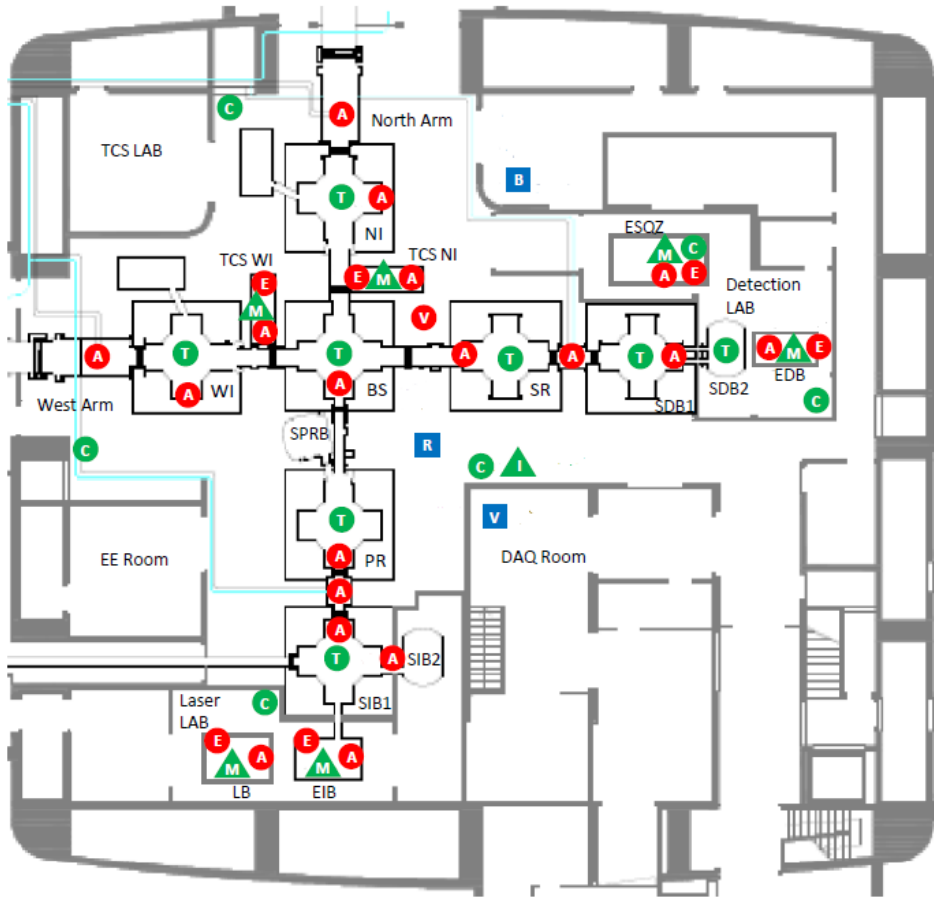
# **AdV ENV Probe Maps (Fast and Slow Sensors)**

R. De Rosa, I. Fiori

VIR-0152B-19

# Probe Maps

## CEB

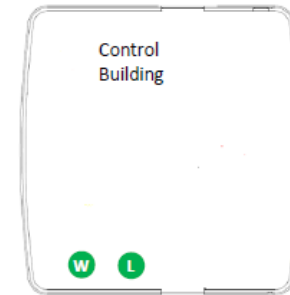
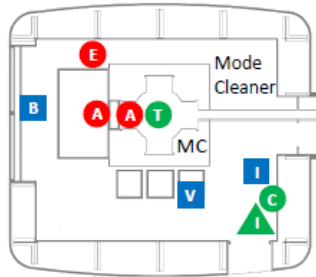


- A Accelerometer
- E Episensor
- V Velocimeter
- T Thermometer
- C Combined (temp.+press.+humid.)
- ▲ M Microphone
- ▲ I Infrasound microphone
- B Magnetometer
- V Voltage
- I Current
- R Radio frequency antenna

# Probe Maps

## MCB and COB

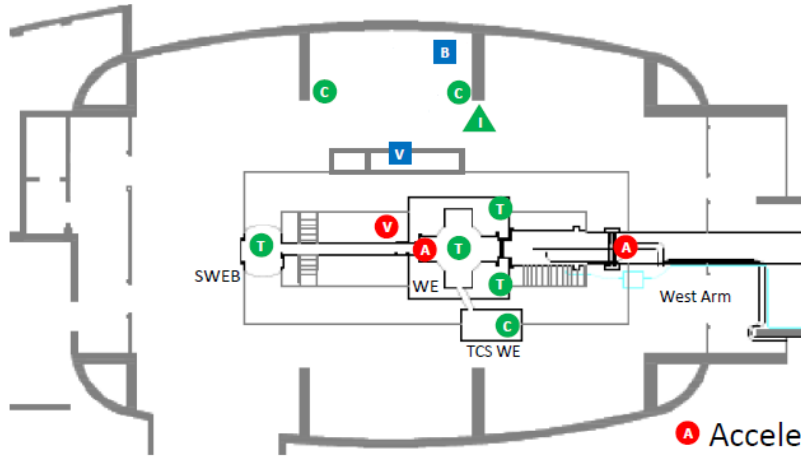
- A** Accelerometer
- E** Episensor
- V** Velocimeter
- T** Thermometer
- C** Comb. (temp.+press.+hum.)
- M** Microphone
- I** Infrasound microphone
- B** Magnetometer
- V** Voltage probe
- I** Current probe
- R** Radio frequency antenna



- W** Weather Station
- L** Lightning Station

# Probe Maps

## NEB and WEB



- A** Accelerometer
- E** Episensor
- V** Velocimeter
- T** Thermometer
- C** Combined (temp.+press.+humid.)
- M** Microphone
- I** Infrasound microphone
- B** Magnetometer
- V** Voltage
- I** Current
- R** Radio frequency antenna

