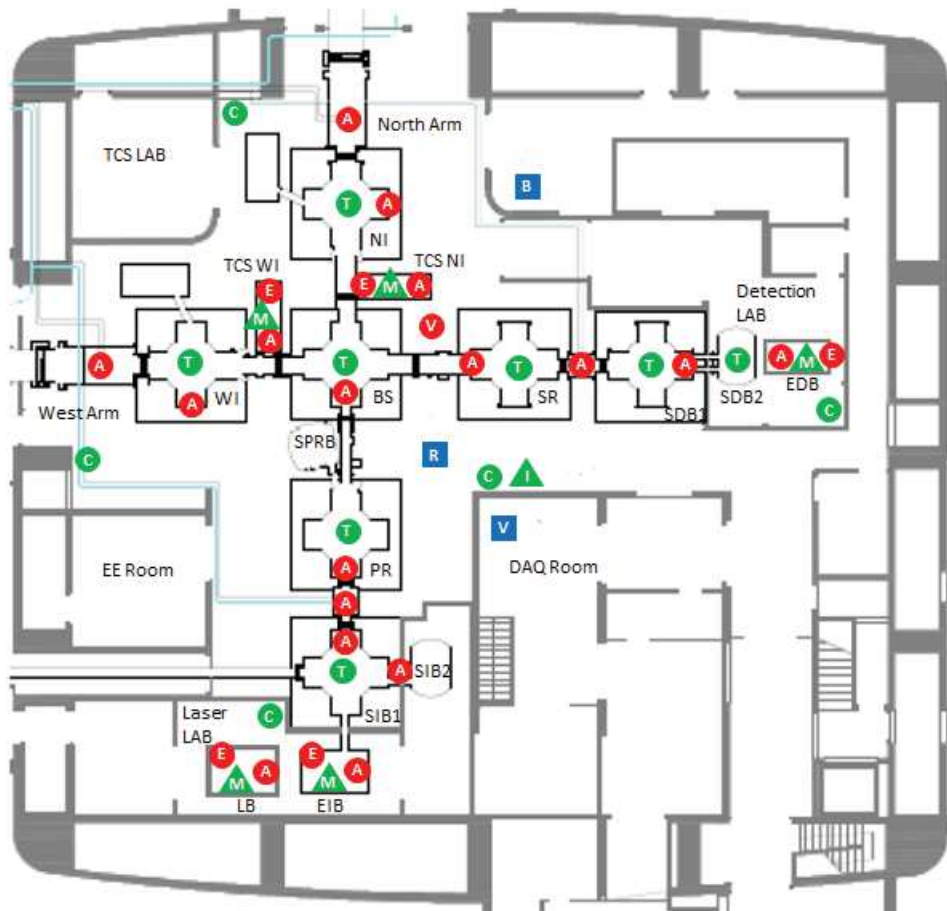


Probe Maps

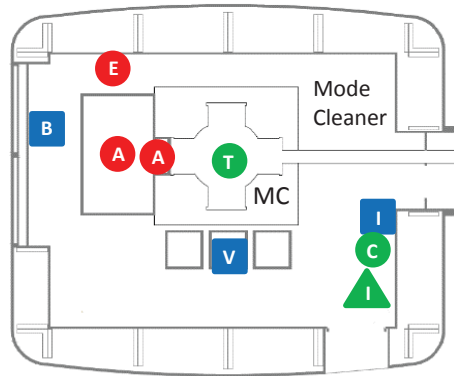
CEB



- A** Accelerometer
- E** Episensor
- V** Velocimeter
- T** Thermometer
- C** Comb. (temp.+press.+hum.)
- M** Microphone
- I** Infrasound microphone
- B** Magnetometer
- V** Voltage probe
- I** Current probe
- R** Radio frequency antenna

Probe Maps

MCB and NEB



- A Accelerometer
- E Episensor
- V Velocimeter
- T Thermometer
- C Comb. (temp.+press.+hum.)
- M Microphone
- I Infrasound microphone
- B Magnetometer
- V Voltage probe
- I Current probe
- R Radio frequency antenna

