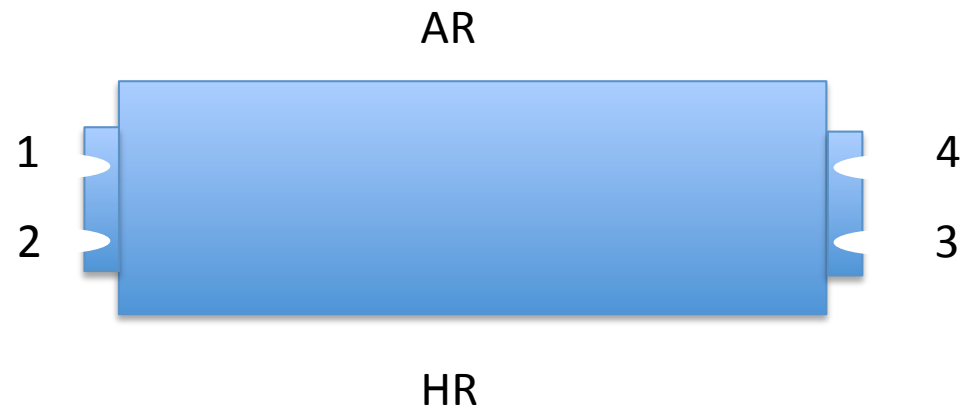


Compared analysis of payload failures

Helios Vocca
&
Flavio Travasso

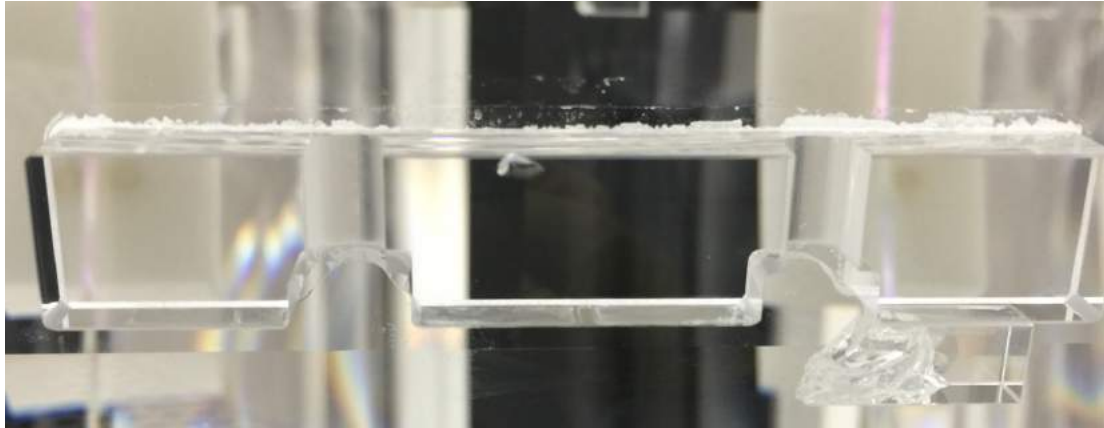
17/03/2016

Mirror reference system



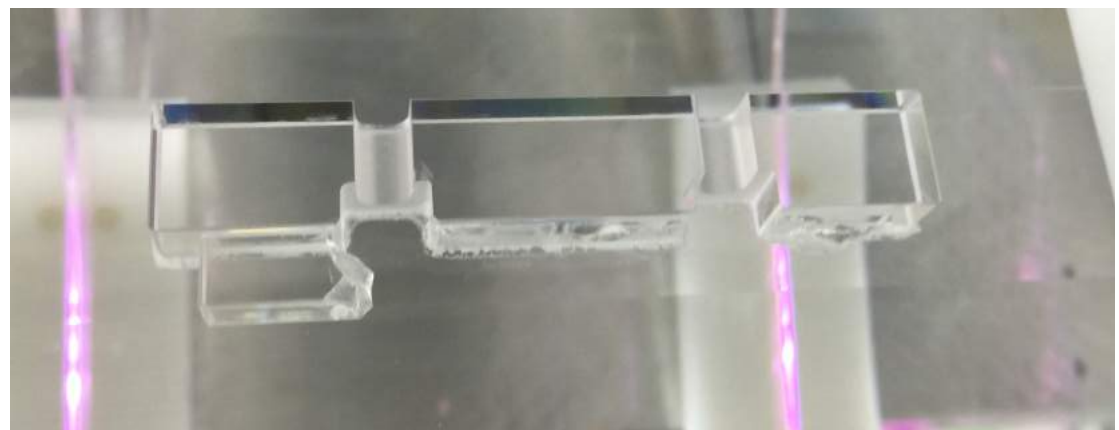
View from the top

WI - Ears view after the crash



1

2



3

4

WI - Marionetta view after the crash



1

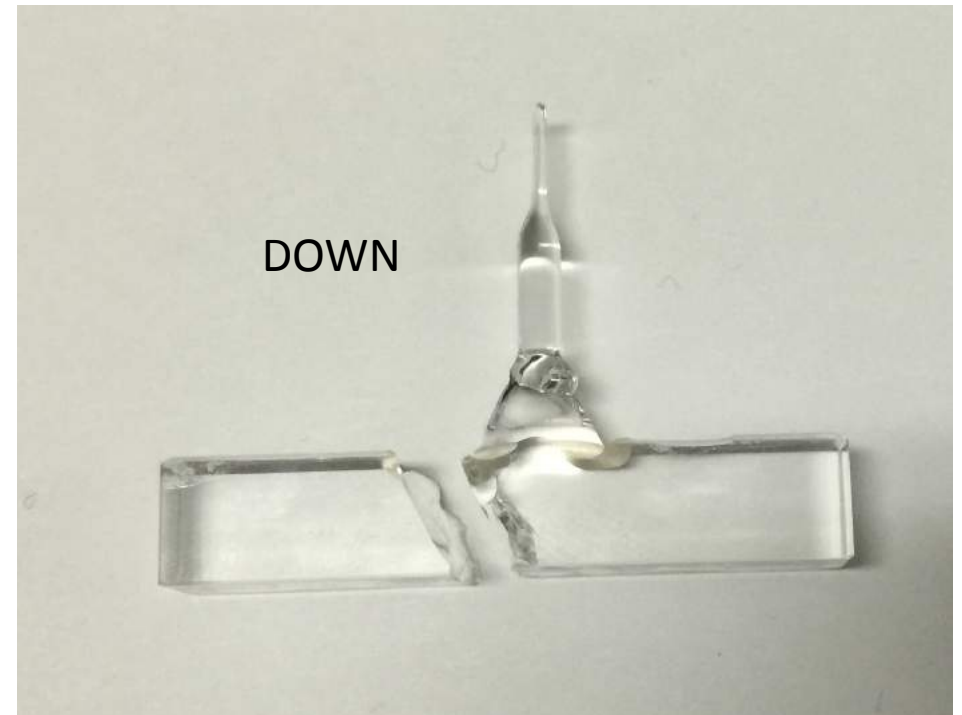
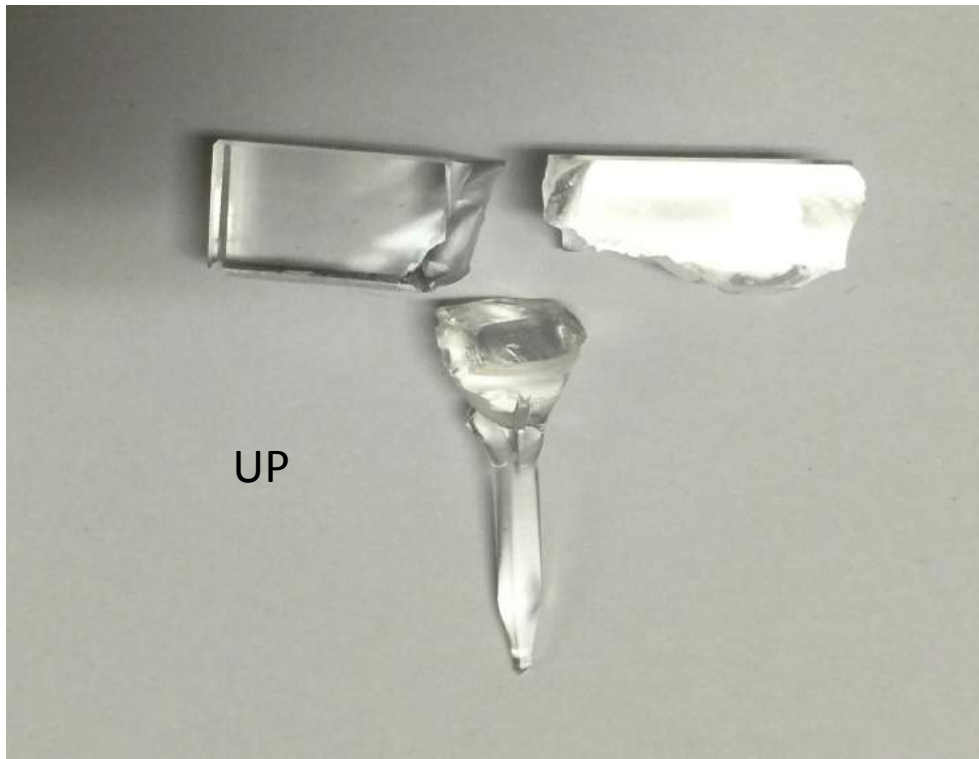
2



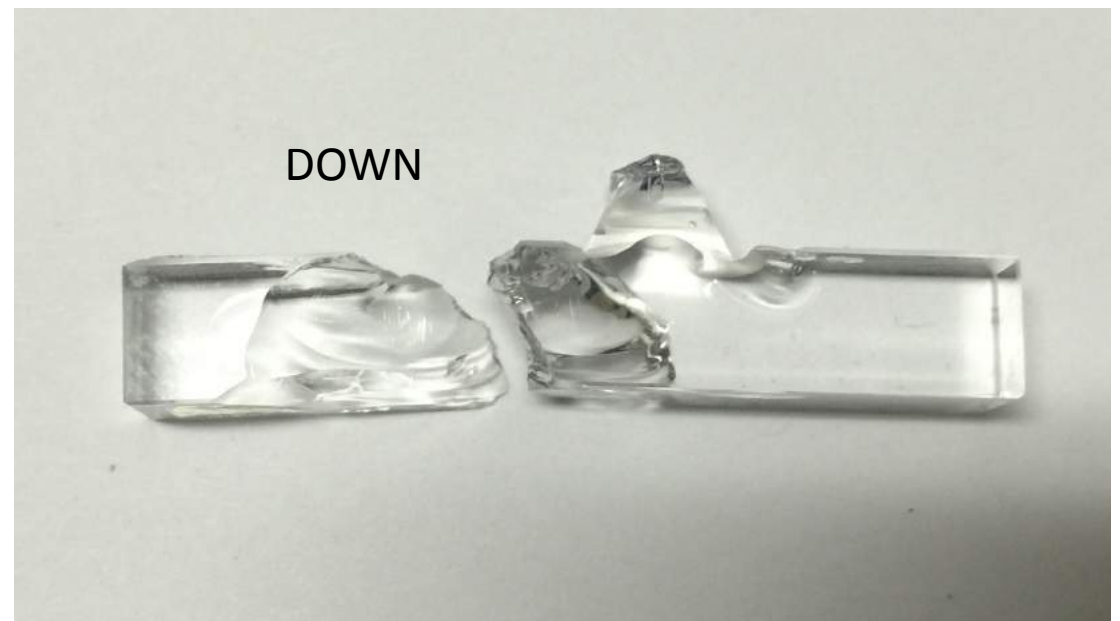
3

4

WI - Anchors n°1

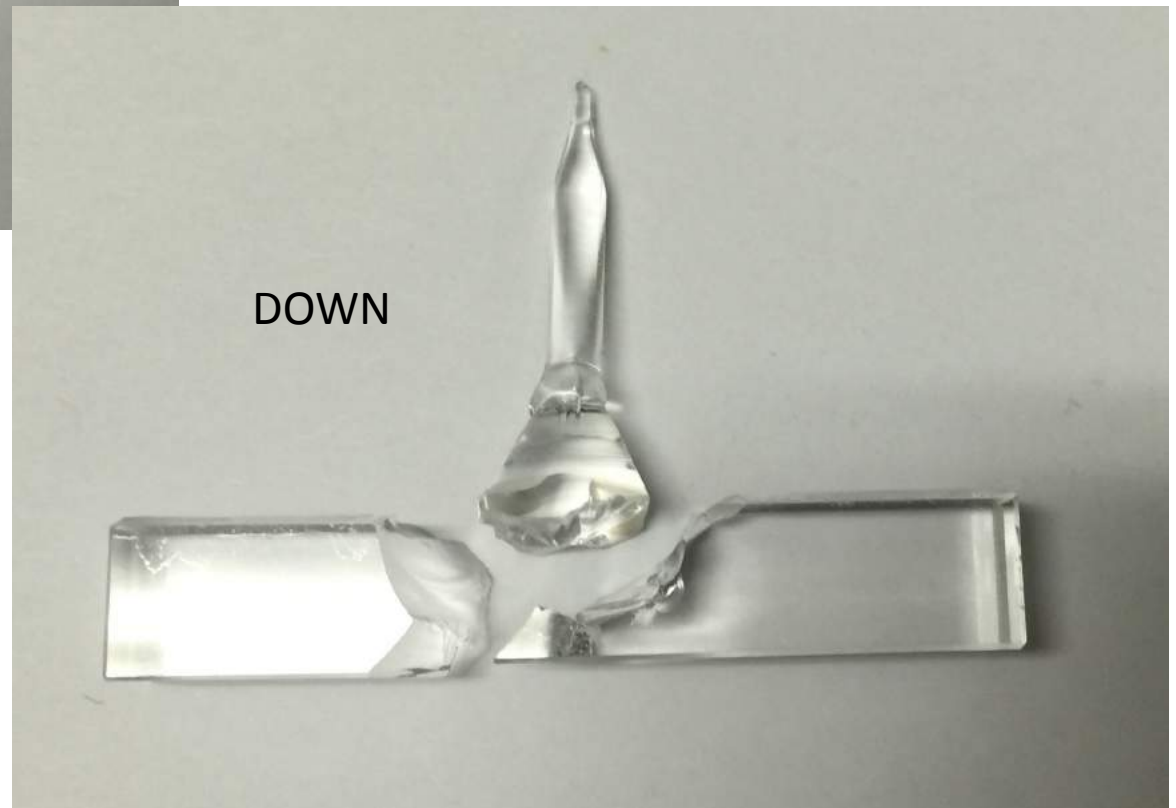
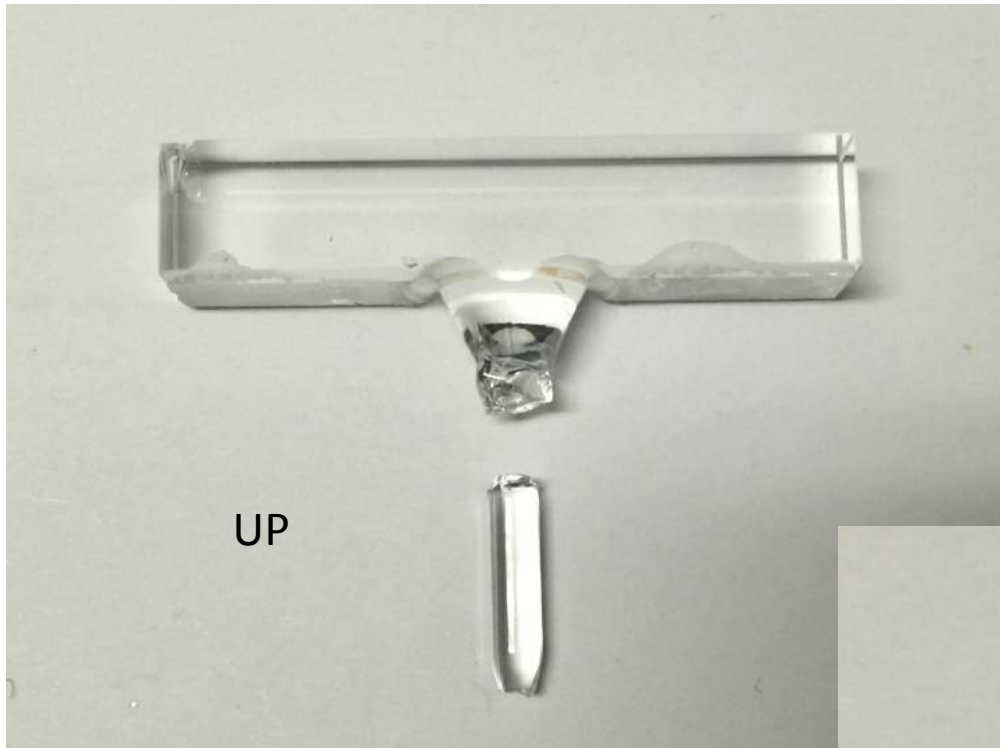


WI - Anchors n°2

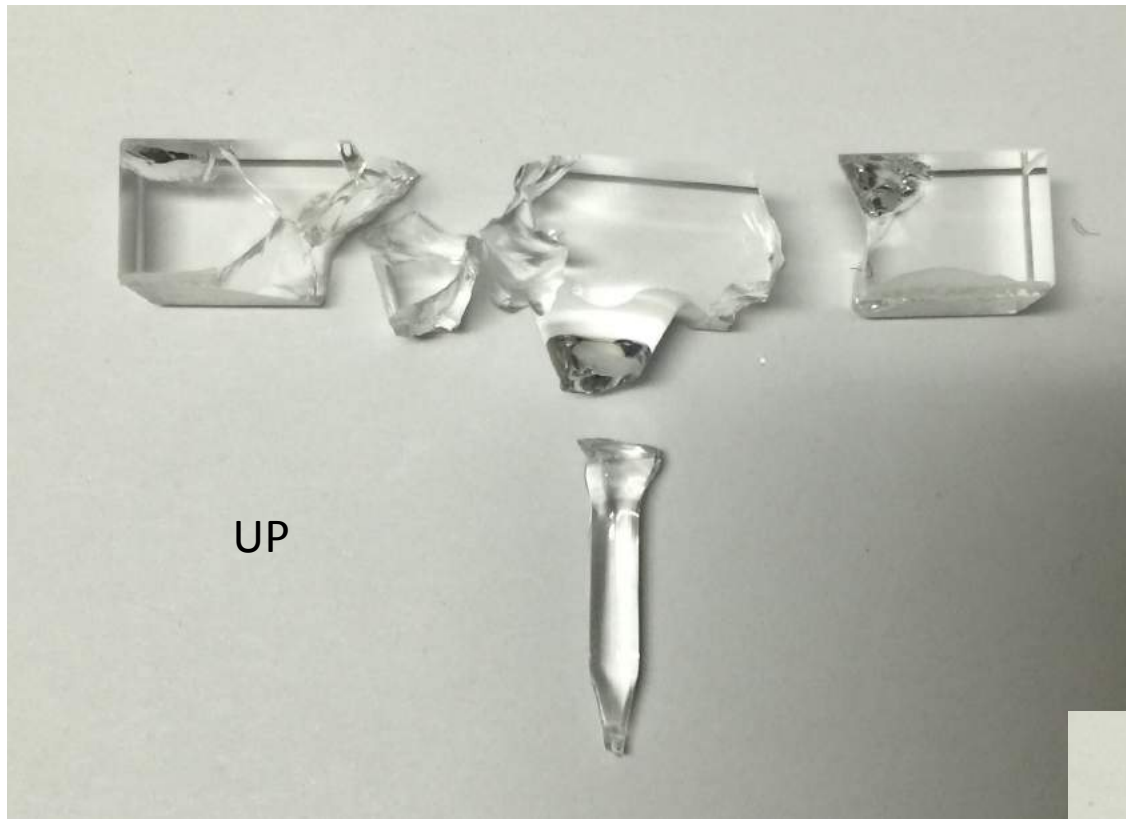


WI - Anchors n°3

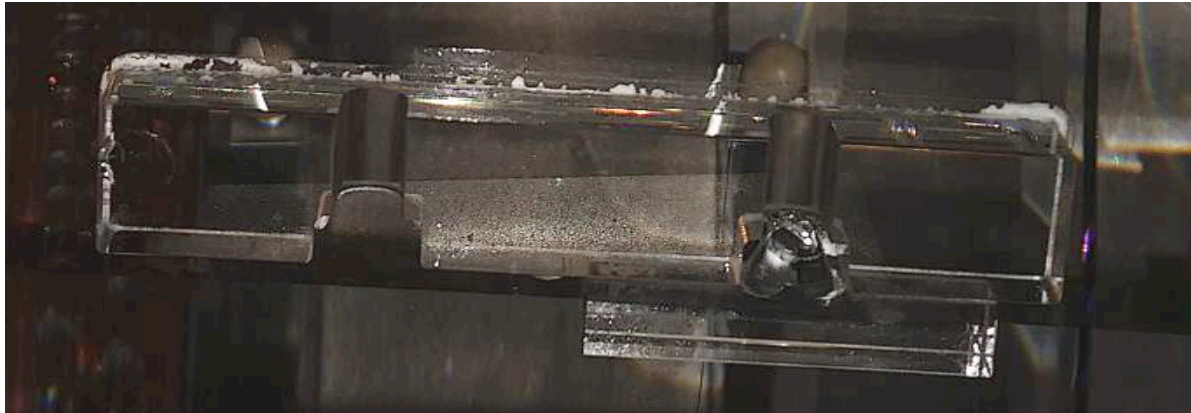
According to the data the crash begun from this fiber: it can be started from the lower cone (or at least from the upper welding...).



WI - Anchors n°4

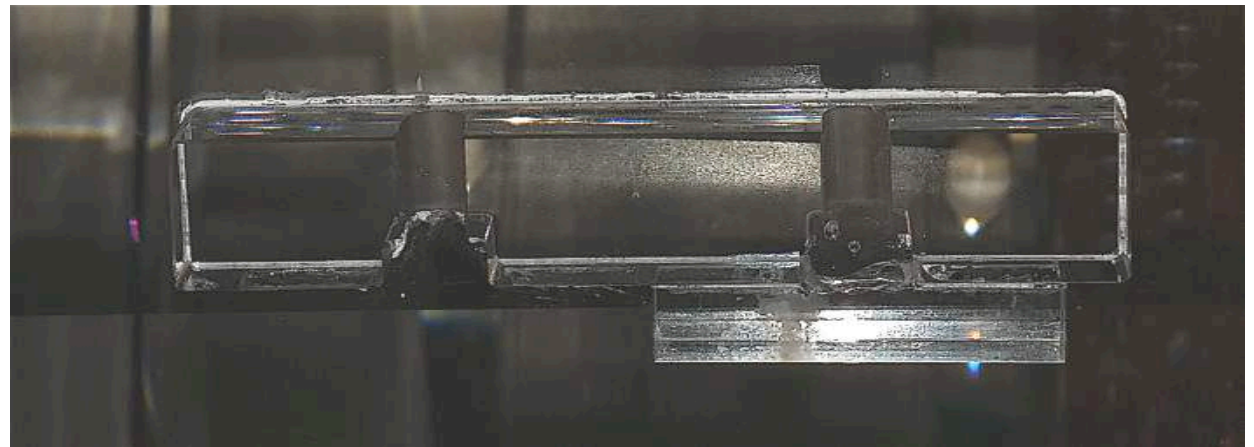


NI - Ears view after the crash



1

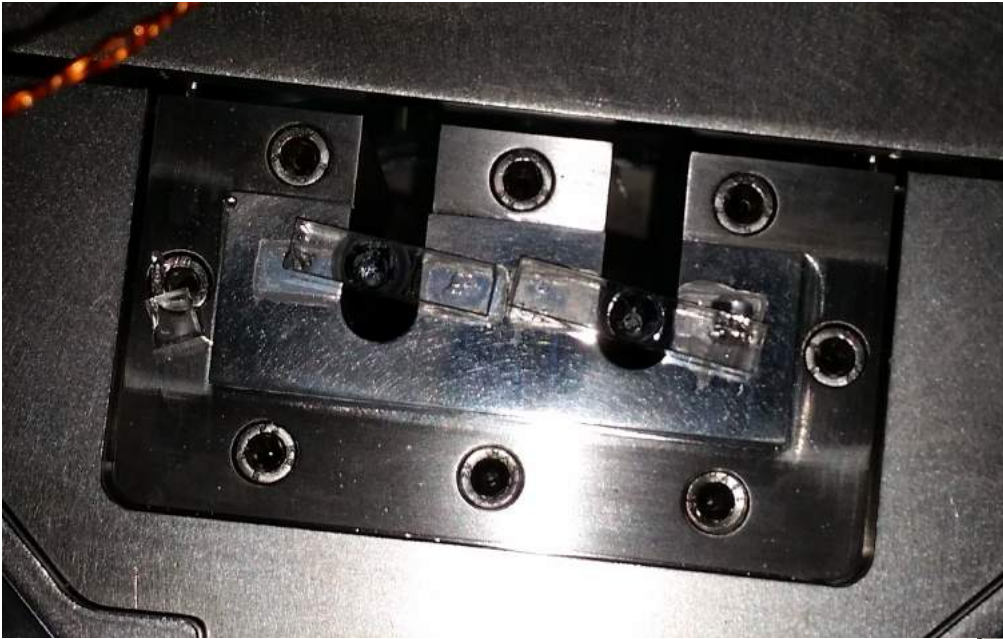
2



3

4

NI - Marionetta view after the crash



1

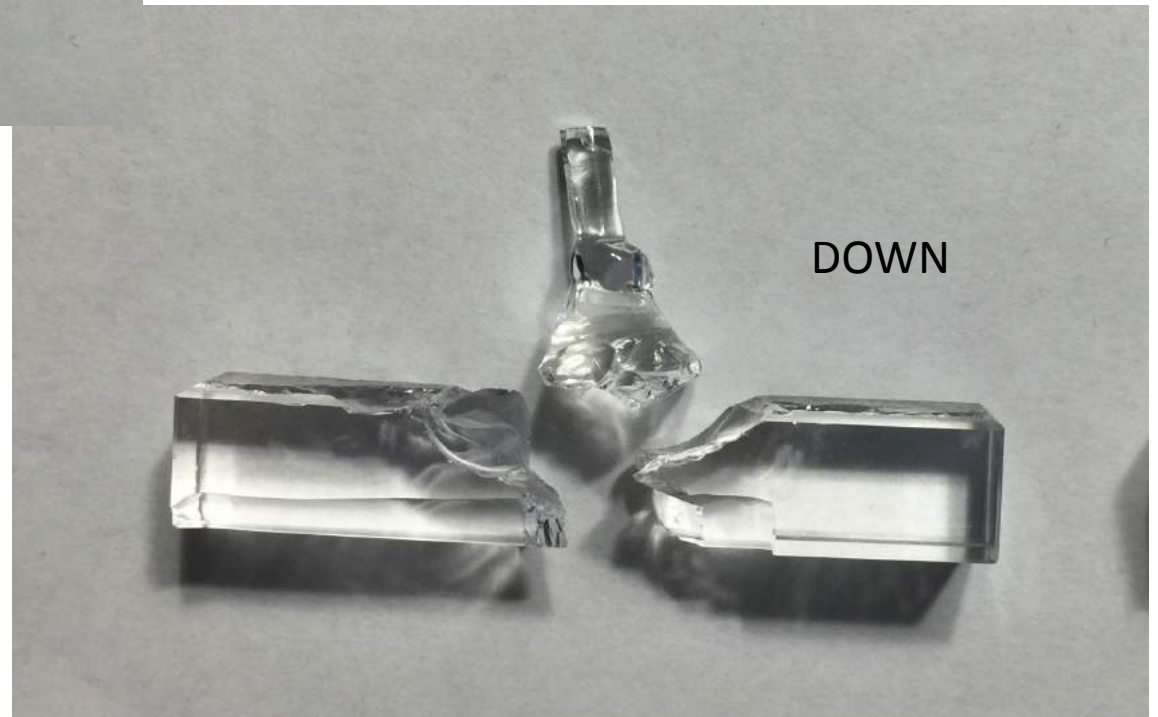
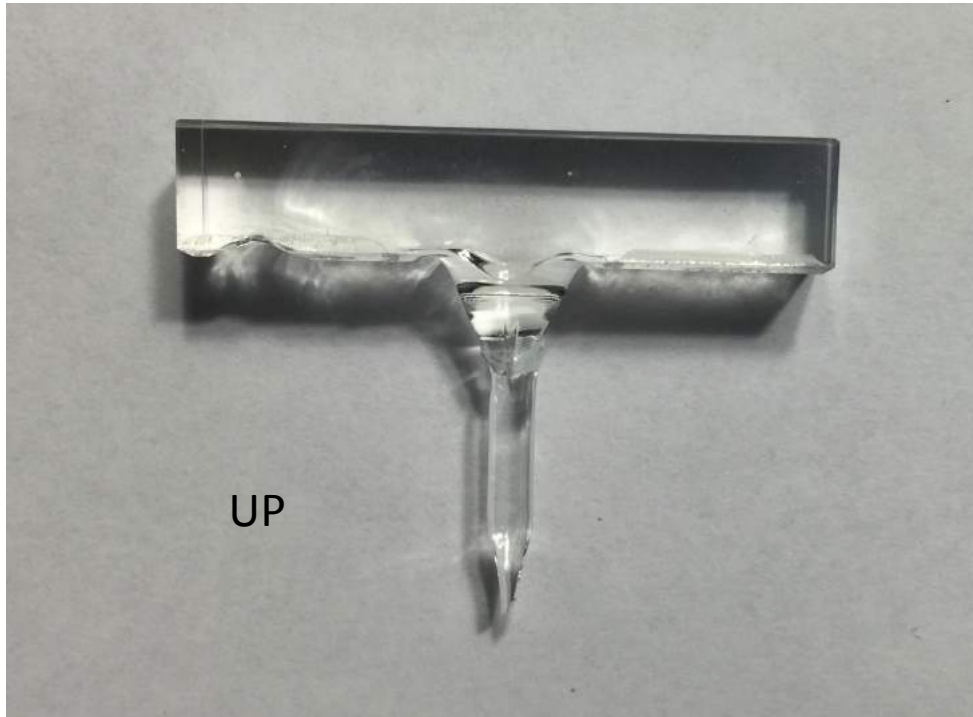
2



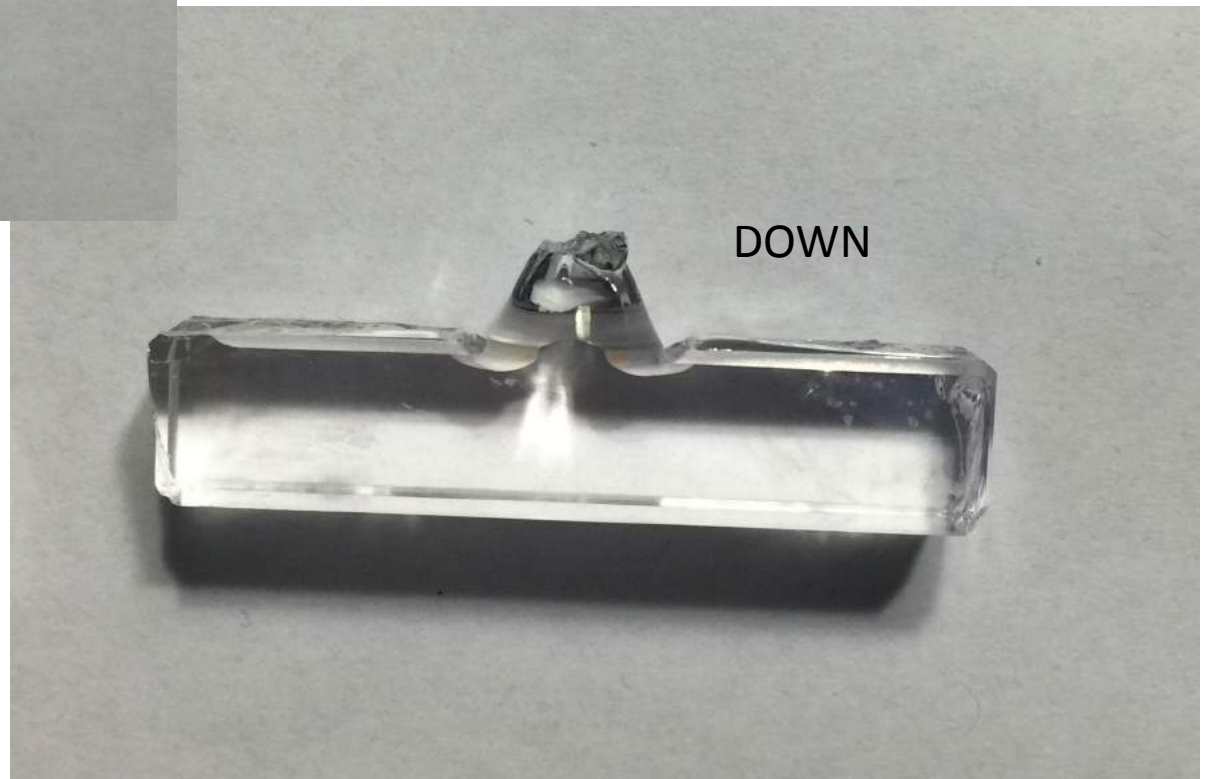
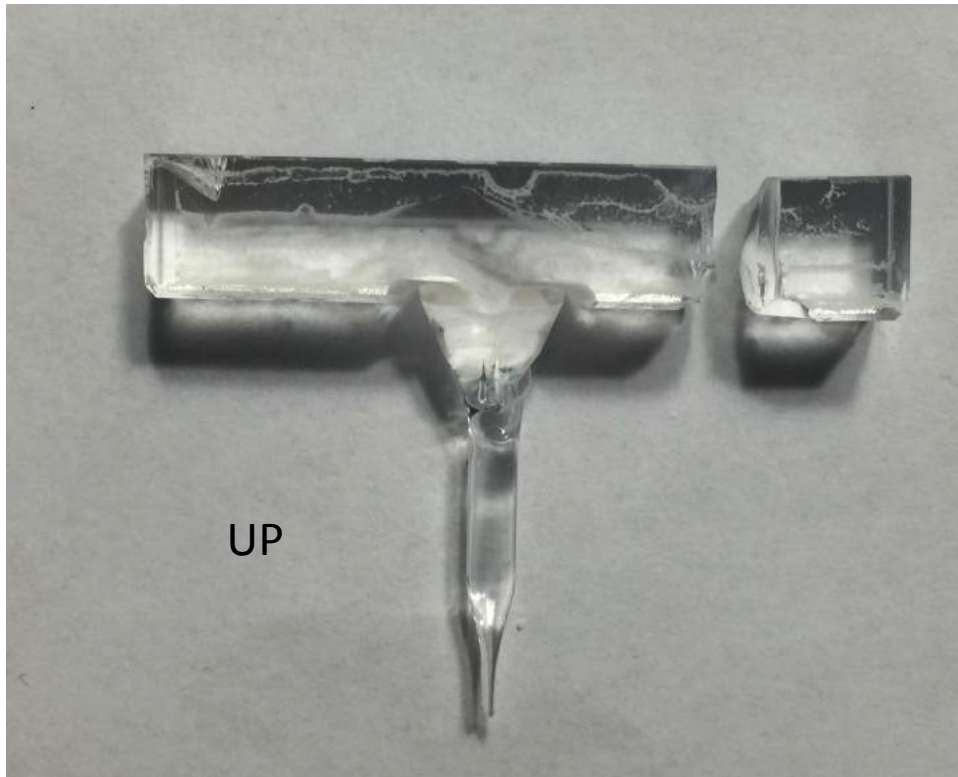
3

4

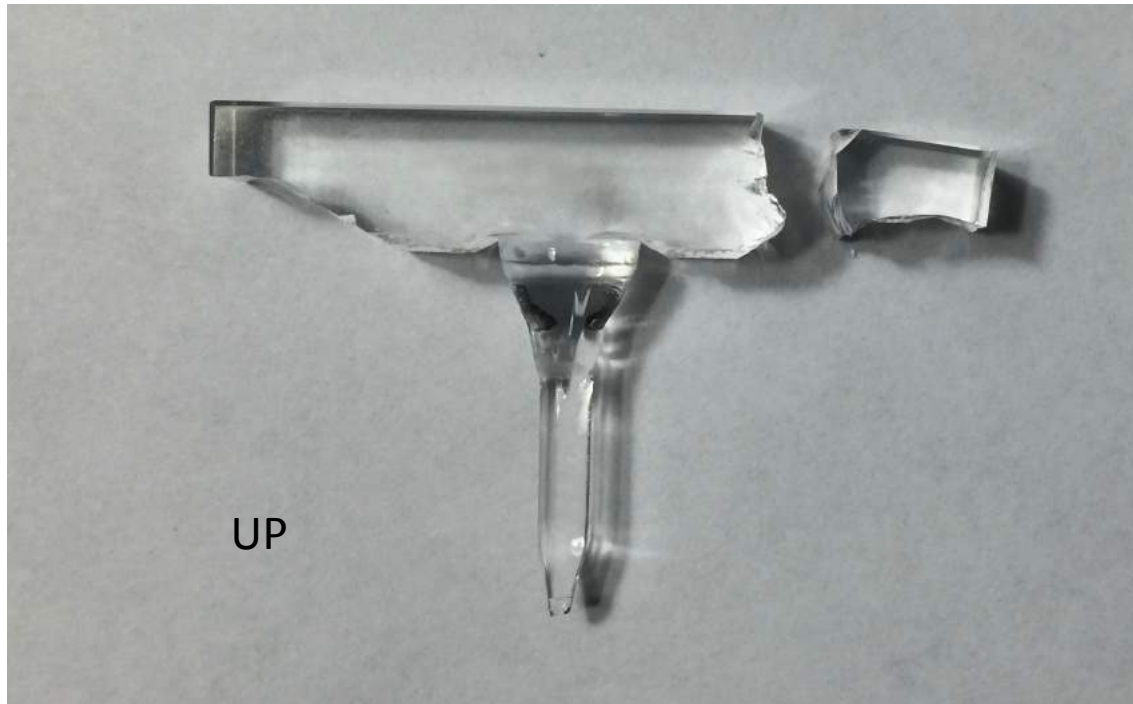
NI - Anchors n°1



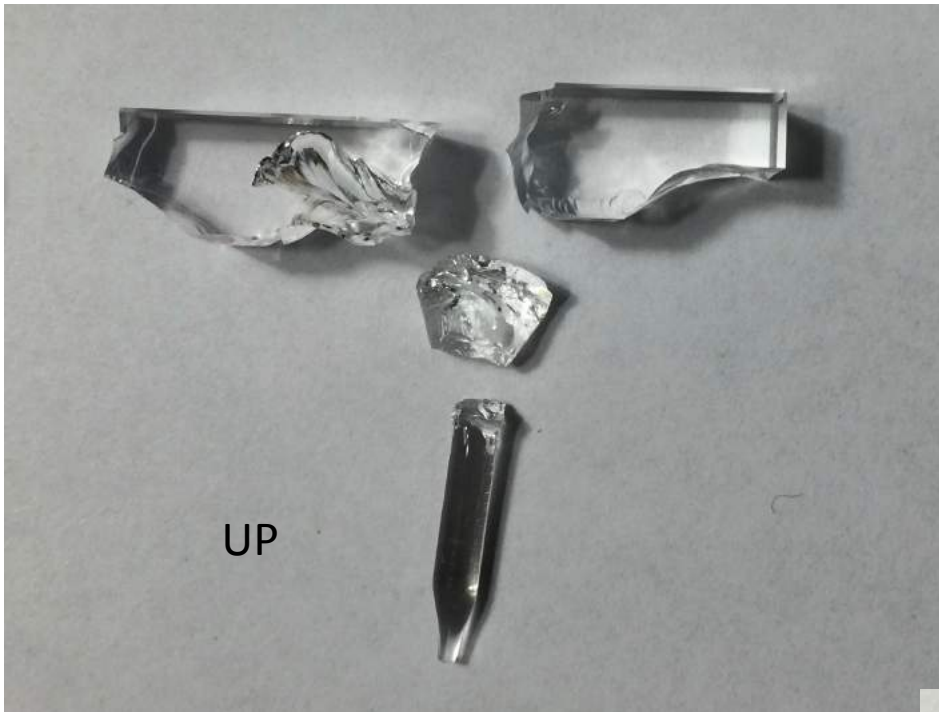
NI - Anchors n°2



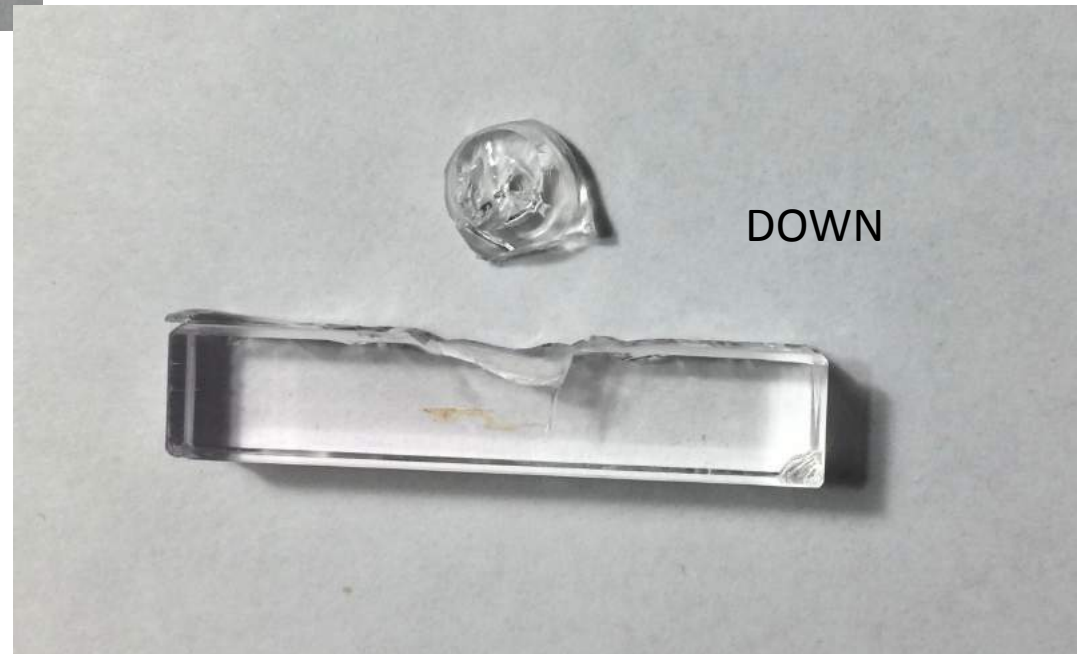
NI - Anchors n°3



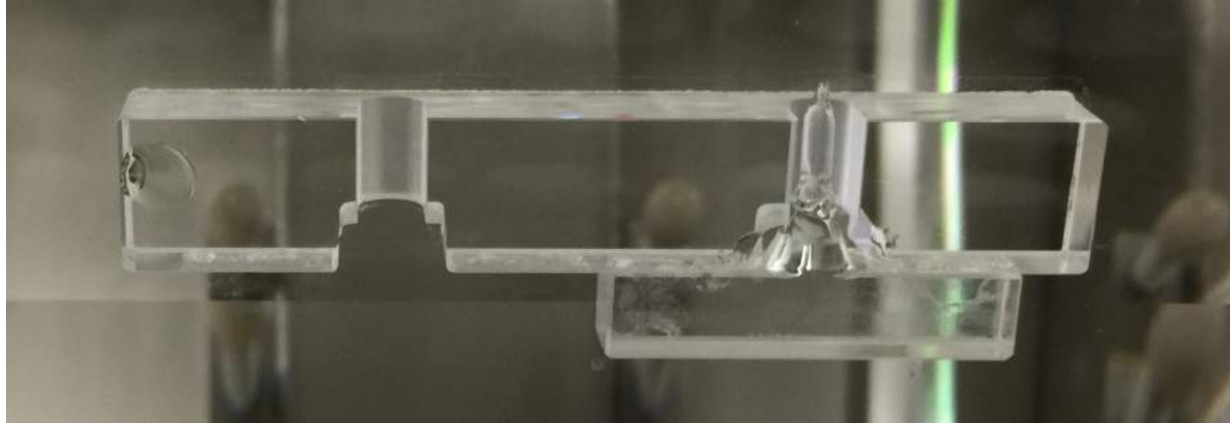
NI - Anchors n°4



According to the data the crash begun from this fiber: it seems to be started from the lower cone that appears to be opened by a traction from the top, while the upper anchor crash has been caused by a pressure from the bottom to the top as a reaction.

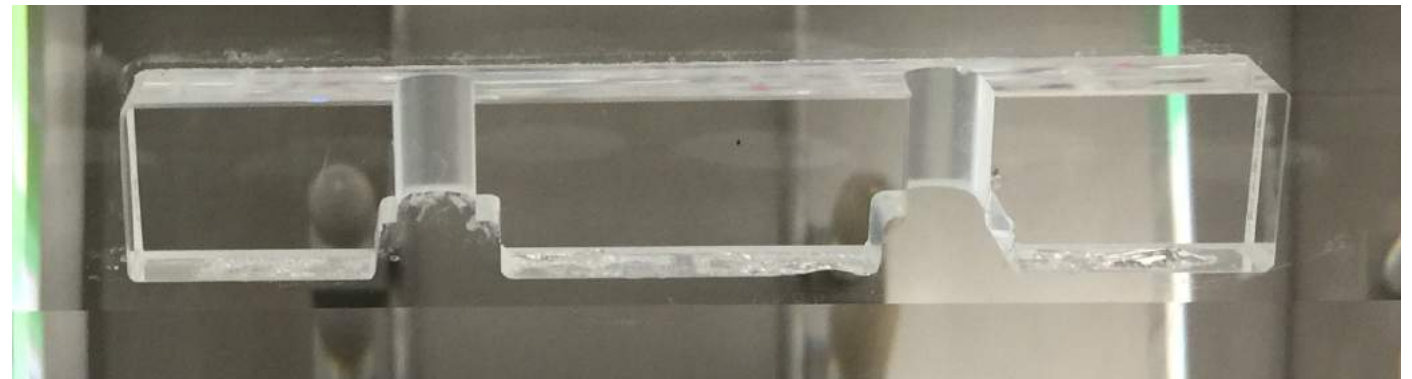


2° NI - Ears view after the crash



1

2



3

4

2° NI - Marionetta view after the crash

2

1

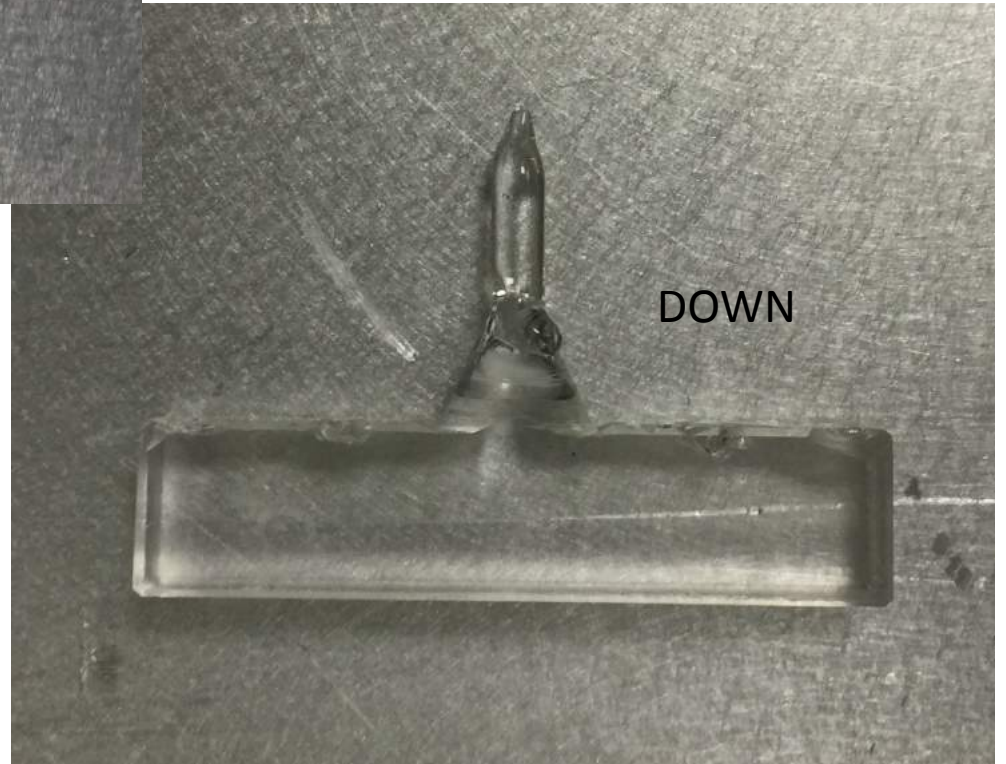
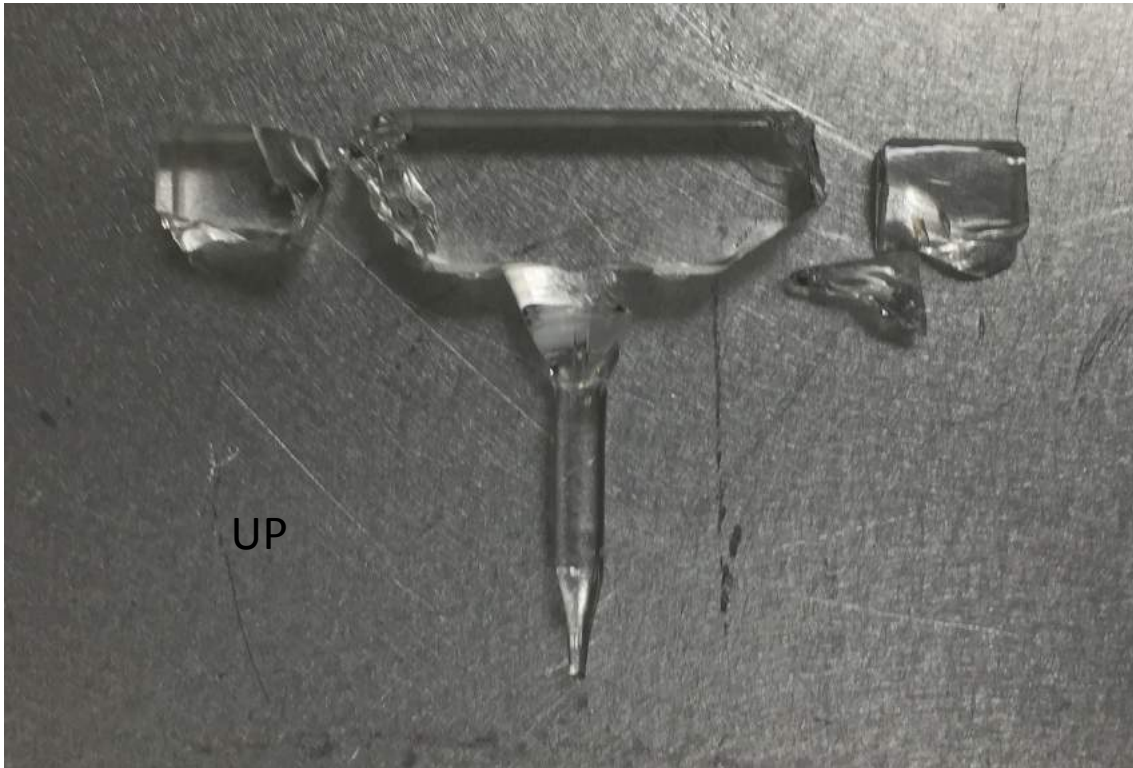


4

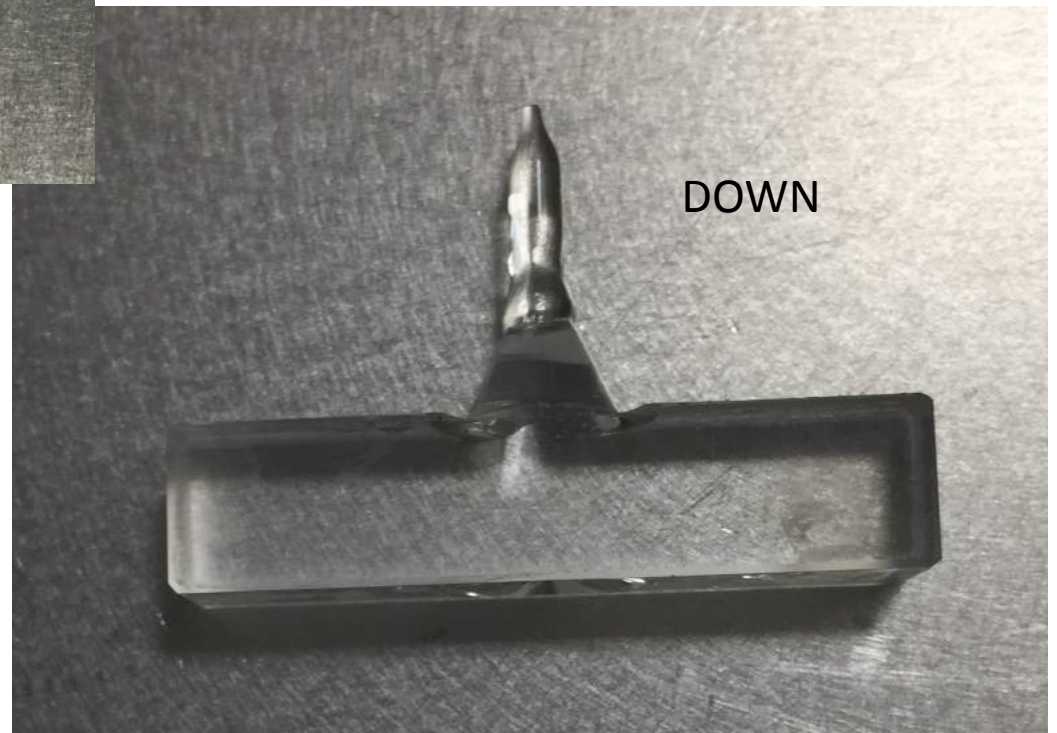
3



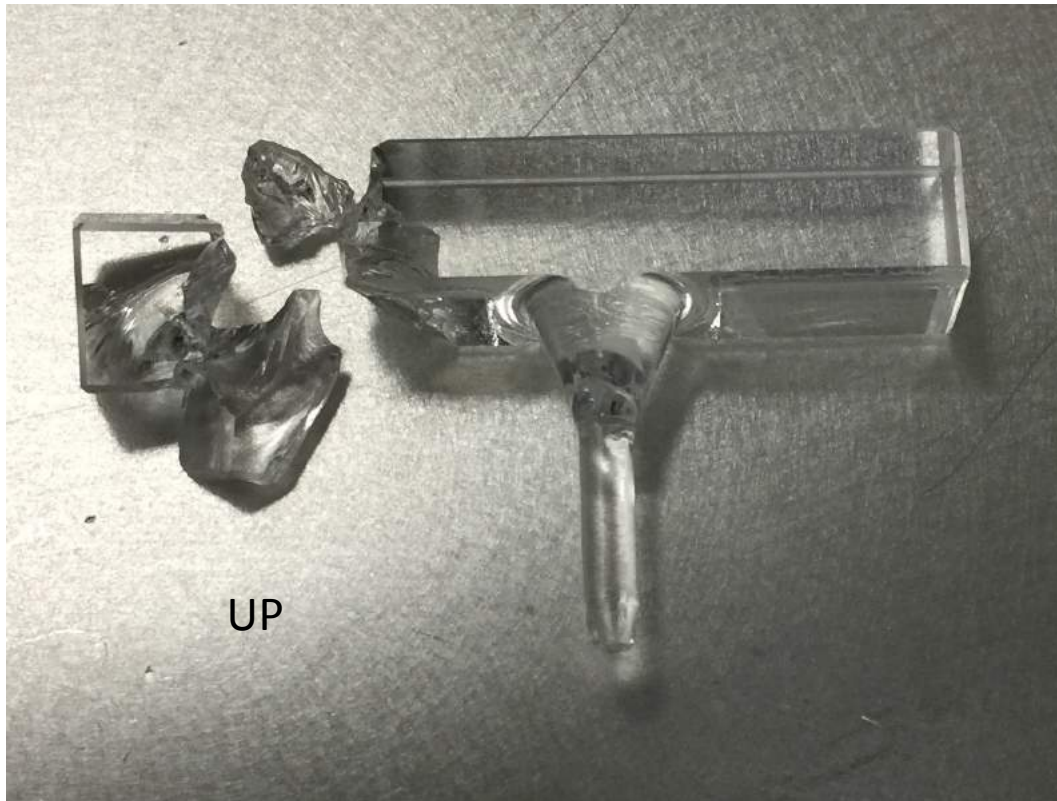
2° NI - Anchors n°1



2° NI - Anchors n°2

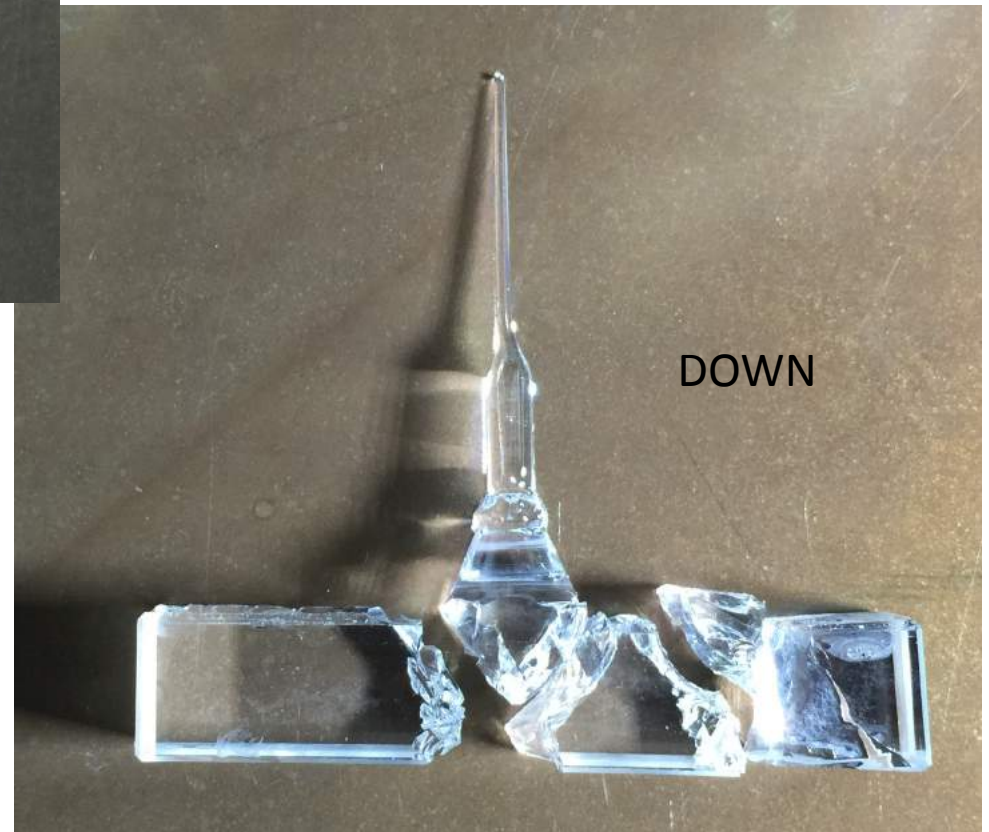


2° NI - Anchors n°3



According to the position of the mirror after the crash, the break of the FS suspension begun from this fiber: the two anchor crashes have been caused by a compression force so from a release of energy started from the fiber.

In this suspension the anchors performed as expected.



2° NI - Anchors n°4

