



Advanced Virgo dataDisplay

Users Manual

D. Verkindt

VIR-0047B-21

<https://tds.ego-gw.it/ql/?c=16295>

version 2

30 April 2021

Change Record

Version	Date	Section Affected	Reason / Remarks
v1	19/11/2019	All	First version
v1	03/12/2019	Appendix A	Added text of video tutorials
v1	24/04/2020	All	Additional features+Appendix
v1	23/06/2020	All	Added ref plots and options
v1	20/11/2020	All	Added options + final modifs
v2	03/05/2021	All	Update pictures and text. Added Useful tools section

Table of Contents

1	Introduction.....	5
2	Input parameters and Configuration.....	6
3	Main panel.....	7
4	Inputs : sources of data	9
5	Main browser: Channels and Plots.....	10
5.1	Channels management.....	10
5.2	Plots generation	11
5.3	Plots management	12
5.4	TIME plot	14
5.5	BRMSTIME plot.....	14
5.6	FFT plot.....	15
5.7	FFTTIME plot.....	16
5.8	TRFCT plot.....	18
5.9	TRFCTTIME plot	19
5.10	COHE plot	21
5.11	COHETIME plot	22
5.12	1D-DISTRIB plot	23
5.13	1DTIME plot.....	24
5.14	2D-DISTRIB plot	25
5.15	RAW-IMAGE plot	26
5.16	RAWTIME plot	27
5.17	AUDIO plot.....	28
6	Reference Plots.....	29
7	Tools and Options.....	30
7.1	The Options panel	30
7.2	The Sliders panel	32
7.3	The debug panel.....	33
8	Plots Root menus.....	34
8.1	The plot's line menu	34
8.2	The X axis and Y axis menu	35
9	Useful Additional Tools	36
9.1	rawframe.C.....	36
9.2	rawview.C.....	36
9.3	sound2frame	37

10	Bibliography.....	38
11	Appendix A : Video tutorials.....	38
11.1	Video 1: Starting dataDisplay	38
11.2	Video 2: Inputs.....	38
11.3	Video 3: Mainbrowser : Channels management.....	39
11.4	Video 4: Mainbrowser: Combine channels	39
11.5	Video 5: Mainbrowser: Plots management.....	39
11.6	Video 6: Edit Plot TIME.....	40
11.7	Video 7: Edit Plot FFT.....	41
11.8	Video 8: Edit Plot TRFCT	41
11.9	Video 9: Edit Plot FFTIME	41
11.10	Video 10: Start/Stop/Pause and mainpanel infos.....	41
11.11	Video 11: Ref Plots management.....	41
11.12	Video 12 : Options.....	42
11.13	Video 13 : Help and help ballons.....	42
12	Appendix B : dataDisplay Configuration.....	43
13	Appendix C : Associated tools	45
14	Appendix D : Needed libraries.....	46

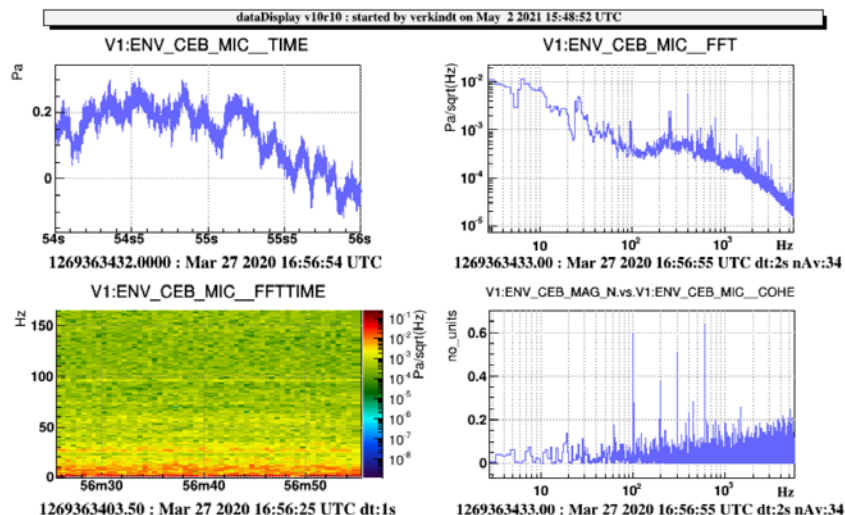
1 Introduction

This document describes the last version (v10r10) of the dataDisplay tool that is devoted to the access, the management and the display of the frame formatted data of gravitational waves detectors like Virgo or LIGO.

The dataDisplay can read those frame formatted data online or offline and can display various types of plots that help to monitor the interferometer, to investigate noise features or to check the various interferometer's signals or environment's signals provided by the data acquisition system.

A Graphical User Interface, based on the Xforms library, provides the main panels that allow to manage the data access, the channels selection or the plots settings.

Plots generation and manipulation, based on the ROOT library, have specific features that allow to do operations on several plots at the same time, to superpose additional plots or to extract data from a plot down to an ascii file.



Example of dataDisplay plots

All the parameters defining the data access, the channels selection and the plots features are saved in a configuration file, whose description is done in section 2.

The main panel features are described in section 3.

The main browsers for channels and plots management are described in section 4.

The Edition panels to set the plots parameters are described in section 5.

Section 6 describes how to superpose reference plots on the plots currently displayed.

Section 7 describes the various options, debugging features and checks that can be set from the main panel "Tools" button.

Section 8 describes the features and menus available through a right-click on the plots or on their axis.

Section 9 is a documentation about additional useful tools provided in the dataDisplay package.

Appendix A contains the texts for the video training of the dataDisplay.

Appendix B contains the description of the keywords used in a dataDisplay configuration file.

Appendix C is a short description of some tools associated to the dataDisplay

Appendix D is the list of libraries used by the dataDisplay package and some information about where to download the dataDisplay package and the needed libraries.

2 Input parameters and Configuration

Each time you push on the Start button of the main panel of the dataDisplay, a configuration file dy.cfg is created, that contains all the parameters defining the data access, the channels selection and the plots chosen.

To start a dataDisplay directly with this configuration, you can then just type “dataDisplay dy.cfg”. All the keywords of a typical configuration dy.cfg are described in Appendix B.

In addition to the name of a configuration file, you can provide various input command line parameters. You can get the description of those parameters by typing “dataDisplay -h” and you will get the following description:

Usage: dataDisplay [config] -f [start GPS] -l [duration] -o [filename] -t [title] -nocm -b -q -h

[config]	(default=NULL)	= name of configuration file
-f [start GPS]	(default=now)	= start GPS time
-l [duration]	(default=infinite)	= number of seconds of data to read
-b		= dataDisplay run in background
-q		= quit when dataDisplay stops
-o [filename]	(default=config)	= output picture (.jpg, .png, .gif, .eps, or .root files)
-t [title]	(default=user/date)	= title chosen for the plots canvas
-name [dynamy]	(default=dy)	= name of the dataDisplay (used in the ROOT canvas and Cm name)
-noplots		= plots not displayed but a dd.root file produced
-nocm		= no use of Cm connection
-debug [level]	(default=0)	= debug level

Examples of dataDisplay command line:

dataDisplay dy.cfg -f 1240002011 -l 20 -b -q -o myplots.png

This will take the configuration dy.cfg but will use a new start time 1240002011 and a new duration of 20 seconds. It will run in background mode (no plot shown) and will quit once all data have been read. The produced plots are in a ROOT canvas saved as png picture.

dataDisplay dy.cfg -b -q -noplots

This will take the configuration dy.cfg, run in background mode (no plot shown) and will quit as soon as all data have been read. No plot is visible but a file dy.root is output and contains the plots.

dataDisplay -nocm

The dataDisplay is started without using the Cm library. Then, online connection to a frames provider is not possible, only input data from files or shared memory is possible. This is an old option that allows to use the dataDisplay even if it was compiled without Cm.

datadisplay myconfig.cfg -t “plots of myconfig”

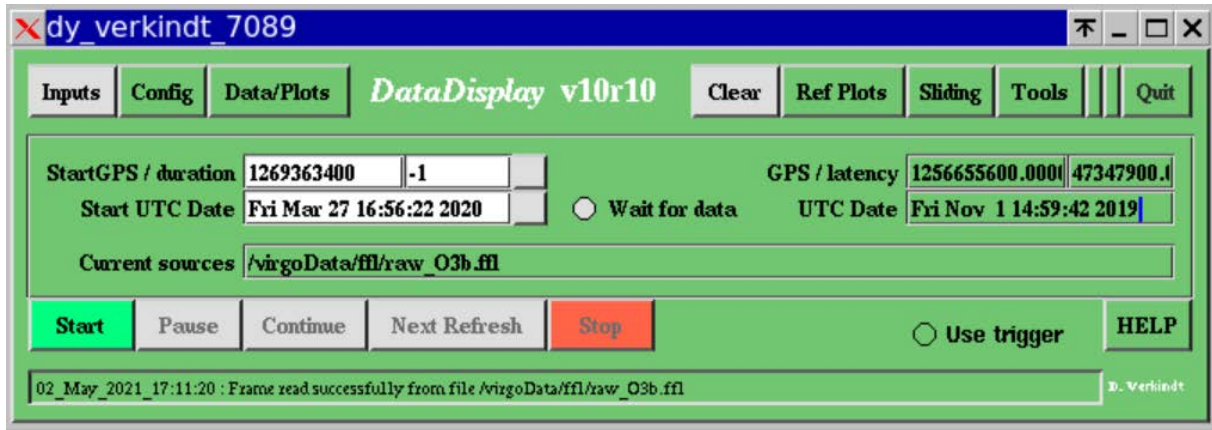
This will take the config myconfig.cfg but replacing the default upper title of the ROOT Canvas by the string “plots of myconfig”.

dataDisplay -name “mydatadisplay”

The dataDisplay is started with a new Cm name “mydatadisplay” which will be also the upper title of the ROOT Canvas.

3 Main panel

The main panel is the GUI panel that appears when you start the dataDisplay. It contains several buttons, menu buttons or input fields that you can use to access to the various features of the dataDisplay or to configure the way input data will be read.



Inputs: this menu button gives access to the list of possible sources from which the dataDisplay can read input data. It is fully describes in section 4.

Config: this menu button allows you to load or save a dataDisplay's configuration file

Data/Plots: this button opens the main browser panel that allows to select the input data channels and to edit the plots you made with them. This panel is fully described in section 5.

Clear: this button delete the ROOT canvas that contains the plots. This allows you to reset the various zooms or changes you made on the plots interactively.

Ref Plots: this menu button allows you to set, load, save or edit the current plots as reference plots that will be superposed persistently on the plots, the next time you click on Start. The reference plots are fully described in section 6.

Tools: this menu buttons gives access to various options or checks. The items of this menu are fully described in section 7.

Quit: this button stops the dataDisplay, after confirmation.

Start GPS: the GPS time of the first input data to read

Duration: number of seconds of data to read

Start UTC Date: the UTC date and time of the first input data to read. You can give any format among the following ones: Wed Sep 18 14:19:41 2019 , Sep 18 14:19:41 2019 , Sep 18 2019 14:19:41 , 2019/09/18 14:19:41 , 2019-09-18 14:19:41

GPS: GPS time of the current data read

Latency: number of seconds between the current GPS time and the GPS time of the current data read

UTC Date: UTC date and time of the current data read

Wait for data: if this button is ON, the dataDisplay waits for next data once it has reached the end of the input data file. This allows to read a file which is regularly updated.

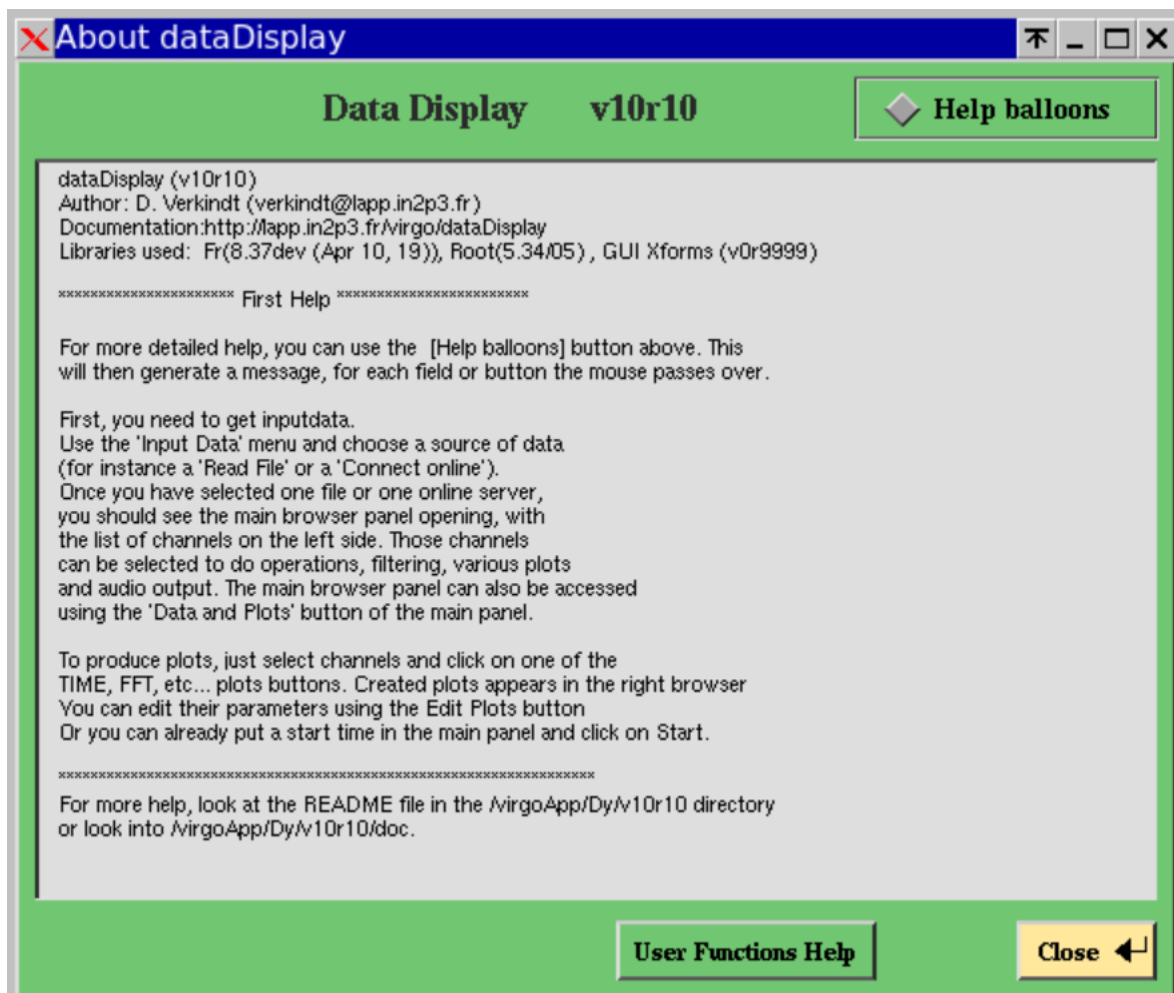
Current sources: show the list of the input sources from which input data are currently read

Start / Pause / Continue / Next Refresh / Stop : buttons to start, pause, continue and stop the reading of the input data. The “Next Refresh” button is like “Continue” but with an automatic Pause once a plot has been updated with new data.

See Unlock: if this button is ON, the unlock time periods of the ITF will appear as yellow color boxes in the TIME plots and the 1D or FFT plots will not include the data of these unlock periods.

HELP: this button opens a panel providing first help about how to use the dataDisplay.

Info Line: Show the last information available about the dataDisplay actions. Clicking on this line opens a log containing all the log messages that appeared in this “Info line” since the start of the dataDisplay.



The Help panel of the dataDisplay

4 Inputs : sources of data

The “Inputs” menu button of the main panel shows a menu with various possible sources of data. Among them, the most commonly used are the “Read FFL”, the “Read Files” and the “Connect Online” but you can try the other items in special cases like remote access to data stored on disk. Below is the full list of items of the “Inputs” menu:

Read FFL: this item opens a file browser panel showing by default the list of ffl files (*.ffl) available in /virgoData/ffl directory. ffl files are lists of frame files, specific to Virgo and LIGO frame format, which allow to access to a large set of files as if accessing to a single file.

Read Files: this item opens the file browser panel showing by default the list of frame files (*.gwf) available in the local directory. You can change the directory either by using a “single click” navigation within the files list or by typing the directory path in the directory input field. Then, select all the files you want to read and click on OK. You can also type directly the path/name of the file in the filename input field and click on OK.

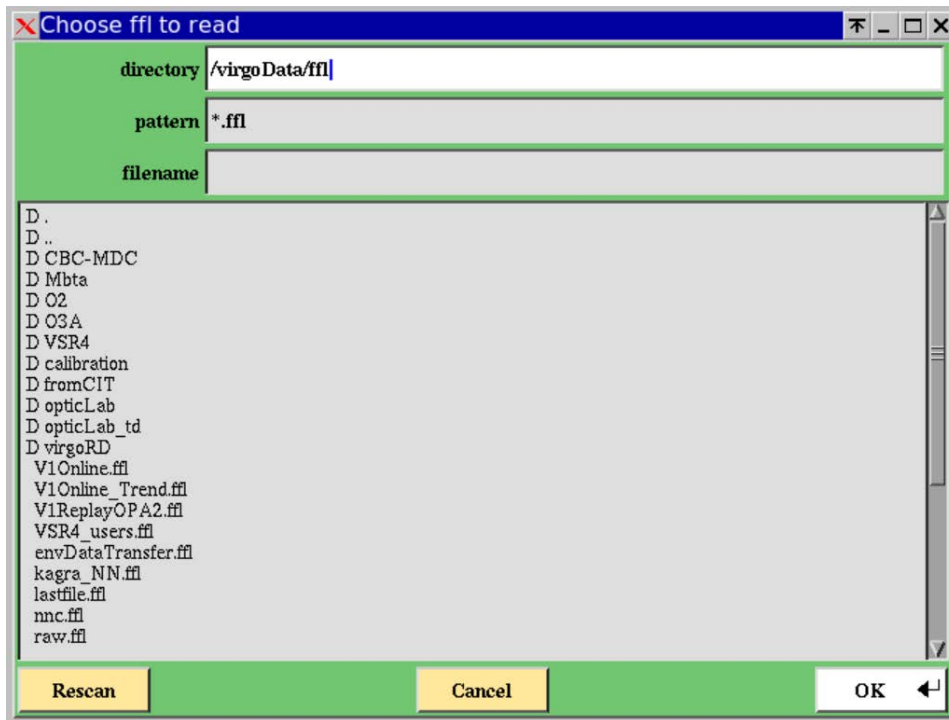
Connect Online: this item opens a panel showing the data providers available in the Cm Domain chosen (default is “Cascina”). Once you have selected one data provider, click on OK. This action sends a request to the data provider which sends back a list of channels available online. When you will later click on the Start button, the data provider will send only the channels needed for the plots. This type of data retrieval use Cm, which is a Virgo specific library allowing to exchange data easily between two servers of the DAQ or between a dataDisplay and a data provider connected at any point of the data collection architecture.

Connect to dataSender: this item opens a panel allowing to choose one of the dataSenders available in the current Cm domain. A dataSender is similar to the data providers previously described but it sends data read from files instead of sending data online. Each dataSender receives a request for a full channels list as soon as you first connect to it. Then, it can be used by the dataDisplay to get data read from any files located on the remote disks.

Read Shared Memory: this item opens a panel allowing the dataDisplay to connect to a shared memory available on the same computer as the one where the dataDisplay was started. If this shared memory contains frame formatted data, it can be read by the dataDisplay.

Read Audio Wave File: this item opens the file browser. If you select a .wav audio file, its data will be frame formatted and a corresponding channel will be created. You can then select it to do the various plots.

Read Ascii File: this item opens the file browser. If you select a .txt file in ASCII or CSV format, its data will be frame formatted and a corresponding channel will be created. You can then select it to do the various plots.



The input file browser panel

5 Main browser: Channels and Plots

This panel opens when you click on the “Channels/Plots” button of the main panel. It is the central node of the dataDisplay where you can select channels in the channels browser, choose the type of plot you want for those channels and edit the plots you created. The various browsers, buttons and input fields of this panel are described in the subsections below.

5.1 Channels management

Channel browser: once you have selected one or several inputs, the channel browser shows all the data channels available. Each line shows the name of the channel, the sampling frequency of the channel and the input source of the channel.

Sort by name, Sort by frequency, Sort by input file: allow to sort the channels of the channels browser, according to the name of the channel or to the sampling frequency of the channel or to the source of the channel.

Update: this button updates the channel list by looking at the channels available at the GPS time provided in the input field near to the button.

Deselect all: this button deselect all the channels in the list

Remove channel: this button removes from the list any selected channel, which was created by the user.

Remove all ch. of a file: Remove from the channels list all the channels, which have the same source as the selected channels.

Filter: this field allows you to apply a filter in the list of channels and to put at the top of the list the filtered channels as soon as you type “Enter” key on your keyboard. Examples: If you put “ENV_*”, all the channels whose name starts with ENV_ will be put at the top of the list. If you put “*MC*temp”, all the channels whose name contains MC and finish with temp will be put at the top of the list.

Search: it allows to find in the channels list the first channel that fulfil the request. Example: typing ENV will show you the channel ENV_BS_ACC_Z. If you continue to type, for instance ENV_CE, you will get ENV_CEB_DUST_OP3UM which is the first channel whose name starts with ENV_CE.

Combine Channels: this button takes all the selected channels and show a sum of them in the “Create new channel” field. You can then modify this operation using the usual +,-,x,/ operators and parenthesis but also using any mathematical function compliant with standard C math library. You can also remove some of the channels or add channel names you know.

Create new channel: This button takes the formula you have put for the combination of channels and create a new channel. If your formula starts with “mychannel = ...”, the new channel will appear in the channels list as “zz_mychannel”. At any time, you can use it to do a plot or remove it from the channels list with the button “Remove Channel”.

Then, each time you will select a created channel, you will see appearing in the “Channel Combination” field the formula that defines it. Be aware that, as soon as you change the formula, this change is taken into account even if you have not used again the button “Create a new channel” and is applied to the plots already made with the newly created channel. See video tutorial for more explanation.

Create New Trigger: this button creates a new trigger on the basis of the formula provided in the corresponding input field. Example: if you put in this field “ENV_CEB_MIC < 0.05 and ENV_CEB_MAG_N > 0.01” (requesting acoustic channel to be below a threshold of 0.05 and magnetic channel to be above 0.01), you will then see yellow boxes in the TIME plots for any time period where the formula is not verified and you will see FFT plots computed only over the time periods where the formula is verified.

CH. INFO: this button provides a short description of each channel selected. This description is available in a dedicated panel, in the log file (Info line at the bottom of the main panel) and in the xterm window where the dataDisplay was started.

5.2 Plots generation

TIME: clicking on this button creates a TIME plot for each channel selected in the channels list. Such plot shows versus UTC time the data samples of the channel.

BRMSTIME: clicking on this button creates a BRMSTIME plot for each channel selected in the channels list. Such plot shows versus UTC time the rms of the channel computed in a given frequency band. This computation uses the FFT of the signal and depends on the frequency resolution of this FFT.

FFT: clicking on this button creates a FFT plot for each channel selected in the channels list. Such plot shows the module of the Fourier Transform of the channel (amplitude spectral density of the noise in this channel).

FFTTIME: clicking on this button creates a FFTTIME plot for each channel selected in the channels list. Such plot shows versus UTC time the module of the Fourier Transform of the channel. This is time-frequency plot or a spectrogram, very helpful to view in a single eyes-shot the time and frequency

characteristics of a signal. It has some constraints that are described in more details in section about edition of plot parameters.

COHE: clicking on this button creates a COHE plot for each couple of channels selected in the channels list. Such plot shows versus frequency the coherence between two channels. The coherence is defined as the cross-correlation of the two channels divided by the square of the auto-correlation of each channel.

If the channels have different sampling frequencies, the channel with the highest sampling frequency is downsampled to reach the lowest sampling frequency.

COHETIME: clicking on this button creates a COHETIME plot for each couple of channels selected in the channels list. Such plot shows versus UTC time the time evolution of the coherence between two channels.

TRFCT: clicking on this button creates a TRFCT plot for each couple of channels selected in the channels list. Such plot shows versus frequency the module and phase of the transfer function between two channels. The transfer function is defined as ratio between the FFT of each channel.

If the channels have different sampling frequencies, the channel with the highest sampling frequency is downsampled to reach the lowest sampling frequency.

TRFCTTIME: clicking on this button creates a TRFCTTIME plot for each couple of channels selected in the channels list. Such plot shows versus UTC time the time evolution of the module of the transfer function between two channels.

1D-DISTRIB: clicking on this button creates a 1D plot for each channel selected in the channels list. Such plot shows the distribution of the sample values of the channel. By default, the plot shows also basic statistics like the mean and the rms values.

1DTIME: clicking on this button creates a 1DTIME plot for each channel selected in the channels list. Such plot shows versus UTC time the time evolution of the distribution of the sample values of the channel.

2D-DISTRIB: clicking on this button creates a 2D plot for each couple of channels selected in the channels list. Such plot shows the sample values of one channel versus the sample values of the other channel.

If the channels have different sampling frequencies, the channel with the lowest sampling frequency is oversampled to reach the highest sampling frequency.

AUDIO: clicking on this button creates a fictive plot which is in fact a time segment of the data of the channel which will be recorded in an audio file or that you can hear online as soon as you have clicked on the "Start" button of the main panel.

5.3 Plots management

Each time you use one of the buttons above, you create one plot for each channel selected. Those plots are listed in the plots browser. Clicking on several of the plots will select them. You can then use the buttons on the right to the plots browser to do some action on the selected plots:

Plots pattern: define the configuration of the ROOT Canvas that will show the plots. If you then type 2x3 in the input field that appears, it will force the plots to appear in a set of pads of 2 columns by 3 rows, except if there are more than 6 plots to display. In this case the automatic pattern will be applied.

Save Plots: this button save the ROOT canvas and all the plots it contains in a file (default is dy.root) which can be a ROOT file or a jpg or png or gif file.

Deselect all: this button deselect all the plots which were selected

Clear: this button removes all the plots from the browser. Take care, no undo is possible and no confirmation is asked.

Remove Plot: this button removes from the browser all the plots currently selected.

Edit Plots: this button opens an edition panel associated to the type (TIME, FFT, 1D, etc...) of the last plot selected. All the changes done in this edit panel will apply to all the selected plots of the same type as the last plot selected.

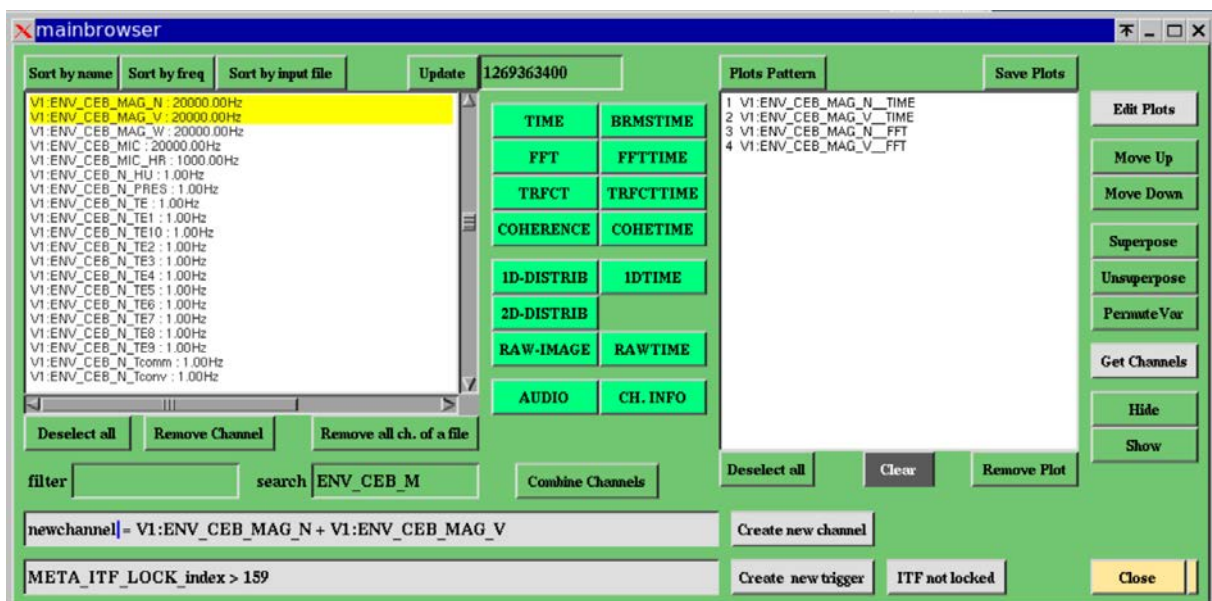
Move Up / Move Down : allows to move up or down the selected plots in the plots list

Superpose / Unsuperpose : this button will mark as superposed all the selected plots of the same type. Superposed plots will then appear in the same ROOT canvas pad. For instance, if you have selected two TIME plots and two FFT plots, whatever their position in the plots list, it will superpose the two TIME plots in a pad and the two FFT plots in an other pad.

PermuteVar: this button allows to permute the channels in a TRFCT, COHE or 2D plot. This is useful mainly because when a TRFCT plot is created it takes the selected channels in the order provided by the channels browser, an order not fully under user control.

GetChannels: clicking on this button gets all the channels used in the selected plots and make them selected in the channels browser. This is useful especially when you have a set of plots of a given type (for instance TIME) and you want, for the same channels, a set of plots of an other type (for instance FFT).

Hide / Show : this button puts all the selected plots in a Hide state (or Show state). A plot in a Hide state is kept in the plots list but is not computed and not displayed when you later click on the “Start” button of the main panel.



The mainbrowser panel

Each time you click on the “Edit Plot” button, an edition panel is opened, specific to each plot’s type. Below is a description of each of those panels.

5.4 TIME plot

The edit panel of the TIME plot has the following input fields and buttons:

Time window: number of seconds of data displayed

Sampl. Freq. : sampling (or resampling) frequency of the data displayed

Minmax: if this flag is ON, what is displayed is only the min and max of the data resampled

Time Shift: percentage of time window. It is the size of data stretch read between each plot’s update

ymin / ymax: the min and max values of the data shown on the plot or the Y axis span.

y offset: the offset to add to the data before displaying them in the plot

y scaling factor: scale factor to apply before displaying the data in the plot. It applies before the offset.

Band-pass filter (fmin/fmax): frequency min and max of the band-pass filter applied to the data

Logx: put log scale on the x axis of the plot

Logy: put log scale in the y axis of the plot

Gridx: show vertical grid lines along the x axis

Gridy: show horizontal grid lines along the y axis

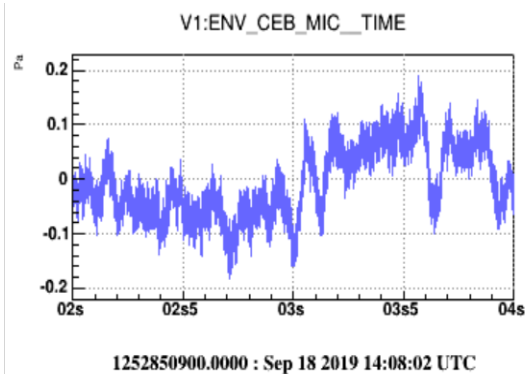
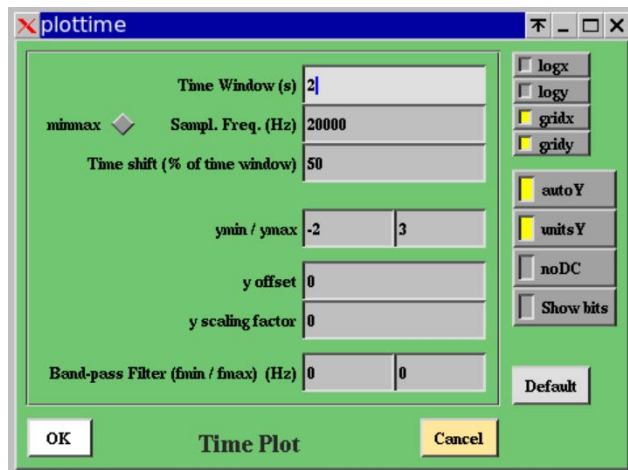
autoY: sets automatically the min and max on Y axis according to the current data displayed

unitsY: show on y axis calibrated data instead of raw ADC counts

noDC: subtract from the data the mean value computed over the data samples currently displayed

Show bits: show, for each data sample the value of its first 32 bits instead of the sample value itself

Default: sets default values for all the fields of the edition panel



5.5 BRMSTIME plot

The edit panel of the BRMSTIME plot has the following input fields and buttons:

Time window: number of seconds over which band rms values are computed and displayed

BRMS time window: number of seconds of data used to compute each FFT used to compute the BRMS.

This determines the frequency resolution of the FFTs used.

18/05/2021

14 of 46

Advanced Virgo dataDisplay

Page

VIR-0047B-21

Frequency resolution: width (in Hz) of each bin of the spectrum used to compute the band rms. This is the inverse of the size of the FFT time window.

Time resolution: width (in sec) of each bin on the X (time) axis. If the time resolution is 10 sec and if each FFT is computed over 1 sec (frequency resolution of 1 Hz), with an overlap of FFTs of 50%, then each bin on X axis will contain the average (or the median) over 20 FFTs. The time resolution is also the BRMS time serie sample rate.

Sampl. Freq. : sampling or resampling frequency of the input channel

Time Shift (% of FFT time window): shift (in sec) on input data between two consecutive FFTs

Refresh Period (% of time window): size of the data stretch read between two plot's updates

Freq band min/max: min and max of the frequency band over which the BRMS is computed

ymin / ymax : min and max BRMS values shown on the plot

Logx: put log scale on the x axis of the plot

Logy: put log scale in the y axis of the plot

Gridx: show vertical grid lines along the x axis

Gridy: show horizontal grid lines along the y axis

autoY: sets automatically the min and max on Y axis according to the current data displayed

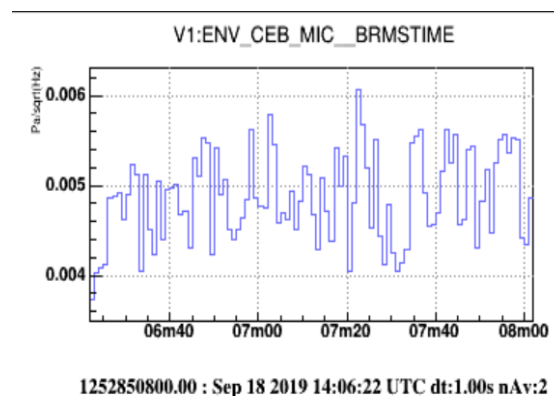
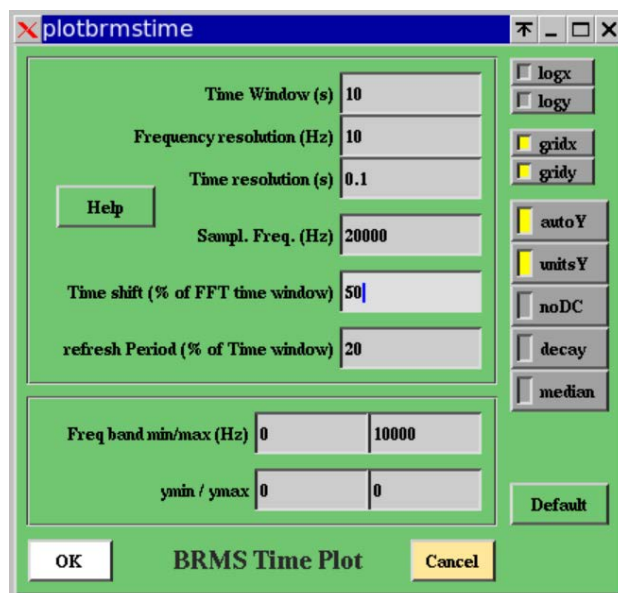
unitsY: show on y axis the BRMS computed with calibrated data instead of raw ADC counts

noDC: subtract from the input data the mean value computed over each FFT data samples

Decay : use a moving average when computing the averaged FFTs

Median : use a median FFT instead of an averaged FFT to compute the BRMS values

Default: put default values for all the parameters of the edit panel



5.6 FFT plot

The edit panel of the FFT plot has the following input fields and buttons:

Time window: number of seconds of data over which the Fast Fourier Transform is computed. Each data stretch in this time window is first multiplied by a tapering Hanning window.

Sampl. Freq. : sampling (or resampling) frequency of the data passed to the FFT. An anti-aliasing filter (low-pass Butterworth of order 16) is applied in case of resampling

Time Shift (% of time window): the overlap between two successive FFT time windows (usually 50%)

Number of FFTs to average: number of modules of the FFT (amplitude spectral density) to average
Refresh Period (in number of FFTs): number of FFT averaged between each plot refresh
Freqmin / freqmax: min and max frequency of the FFT frequency band displayed
ymin / ymax: the min and max of the FFT amplitude displayed or the Y axis span
Band-pass filter (fmin/fmax): Frequency min and max of the pass-band filter (a double Butterworth filter of order 16) applied to the data before computing the FFT.

Logx: put log scale on the x axis of the plot

Logy: put log scale in the y axis of the plot

Gridx: show vertical grid lines along the x axis

Gridy: show horizontal grid lines along the y axis

autoY: sets automatically the min and max on Y axis according to the current data displayed

unitsY: show on y axis calibrated data instead of raw ADC counts

noDC: subtract from the data the mean value computed over the data samples of the last FFT

dB: sets the Y axis in decibels units

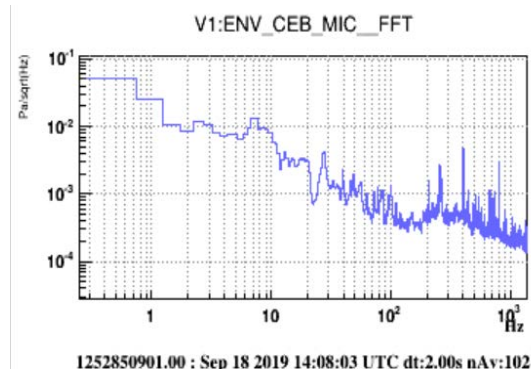
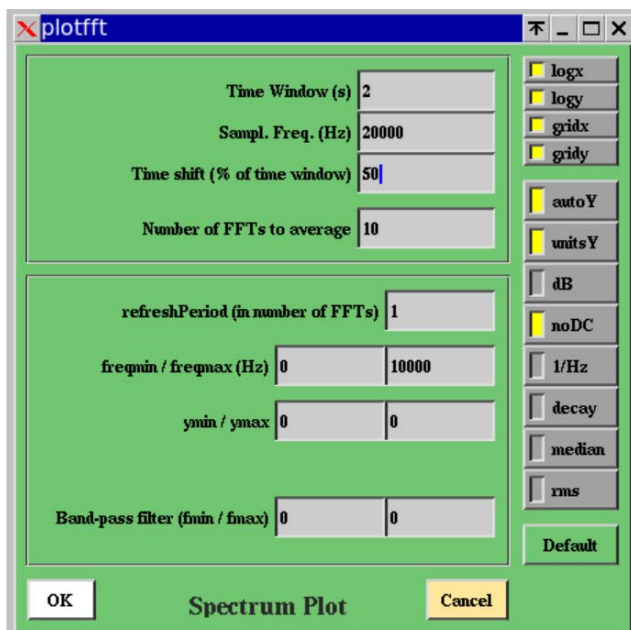
1/Hz: show the FFT module in 1/Hz units instead of 1/sqrt(Hz) units

Decay: the FFT displayed is a moving averaged FFT, with a depth set by the “Number of FFT to average”

Median: Compute a median FFT module instead of an averaged FFT module. Median is computed over N FFTs, where N is the “Number of FFT to average”. If decay is ON, median becomes a moving median.

Rms: The integrated rms computed over the FFT module is also displayed. It is computed from the Nyquist frequency down to 0 Hz. Value of this curve at 0 Hz is the rms of the signal.

Default: sets default values for all the fields of the edition panel



5.7 FFTTIME plot

The edit panel of the FFTTIME plot has the following input fields and buttons:

Time window for Time-Freq plot: number of seconds over which the time-frequency plot is done

Frequency resolution: width (in Hz) of each bin on the Y (frequency) axis

Time resolution: width (in sec) of each bin on the X (time) axis. If the time resolution is 10 sec and if each FFT is computed over 1 sec (frequency resolution of 1 Hz), with a FFT overlap of 50%, then each bin on X axis will contain the average (or the median) over 20 FFTs.

Sampl. Freq. : sampling or resampling frequency of the input signal of the plot

Time Shift (% of FFT time window): time shift in input data between two consecutive FFT computation. It is a percentage of the FFT time window. The size of the FFT time window is the inverse of the frequency resolution. If the time shift is 30%, it means that the overlap between two consecutive FFT time windows is 70%.

Refresh Period (% of time window): quantity of data read between two consecutive plot's update.

Zoom freq min/max: min and max of the frequency band shown on the Y axis (this does not prevent to make an unzoom once the plot is done and to see all the frequency band between 0 and the Nyquist frequency).

zmin / zmax (color scale): min and max values of the color scale which indicates the FFT module in the time-frequency plot. You can improve the contrast by reducing the span between zmin and zmax. If zmin >= zmax, then the option flag autoZ is automatically activated.

Help: this button opens a help panel that explains how is computed the time-frequency plot

Logx: put log scale on the x axis of the plot

Logy: put log scale in the y axis of the plot

Logz: put log scale on the z axis of the plot

Gridx: show vertical grid lines along the x axis

Gridy: show horizontal grid lines along the y axis

Gridz: show grid lines along the z axis when the plot is done with LEGO or SURF instead of COL option.

autoZ: sets automatically the min and max on z axis according to the current data displayed

unitsZ: show on the z axis calibrated data instead of raw ADC counts

noDC: for each computed FFT, subtract first from the data the mean value computed over the data samples used for this FFT

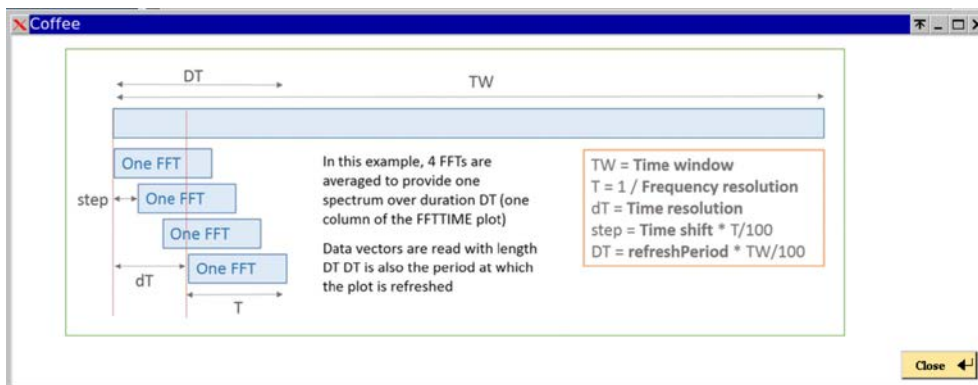
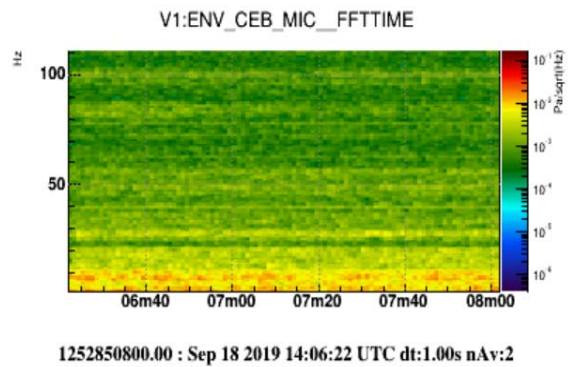
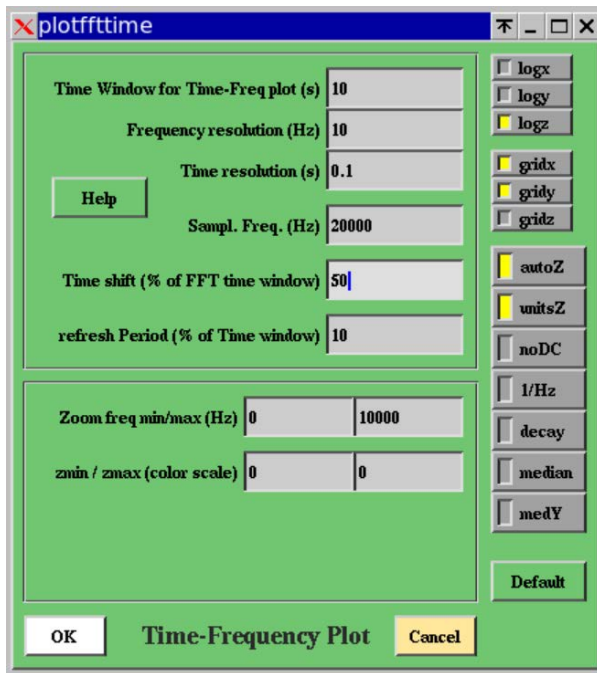
1/Hz: Put as FFT module the usual units instead of the 1/sqrt(Hz) units of a noise amplitude density.

Decay : use a moving average when computing the averaged FFTs.

Median : if this flag is ON, a median FFT is computed instead of an averaged FFT

medY : normalize each value at coordinated X,Y of the plot by the median value computed over all the values along a given Y coordinate. This allows to improve the visibility of any time variation of the signal FFT, like glitches.

Default: put the default values for each editable parameter.



Help panel of the FFTTIME plot

5.8 TRFCT plot

The edit panel of the TRFCT plot has the following input fields and buttons:

Time window: number of sec of data used to compute each transfer function

Channel 1 Sampl Freq : sampling or resampling frequency of the numerator channel

Channel 2 Sampl Freq: sampling or resampling frequency of the denominator channel

Time shift (% of time window): shift on the data read between each transfer function computation

Number of FFTs to average: number of transfer function computation to average

Refresh Period: number of transfer function computation between each plot's update

freqmin / freqmax: min and max of the frequency band displayed in the plot

yMin / yMax: min and max value of the transfer function module displayed

Band-pass filter (fmin/fmax): min and max frequencies of the pass-band filter applied on the two input channels before each transfer function computation

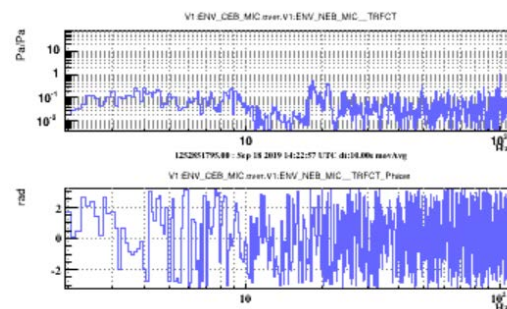
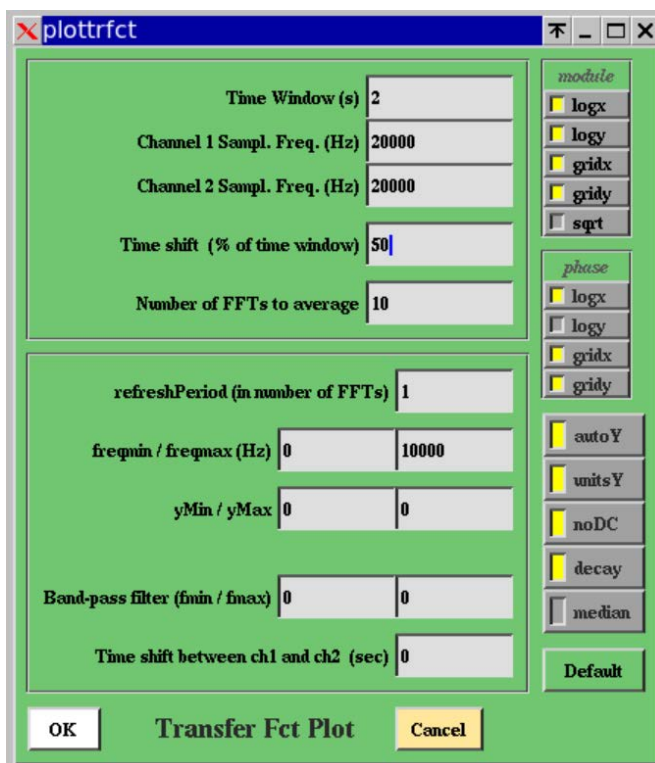
Time shift between ch1 and ch2: time shift (in seconds) applied between the two input channels before each transfer function computation

Logx: put log scale on the x axis of the plot of the transfer function module

Logy: put log scale in the y axis of the plot of the transfer function module
Gridx: show vertical grid lines along the x axis of the plot of the transfer function module
Gridy: show horizontal grid lines along the y axis of the plot of the transfer function module
Sqrt: use correlation instead of the square of the correlation in the definition of the transfer function

Logx: put log scale on the x axis of the plot of the transfer function phase
Logy: put log scale in the y axis of the plot of the transfer function phase
Gridx: show vertical grid lines along the x axis of the plot of the transfer function phase
Gridy: show horizontal grid lines along the y axis of the plot of the transfer function phase

autoY: sets automatically the min and max on Y axis according to the current data displayed
unitsY: show on y axis calibrated data instead of raw ADC counts
noDC: subtract from each input channel its mean value computed over the data samples used to compute the transfer function.
decay: use a running average (or median) when averaging the transfer functions
median: compute a median transfer function instead of an averaged transfer function
Default: put the default values for each parameter of the plot's edit panel



5.9 TRFCTTIME plot

The edit panel of the TRFCTTIME plot has the following input fields and buttons:

Time window for Time-Freq plot: number of seconds over which the time-frequency plot is shown
Frequency resolution: width (in Hz) of each bin on the Y (frequency) axis

Time resolution: width (in sec) of each bin on the X (time) axis. If the time resolution is 10 sec and if each FFT is computed over 1 sec (frequency resolution of 1 Hz), the each bin on X axis will contain the average (or the median) over 10 FFTs.

Channel 1 Sampl Freq : sampling or resampling frequency of the numerator channel

Channel 2 Sampl Freq: sampling or resampling frequency of the denominator channel

Time Shift (% of FFT time window): time shift in input data between two consecutive FFT computation. It is a percentage of the FFT time window. The size of the FFT time window is the inverse of the frequency resolution. If the time shift is 30%, it means that the overlap between two consecutive FFT time windows is 70%.

Refresh Period (% of time window): quantity of data read between two consecutive plot's update.

Zoom freq min/max: min and max of the frequency band shown on the Y axis (this does not prevent to make an unzoom once the plot is done and to see all the frequency band between 0 and the Nyquist frequency).

zmin / zmax (color scale): min and max values of the color scale which indicates the transfer function module in the time-frequency plot. You can improve the contrast by reducing the span between zmin and zmax. If zmin >= zmax, then the option flag autoZ is automatically activated.

Logx: put log scale on the x axis of the plot

Logy: put log scale in the y axis of the plot

Logz: put log scale in the z axis of the plot

Gridx: show vertical grid lines along the x axis

Gridy: show horizontal grid lines along the y axis

Gridz: show grid lines along the z axis

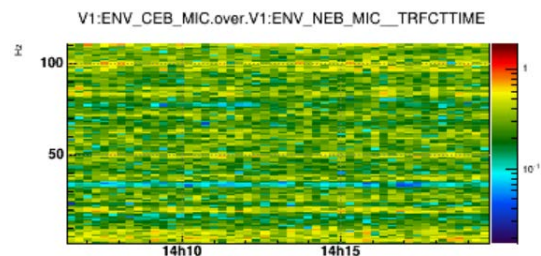
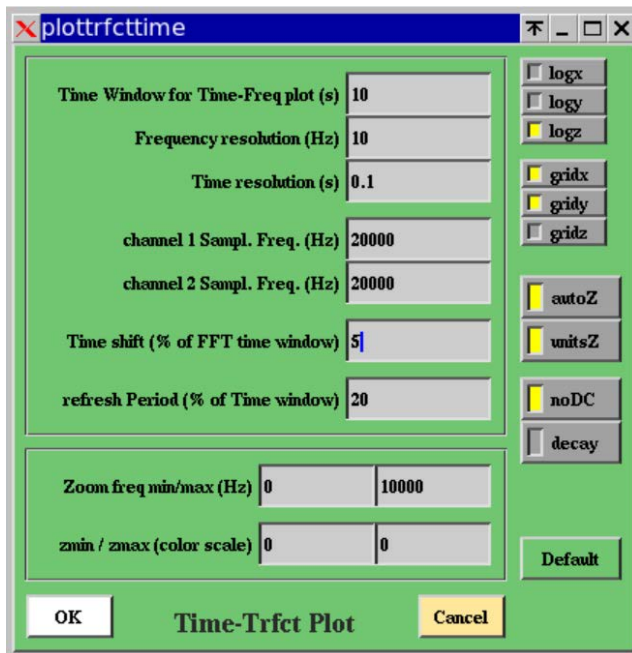
autoZ: sets automatically the min and max on Z axis according to the current data displayed

unitsZ: show on z axis calibrated data instead of raw ADC counts

noDC: subtract from the data the mean value computed over the data samples of the last FFT

decay: use a moving average when averaging the transfer functions

Default: put default values for all the parameters of the edit panel



1252850800.0000 : Sep 18 2019 14:06:22 UTC dt:1.00s nAv:32

5.10 COHE plot

The edit panel of the COHE plot has the following input fields and buttons:

Time window: number of seconds of data for the FFT used for the coherence computation

Channel 1 Sampl Freq: sampling or resampling frequency of the first channel

Channel 2 Sampl Freq: sampling or resampling frequency of the second channel

Time Shift (% of time window): shift over the input data between each FFT computation

Number of FFT to average: number of FFTs used to compute the coherence.

Refresh period (in number of FFT): number of FFT computed between each plot's update

freqmin/freqmax: min and max of the frequency band shown in the plot

ymin/ymax: min and max value of the coherence shown on the plot (should be between 0 and 1)

Time shift between ch1 and ch2: shift (in sec) applied between channel1 and channel2 before computing the coherence between them

Band-pass filter (fmin/fmax): min and max frequencies of the pass-band filter applied on the two channels before computing the coherence

2D Cohe Yaxis fmin/fmax: min and max of the frequency band shown on Y axis in case a bicoherence plot is shown.

Logx: put log scale on the x axis of the plot

Logy: put log scale in the y axis of the plot

Gridx: show vertical grid lines along the x axis

Gridy: show horizontal grid lines along the y axis

Sqrt: use correlation instead of the square of the correlation in the definition of the coherence

autoY: sets automatically the min and max on Y axis according to the current data displayed

unitsY: show on y axis calibrated data instead of raw ADC counts

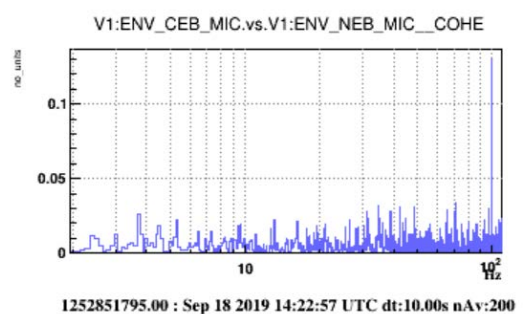
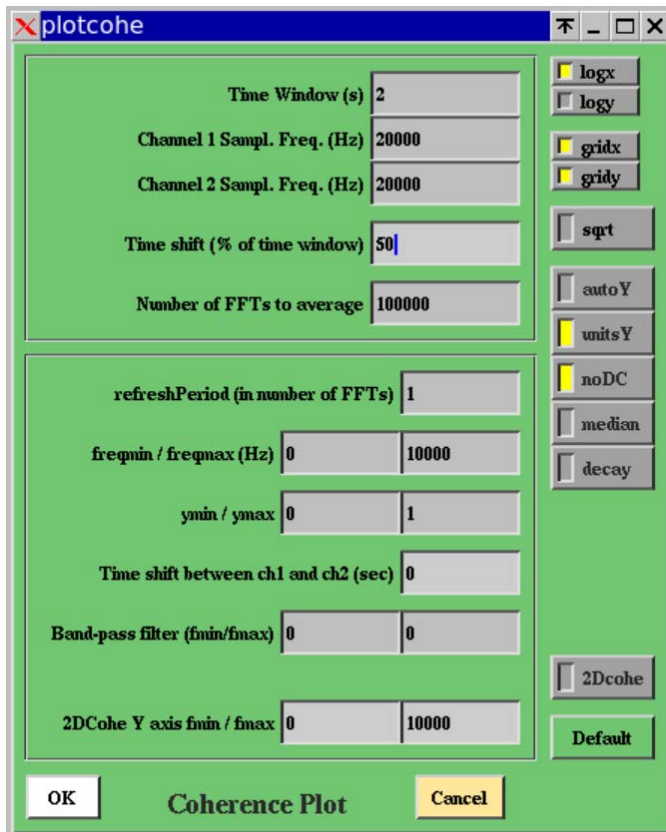
noDC: subtract from the data the mean value computed over the data samples of the last FFT

median: compute a median coherence instead of an averaged coherence

decay: use a moving average when computing the averaged coherence

2D Cohe: if this flag is ON, a bicoherence plot is displayed instead of the usual coherence. The bicoherence allows to see coherence between channel1 at frequency f1 and channel2 at frequency f2

Default: put default values for all the parameters of the edit panel



5.11 COHETIME plot

The edit panel of the COHETIME plot has the following input fields and buttons:

Time window for Time-Freq plot: number of seconds over which the time-frequency plot is shown

Frequency resolution: width (in Hz) of each bin on the Y (frequency) axis

Time resolution: width (in sec) of each bin on the X (time) axis. If the time resolution is 10 sec and if each FFT is computed over 1 sec (frequency resolution of 1 Hz), the each bin on X axis will contain the average (or the median) over 10 FFTs.

Channel 1 Sampl Freq : sampling or resampling frequency of the numerator channel

Channel 2 Sampl Freq: sampling or resampling frequency of the denominator channel

Time Shift (% of FFT time window): time shift in input data between two consecutive FFT computation. It is a percentage of the FFT time window. The size of the FFT time window is the inverse of the frequency resolution. If the time shift is 30%, it means that the overlap between two consecutive FFT time windows is 70%.

Refresh Period (% of time window): quantity of data read between two consecutive plot's update.

Zoom freq min/max: min and max of the frequency band shown on the Y axis (this does not prevent to make an unzoom once the plot is done and to see all the frequency band between 0 and the Nyquist frequency).

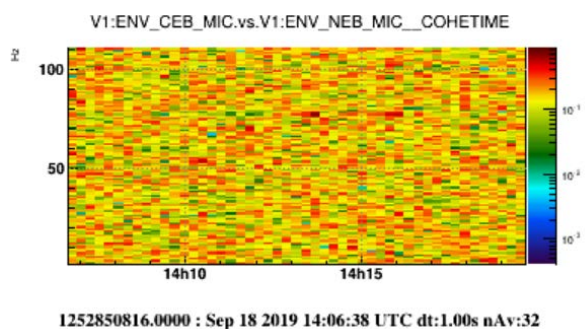
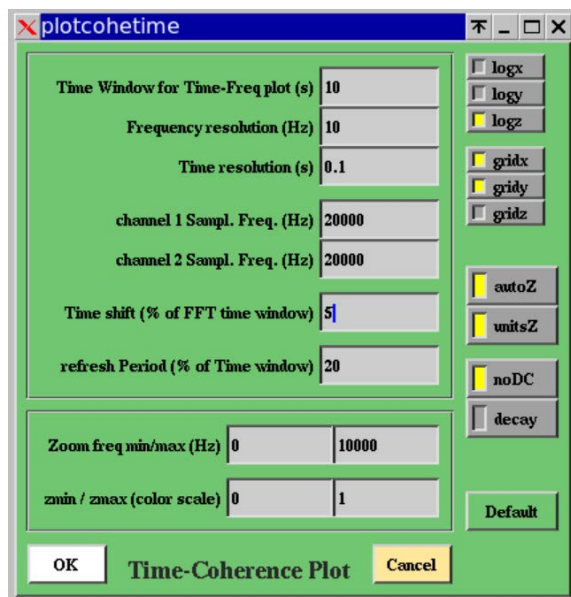
zmin / zmax (color scale): min and max values of the color scale which indicates the coherence in the time-frequency plot. You can improve the contrast by reducing the span between zmin and zmax. If $zmin \geq zmax$, then the option flag autoZ is automatically activated.

Logx: put log scale on the x axis of the plot

Logy: put log scale in the y axis of the plot

Logz: put log scale on the z axis of the plot

Gridx: show vertical grid lines along the x axis
Gridy: show horizontal grid lines along the y axis
Gridz: show grid lines along the z axis
autoZ: sets automatically the min and max on Z axis according to the current data displayed
unitsZ: show on z axis calibrated data instead of raw ADC counts
noDC: subtract from the data the mean value computed over the data samples of the last FFT
decay: use a moving average when computing the average of coherences
Default: put default value for all the parameters of the edit panel

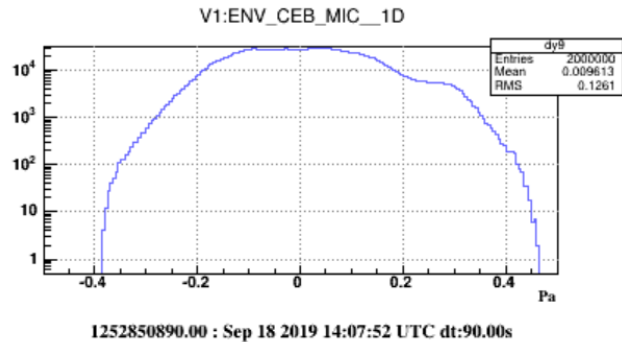
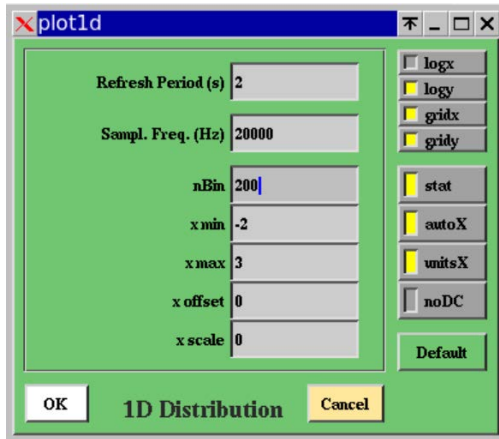


5.12 1D-DISTRIB plot

The edit panel of the 1D-DISTRIB plot has the following input fields and buttons:

Refresh Period: number of seconds of data read between two plot's update
Sampl. Freq.: sampling or resampling frequency of the input channel
xnBin: number of bins initially used to show the 1D distribution of the input channel
xmin: min value of the X axis
xmax: max value of the X axis
x offset: offset added to the input channel samples before computing the 1D distribution
x scale: scale applied to the input channel samples before computing the 1D distribution

Logx: put log scale on the x axis of the plot
Logy: put log scale in the y axis of the plot
Gridx: show vertical grid lines along the x axis
Gridy: show horizontal grid lines along the y axis
autoX: sets automatically the min and max on X axis according to the current data displayed. In this case the xmin value is down extended by a factor 2 if one sample is below it and the xmax value is extended up by a factor 2 if one sample is above it.
unitsX: show on x axis calibrated data instead of raw ADC counts
noDC: subtract from the data the mean value computed over the data samples used for the distribution
Default: put default values for all the parameters of the edit panel



5.13 1DTIME plot

The edit panel of the 1DTIME plot has the following input fields and buttons:

Time window: number of seconds over which the 1D distribution evolution is shown

Statistics time window: number of seconds of data used to compute one 1D distribution (thus number of bins on the X axis of the plot)

nBin of the distribution (on Y axis) : number of bins used to shown the 1D distribution (thus number of bins on the Y axis of the plot)

Sampl Freq: sampling or resampling frequency of the input channel

Refresh Period (% of time window): duration of the stretch of data read between two plot's update

ymin / ymax: min and max of the 1D distributions shown on Y axis

zmin/zmax (on color scale): min and max of the number of samples in the distributions

Logx: put log scale on the x axis of the plot

Logy: put log scale in the y axis of the plot

Logz: put log scale in the z axis of the plot

Gridx: show vertical grid lines along the x axis

Gridy: show horizontal grid lines along the y axis

Gridz: show grid lines along the z axis

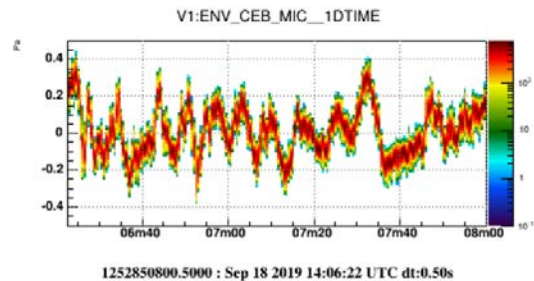
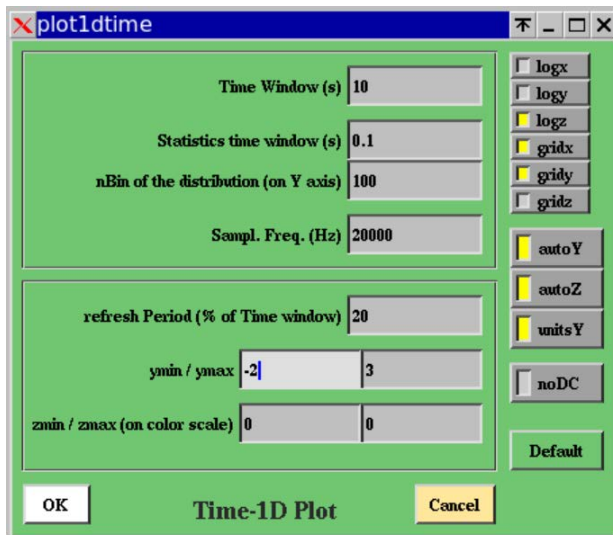
autoY: sets automatically the min and max on Y axis according to the current data displayed

autoZ: sets automatically the min and max on Z axis according to the current data displayed

unitsY: show on y axis calibrated data instead of raw ADC counts

noDC: subtract from the data the mean value computed over the data samples used for the distribution

Default: put default values for all the parameters of the edit panel



5.14 2D-DISTRIB plot

The edit panel of the 2D-DISTRIB plot has the following input fields and buttons:

Refresh Period: number of seconds of data read between two plot's update

Channel 1 Samp Freq: sampling or resampling frequency of the first channel

Channel 2 Samp Freq: sampling or resampling frequency of the second channel

xnBin: number of bins on X axis, for channel 1

xmin: min of the span shown on X axis for channel 1

xmax: max of the span shown on X axis for channel 1

xscale: scale applied on the samples of channel 1

xoffset: offset added to the samples of channel 1

ynBin: number of bins on Y axis, for channel 2

ymin: min of the span shown on Y axis for channel 2

ymax: max of the span shown on Y axis for channel 2

yscale: scale applied on the samples of channel 2

yoffset: offset added to the samples of channel 2

Time shift between ch1 and ch2: shift (in sec) applied between channel1 and channel2 before displaying the 2D distribution, that is channel1 versus channel2.

Logx: put log scale on the x axis of the plot

Logy: put log scale in the y axis of the plot

Logz: put log scale in the z axis of the plot (color scale)

Gridx: show vertical grid lines along the x axis

Gridy: show horizontal grid lines along the y axis

Stat: if this flag is ON, statistics box is displayed on the plot

autoXY: sets automatically the min and max on X and Y axis according to the current data displayed

unitsXY: show on X and Y axis the calibrated data instead of the raw ADC counts

color: display the plot with color scale on z axis

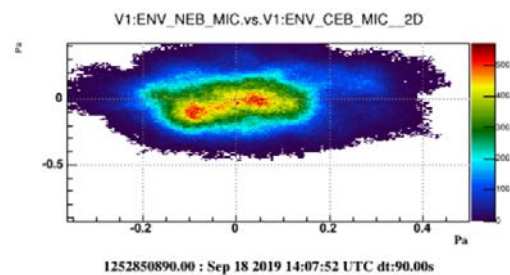
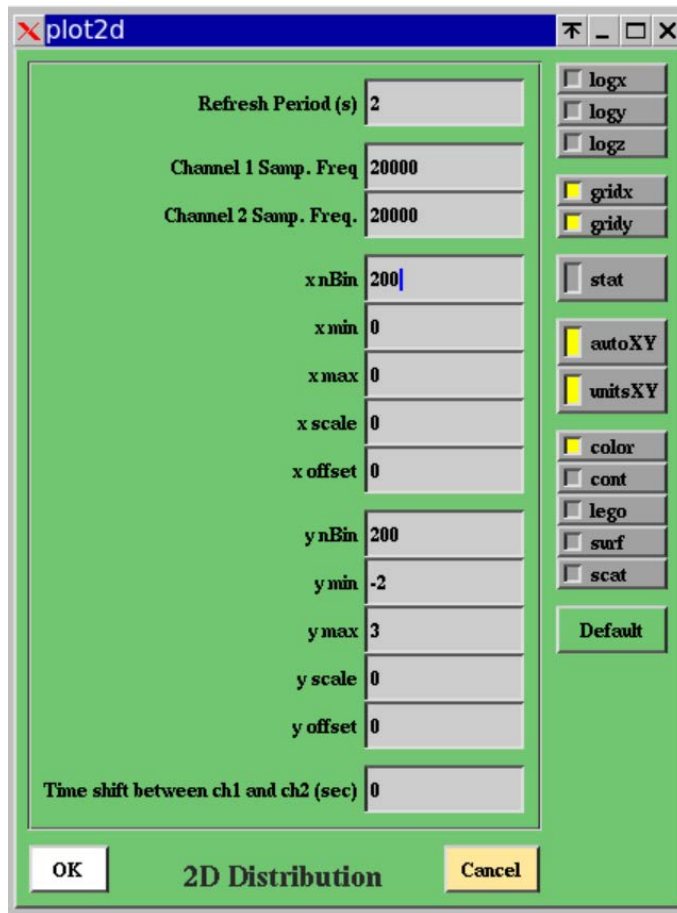
cont: display the plot with contours showing z-levels

lego: display the plot as a 3D lego plot

surf: display the plot as a 3D surface

scat: display the plot with points whose density is proportional to the value on z axis

Default: put default values for all parameters of the edit panel



5.15 RAW-IMAGE plot

The edit panel of the RAW plot has the following input fields and buttons:

Sampl. Freq. : sampling or resampling frequency of the input channel

Number of images to average: in case the input channel contains images, number of images to average between each plot's update

min/max: min and max values of the channel's samples displayed versus the parameter of X axis (which is time if the raw channel contains a time-serie, frequency if the raw channel contains a spectrum, etc...)

Refresh Period: number of seconds of data read between two plot's update

Logx: put log scale on the x axis of the plot

Logy: put log scale in the y axis of the plot

Logz: put log scale in the z axis of the plot (if raw channel contains a camera image)

Gridx: show vertical grid lines along the x axis

Gridy: show horizontal grid lines along the y axis

Gridz: show grid lines along the z axis

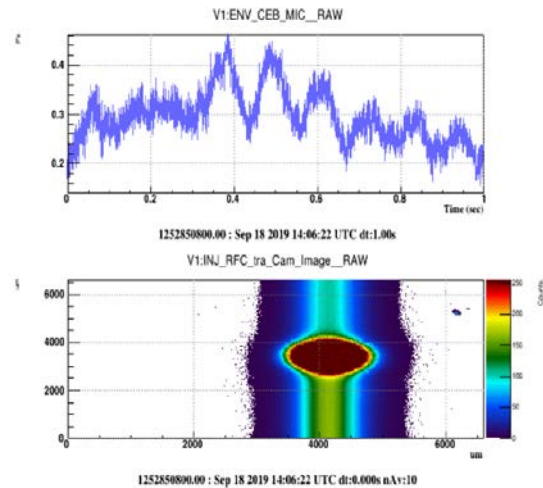
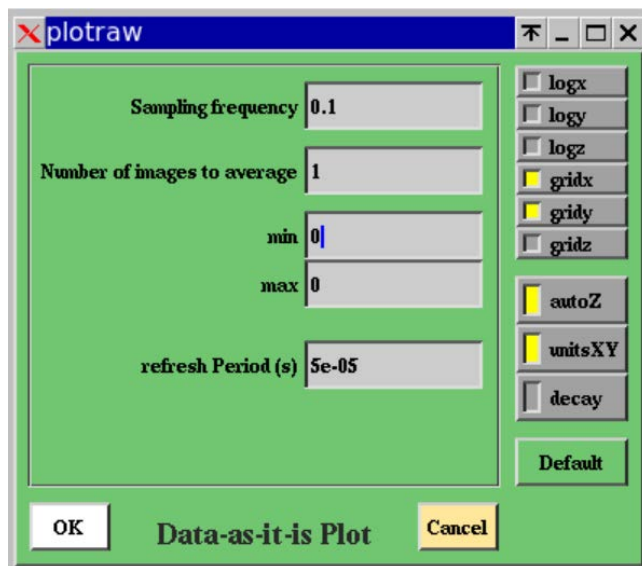
autoZ: sets automatically the min and max on Z axis according to the current image data displayed

unitsXY: show on x and y axis calibrated data instead of raw ADC counts

noDC: subtract from the data the mean value computed over the data samples of the last FFT

decay: use a moving average when computing the averaged images

Default: put default values for all the parameters of the edit panel



5.16 RAWTIME plot

The edit panel of the RAWTIME plot has the following input fields and buttons:

Time window: number of seconds over which is shown the evolution of the raw channel

Sampling Frequency : sampling or resampling frequency of the raw channel

Number of raw packets to average: number of raw channel packets (one packet per frame) to average to fill one X bin of the plot

Refresh Period (% of time window): size of the data stretch to read between two plot's update

zmin / zmax: min and max values of the raw channel to display

Logx: put log scale on the x axis of the plot

Logy: put log scale in the y axis of the plot

Logz: put log scale in the z axis (color scale) of the plot

Gridx: show vertical grid lines along the x axis

Gridy: show horizontal grid lines along the y axis

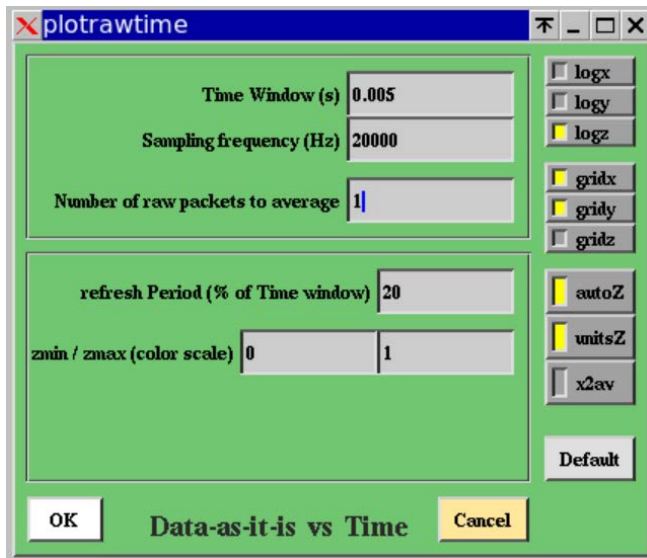
Gridz: show grid lines along the z axis

autoZ: sets automatically the min and max on Z axis according to the current data displayed

unitsZ: show on z axis the calibrated data of the raw channel instead of raw ADC counts

x2av: average the square of the raw channel packets instead of the raw channel packets

Default: put default values in all the parameters of the edit panel



5.17 AUDIO plot

The edit panel of the AUDIO plot has the following input fields and buttons:

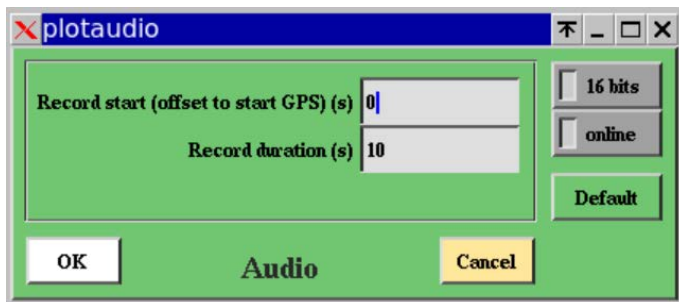
Record start: start GPS time of the data to read to be audio recorded

Record duration: duration of the data to read to be audio recorded

16 bits: if this flag is ON, the output audio channel will be on 16 bits instead of 8 bits (better dynamic)

Online: if this flag is ON, the output audio is sent to loudspeaker in addition to being recorded in a file

Default: put default values for all the parameters of the edit panel



6 Reference Plots

The button “Ref Plots” in the main panel shows a menu with the following items:

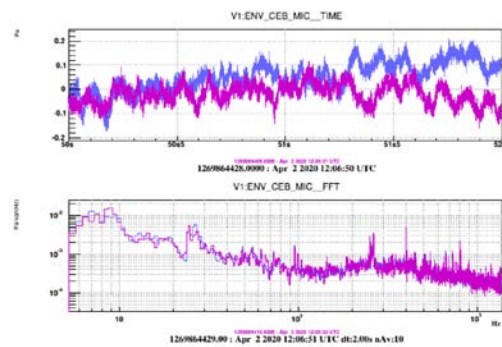
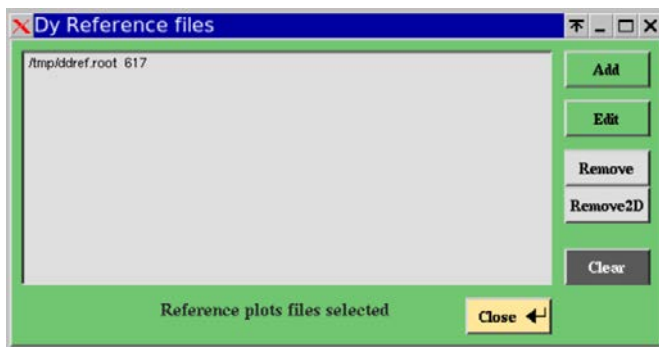
Set Reference Plots: Clicking on this button save the current plots into a file ddref.root and set them as reference plots to be superposed to the current plots. By default, the color of the superposed reference plots is purple.

Remove Reference Plots: Remove the reference plots currently superposed to the plots and remove the file ddref.root.

Get Reference Plots: Read from a file a set of reference plots to be superposed to the current plots.

Save Reference Plots: Save in a file the current reference plots

Edit Reference Plots: Set the color of the various reference plots that you previously get from various files. The edition panel of the Reference Plots allows to load reference plots taken from different files and to attribute a ROOT color code to each of them.



7 Tools and Options

The button “Tools” of the main panel shows a menu with the following items:

Reset: It allows to reset the list of plots and the list of channels as if you have never read data with the dataDisplay.

Col x Row: It allows to choose the number of columns and rows in the ROOT Canvas that displays the plots. This item is redundant with the “Plots Pattern” button available over the plots browser in the mainbrowser panel.

Sliding along plots: It opens a “Move in Plots” panel that provides several sliders to navigate inside the last plot selected or inside all the plots of the same type as the last plot selected (depending if the flag “all plots” is off or on). Let’s create 3 FFT plots. Now let’s zoom on the X axis of all of them. Then, you can use the Slider of the X position to move your zoomed view over the available frequency X axis. Item 4 is “Align Plots in time”. It changes time window and periods of updates so that all the plots are refreshed synchronously.

Define User Functions: It opens a panel with the list of user-defined functions that can be used to combine channels.

Output data files: It opens a panel where you can define a selection of channels to output, the directory where will be written the output frame files and the number of frames per file. Then, if you switch on the “Write frames on files” flag, the selected channels will be written on files each time the dataDisplay is running and reading data.

Options: It opens an Options panel where you can set various options about the channels browser, the plots browser and the display of the plots. Do one TIME plot and one FFTIME plot, then try the various options to see their effect.

Checks: It outputs in the xterm window where the dataDisplay was started a full check list of the inputs, channels and plots parameters.

Debug: It opens a panel where you can choose the type of debug and the level of debug. You can also choose a waiting time between each plot update in order to see dataDisplay running at low speed.

Help: It opens the same Help panel as the Help button of the main panel.

7.1 The Options panel

The Options panel contains several options about the channels list of the plots display can be set off/on and where some parameter values can be changed for all the plots.

Below is the list of the options available:

Log/Lin X: Clicking on this button put log scale (alternatively linear scale) on the X axis of all the plots

Log/Lin Y: Clicking on this button put log scale (alternatively linear scale) on the Y axis of all the plots

Zoom Legends : Apply a new font size to all the legends of superposed plots (usually 0.07 is sufficient).

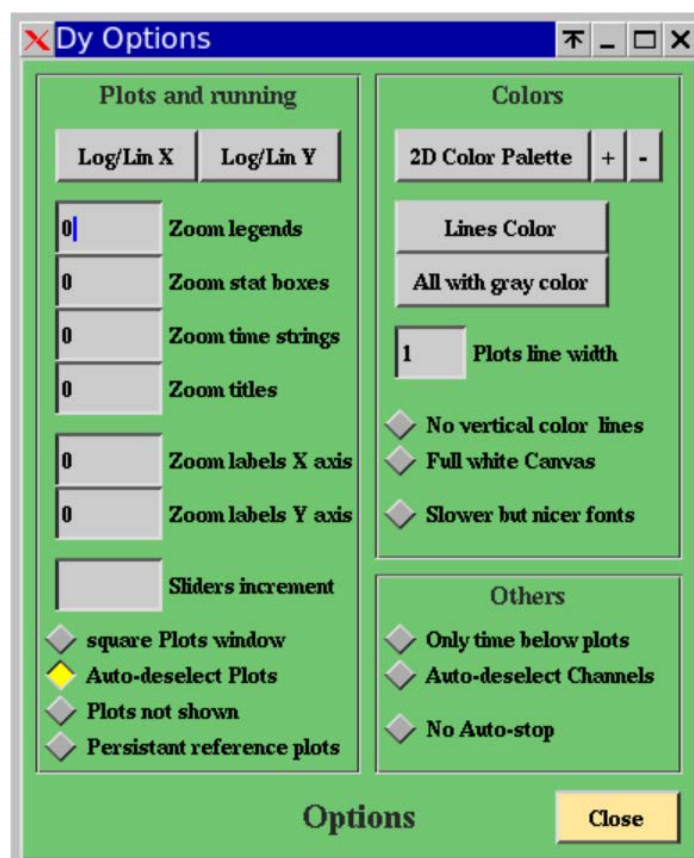
Zoom Stat boxes : Apply a new size of the stat boxes of all the 1D plots (usually 0.07 is sufficient).

Zoom time strings: Apply a new font size to all the time strings shown under the plots.

Zoom titles: Apply a new font size to all the titles shown above the plots
Zoom labels on X axis: Apply a new font size to the labels on X axis of all the plots (usually 0.06 is ok)
Zoom labels on Y axis: Apply a new font size to the labels on Y axis of all the plots (usually 0.06 is ok)
No Auto-stop : if this flag is ON, the dataDisplay will not stop automatically after one week of inactivity
Auto-deselect Plots : if this flag is ON, plots in the plots browser are deselected after each action.
Auto-deselect Channels: if this flag is ON, channels in the ch. browser are deselected after each action.
Plots not shown: if this flag is ON, the plots are built but not shown until you click on Stop button
Persistent reference plots: if this flag is ON, the reference plots are persistently superposed to plots

2D Color Palette: each time you click on this button, a new color palette is chosen for the 2-dim plots.
Lines Color Set: each time you click on this button, a new color set is chosen for the 1-dim plots
Gray colors: if this flag is ON, all the colors in 1-dim or 2-dim plots are turned into grey nuances.
Plots line width: set the width of the lines in 1-dim plots. Default is 1. Better visibility is 2.

No vertical colored lines: if this flag is ON, the color bars indicating missing or corrupted data are removed. This removes also the color boxes that indicates ITF not locked or other user defined trigger.
Full white Canvas: if this flag is ON, the ROOT canvas is fully white, without delimitation of each pad.
Slower but nicer fonts: if this flag is ON, dataDisplay uses nicer fonts for all the labels and titles. But this slows down the dataDisplay each time the plots are updated in the ROOT canvas.
Square Plots window: if this flag is ON, the plots are forced to be square, whatever the size of the canvas
Trigger ON: if this flag is ON, the trigger that has been defined in the main browser becomes active.
Pause when trigger: if this flag is ON, a Pause is done each time the trigger condition is verified.



Option panel

7.2 The Sliders panel

This panel allows to move the eyes position on a zoomed plot (or a full set of zoomed plots of the same type). Here are the following sliders:

xposition: the slider moves the position of the zoomed window on X axis of the last plot zoomed.

xmin: this slider change the min value of the zoom on the X axis of the last plot zoomed

xmax: this slider change the max value of the zoom on the X axis of the last plot zoomed

yposition: the slider moves the position of the zoomed window on Y axis of the last plot zoomed.

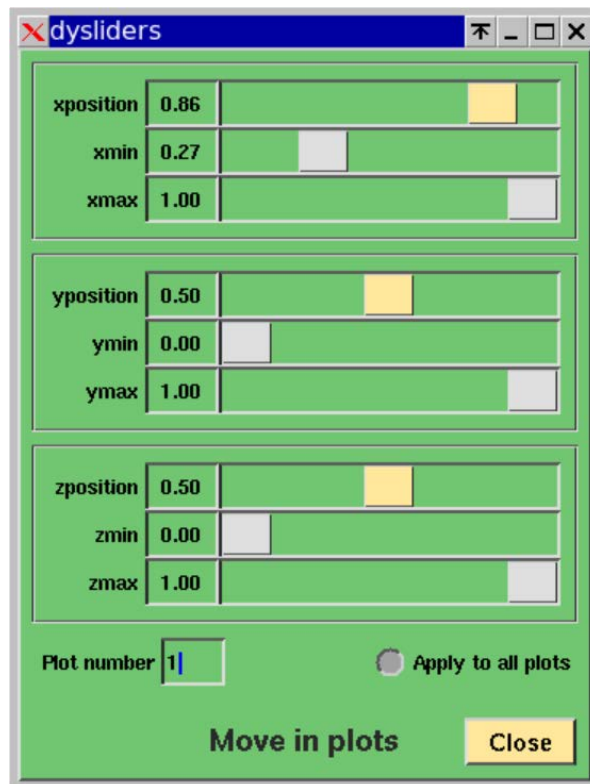
ymin: this slider change the min value of the zoom on the Y axis of the last plot zoomed

ymax: this slider change the max value of the zoom on the Y axis of the last plot zoomed

zmin: this slider change the min value of the zoom on the Z color axis of the last plot zoomed

zmax: this slider change the max value of the zoom on the Z color axis of the last plot zoomed

Apply to all plots: if this flag is ON, the sliders apply on all the plots of the ROOT canvas which are of the same type as the last zoomed plot.



Sliders panel

7.3 The debug panel

This panel allows to choose the part of the dataDisplay code to debug and the level of debugging. The following items of the panel are:

General Check: Write in the xterm window where the dataDisplay started a full check of the channels and plots parameters

See Called functions: if this flag is ON, the debugging will show the name of each function used by the dataDisplay when you use the GUI or when data are read and plots are computed and displayed.

Speed monitoring: if this flag is ON, the debugging will show the time (in milliseconds) passed in each step of the data reading and plots building steps, after you clicked on the “Start” button of the main panel.

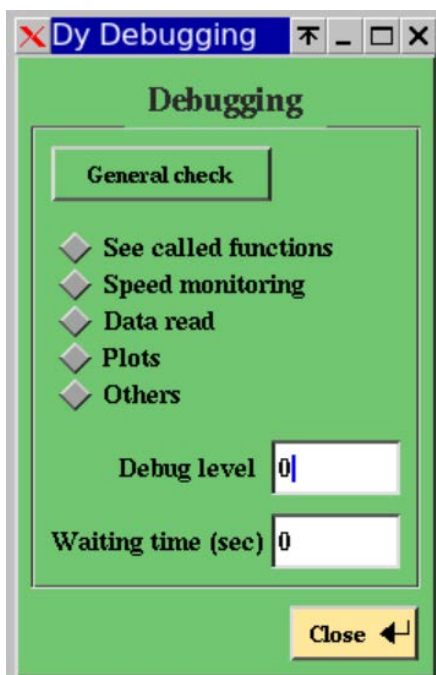
Data read: if this flag is ON, the debugging will show any debug message dedicated to the part of the code dedicated to connection to input sources and to data reading.

Plots: if this flag is ON, the debugging will show any debug message dedicated to the part of the code dedicated to plots generation, computation and display. It concerns also reference plots and action on plots like zooming.

Others: if this flag is ON, the debugging will show any debug message dedicated to the part of the code dedicated to any part of the dataDisplay code that is not directly dedicated to data reading or plots management.

Debug level: for each of the above debug types, the debug level 1 provides the main useful information. Level 2 provides a bit more details and level 3 is very verbose, with many details including the dump of each vector of input data.

Waiting time: This is the number of seconds between each plots update. The main purpose of this feature is to allow the user to have the time to see the changes in the plots between two updates.



Debug panel

8 Plots Root menus

The ROOT menus that appear when you right click on a plot or on the X or Y axis of a plot have additional features specific to dataDisplay. Those customized menus are described below.

8.1 The plot's line menu

If you put the mouse on the line of a 1-dimensional plot or on the bins of a 2-dimensional plot and right click, a ROOT menu appears. It contains some of the usual ROOT items but also additional items specific to dataDisplay:

VDyPlot::dy1	
ExportAscii	ExportAscii: Export in an ascii file the X,Y values of the plot. Such file can then be used for instance to do the same plot in matlab.
Scale_And_Offset	Scale_And_Offset: Apply a scaling factor to the data samples in the plot, then apply an offset.
Scale_AroundMean	Scale_AroundMean: Apply a scaling factor to the data samples in the plot, after their mean value has been subtracted.
FFTOfDerivative	FFTOfDerivative: Compute the FFT of the derivative of the data samples in the plot.
FFTOfPrimitive	FFTOfPrimitive: Compute the FFT of the integral of the data samples in the plot.
Differentiate	Differentiate: Compute the derivative of the data samples in the plot.
IntegrateRms	IntegrateRms: Compute the integral of the rms of the data samples in the plot, starting from the last sample.
SuperposeExternalPlot	SuperposeExternalPlot: Take a plot from a ROOT file and superpose it to the current plot.
RemoveRefPlot	RemoveRefPlot: Remove any reference plot which may have been superposed to the current plot.
DrawPanel	
Fit	
FitPanel	
Rebin	
SetMaximum	
SetMinimum	
SetStats	
SetTitle	
SaveAs	
SetDrawOption	
SetLineAttributes	
SetFillAttributes	
SetMarkerAttributes	

8.2 The X axis and Y axis menu

If you put the mouse on the X axis of a plot, a ROOT menu appears. It contains some of the usual ROOT items dedicated to plots axis management but also additional items specific to dataDisplay:

TAxis::xaxis
Update Time/Freq
Log/Lin All
Zoom All Labels
Zoom All Legends
Zoom All StatBox
Zoom ALL X as last
Zoom X axis as last
UnZoom ALL X
UnZoomX
Zoom ALL Y as last
Zoom Y axis as last
Scale Y as last
Scale ALL Y as last
UnZoom ALL Y
UnZoomY
UnZoom ALL Z
UnZoom
ZoomOut
SetMoreLogLabels
SetNoExponent
SetDecimals
SetRange
SetRangeUser
SetTicks
✓ SetTimeDisplay
SetTimeFormat
SaveAs
SetNdivisions

Update Time/Freq: Apply the same change of the width of the time window or the frequency window to all the plots (TBC).

Log/Lin All: Put log scale (alternatively linear scale) on the X axis (resp. Y axis) of all the plots of the same type as the plot for which you right clicked on the X axis (resp. Y axis).

Zoom All Labels: Zoom all the labels of the X axis (resp. Y axis) of all the plots if you right clicked on the X axis (resp. Y axis) of one plot.

Zoom All Legends: Zoom the legends of all the plots which are superposed or the title of all the plots which are not superposed.

Zoom All StatBox: Zoom all the statistical boxes of the 1D plots.

Zoom ALL X as last: Apply to all the plots of the same type, the last zoom you did on the X axis of a plot.

Zoom X axis as last: Apply the last zoom you did on a X axis to the plot where you right clicked. This is canceled if the plots have not the same type.

UnZoom ALL X: Unzoom the X axis of all the plots

UnZoomX: Unzoom the X axis of the plot where you right clicked.

Zoom ALL Y as last: Apply to all the plots of the same type, the last zoom you did on the Y axis of a plot.

Zoom Y axis as last: Apply the last zoom you did on a Y axis to the plot where you right clicked. This is canceled if the plots have not the same type.

Scale ALL Y as last: Apply to all the plots of the same type, the last zoom you did on the Y axis of a plot, but using the relative scale of the zoom instead of the absolute values on Y axis.

Scale Y as last: Apply the last zoom you did on a Y axis to the plot where you right clicked, but using the relative scale of the zoom instead of the absolute values on Y axis. This operation is canceled if the plots have not the same type.

UnZoom ALL Y: Unzoom the Y axis of all the plots

UnZoomY: Unzoom the X axis of the plot where you right clicked

UnZoom All Z: Unzoom the Z color axis of all the 2D plots.

9 Useful Additional Tools

In addition to the dataDisplay software, the Dy package contains a set of useful tools to generate raw data frames for test, to view quickly raw data or to convert frame format to wav audio format and vice-versa.

9.1 rawframe.C

This ROOT script generates frames containing a predefined set of raw data channels, whose names are the following:

vect1d : a freq serie (a FFT) in FrProcData to be displayed with RAW-IMAGE
vect2d : a 2D vector (image) in FrProcData to be displayed with RAW-IMAGE
vectbreakfreq : a time serie in FrAdcData with a change of sampling frequency in the middle
vectbreakslope : a time serie in FrAdcData with a change of adc slope in the middle
vectadc : a time serie in FrAdcData with increasing value
vectproc : a time serie in FrProcData with increasing value
vectproc2 : a time serie in FrProcData of type 2 with increasing value

All the channels contain a ramp, each sample having the value of its time indice, except vect2d which contains always gaussian noise added to the frame number.

Syntax is:

```
root -l rawframe.C\(\outputfilename, nframe, t0, framedt, noise\)
```

Example :

```
root -l rawframe.C\(\"rawfile.gwf\", 30, 1112223334, 1., 1.\)
```

It generates 30 frames of 1 second, starting at GPS time 1112223334.

All the channels will contain a ramp added to a Gaussian noise of rms equal to 1.

Those frames are written in the output file rawfile.gwf

9.2 rawview.C

This ROOT script allows to view quickly the channels directly as they are stored in the frames. It is equivalent to using the plot RAW-IMAGE in the dataDisplay.

Syntax is:

```
root -l rawview.C\(\channel, deltat, inputfile, gpsstart, gpsend, ngroup, timesleep)
```

channel: name of the input channel

deltat : the time step of data read

inputfile: the frame file from which channel is read

gpsstart: the starting GPS of the data read (if 0 then last data of the file are read)

gpsend: the end GPS of the data read (if below 700000000, it is then considered as a duration)

ngroup: number of samples regrouped before visualization (ngroup=0 means no regroup)

timesleep: the number of seconds between two successive updates of the plot

Example 1: root -l rawview.C(\\"V1:SWEB_B8_Cam2_Image\\",1,\\"/virgoData/ffl/raw_O3b.ffl\\")

It shows the camera image from SWEB_B8_Cam2_Image. Data are read by bunches of 1 sec from the input file /virgoData/ffl/raw_O3b.ffl

Example 2: root -l rawview.C(\\"V1:Hrec_hoft_20000Hz\\")

It shows the channel Hrec_hoft_20000Hz as it is stored in the frames. Default values of the other parameters are used (deltat=1, inputfile=raw.ffl, gpsstart=0, gpsend=20, ngroup=0, timesleep=10)

9.3 sound2frame

This compiled C code allows to convert a wave formatted audio file into a frame formatted file readable by the dataDisplay.

Syntax is:

/virgoApp/Dy/vXrY/\$UNAME/sound2frame.exe inputfile framelength

FRAME to WAVE

If input file's name ends with .gwf or .ffl, it means that input file is a frames file.

Then sound2frame converts a frames file to a wave audio file whose name is frametowave.wav).

In this case, optional arguments are the channel name, the start GPS, the end GPS (or duration if less than 700000000)

Example: sound2frame inputfile.gwf "ENV_CEB_MAG*" 1270000010 100

It read frame formatted data from inputfile.gwf , takes all the channels whose names start with ENV_CEB_MAG, over 100 sec starting at GPS=1270000010 and produces, for each channel, an output file channelname.wav

WAVE to FRAME

If file's name ends not with .wav, it means that input file is an audio file.

Then, sound2frame converts a wave audio file to a frames file whose name is wavetoframe.gwf

In this case, optional argument is the frame length in seconds.

Example: sound2frame inputfile.wav 10

It reads the audio file samples and, for each bunch of 10 seconds, it writes a frame containing one channel named wavetoframe, in the output frames file named wavetoframe.gwf

If frame length is ≤ 0 , sound2frame converts a wave audio file to a wave audio file, named wavetowave.wav, and frame length is interpreted as a resampling frequency

Example: sound2frame inputfile.wav -8000

It read the audio file inputfile.wav, resamples the data at 8000 Hz and writes the result into the audio file wavetowave.wav

10 Bibliography

- [1] dataDisplay : VIR-0237A-15 <https://tds.ego-gw.it/?content=3&r=11672>
- [2] The Frame Format: VIR-0067A-08 <https://tds.virgo-gw.eu/ql/?c=2080>
- [3] The Frame library (Fr): <https://lappweb.in2p3.fr/virgo/FrameL/>
- [4] The Frame Vector library (Frv): <https://lappweb.in2p3.fr/virgo/FrameL/>
- [5] The Xforms library (Xforms): <http://xforms-toolkit.org/>
- [6] The ROOT library (ROOT): <https://root.cern.ch>
- [7] The Cm library (Cm): <https://websvn.ego-gw.it/listing.php?repname=advsw&path=%2FDCm>

11 Appendix A : Video tutorials

The dataDisplay video tutorials are available from : <https://lappweb.in2p3.fr/virgo/dataDisplay>

11.1 Video 1: Starting dataDisplay

From a machine on the Virgo site, to start dataDisplay, you can open a xterm window and type « dataDisplay ». This should open the dataDisplay mainpanel which provides you with a set of fields and buttons that we are going to describe in the following video tutorials.

The Virgo dataDisplay is a software tool mainly based on ROOT and Xforms libraries for the visualization and for the Graphical User Interface and on Framelib and Frv library for what concerns the data access and the signal processing. dataDisplay is dedicated to online and offline visualization of various type of signal processing plots taking as input the various channels provided by the Virgo data acquisition system.

We will see in the following tutorials how to access to those channels, how to combine channels, how to create and edit plots and how to use ROOT dataDisplay specific features to do various actions on the plots.

11.2 Video 2: Inputs

First you need to access the data. If you click on the Input button, you get a menu showing the various types of data that you can access. Read FFL item is dedicated to the access to any frame formatted data through what is called ffl files. The ffl files are text files containing lists of frame formatted data files. For instance, if you choose the raw.ffl file, you will have access to all the raw data channels recorded by Virgo during the last months.

Using the Read File item, you can access directly to one or several frame formatted files, without the need of using a ffl. This is mainly dedicated to additional data sets that is not a Virgo official data stream or that you have produced yourself. Note that if you select several files, they will be considered as independent files instead of a serie of files containing data to be concatenated.

Using the Read Online item, opens a new interface panel which shows the various online servers that your dataDisplay can access to get data directly from the DAQ, with a latency of a few seconds. Once connected to an online server, you get the list of the channels currently available. You can then manage the channels to do plots the same way as when taking data from input files. One caveat: you can read data from several input files in parallel, but you can not read data from input files at the same time as data from online servers.

11.3 Video 3: Mainbrowser : Channels management

Once you got the list of channels, you can choose one or several channels by clicking on them. Then, any plot you choose will be created for those selected channels.

In order to help you to find the channels you are looking for, a search field and a filter field are available. The search field get channels corresponding to the first letters you type in. The filter field allows to move at first place in the channel list the channels corresponding to your selection. For instance: V1:ENV_*_NE*

To get the result, you need to type the “return” key.

If the channel you are looking for is not in the list, this is maybe because it is not always present in the data stream (either it is a channel with a sampling frequency below 1 Hz or it is a channel produced intermittently). In this case, click on the Update button after providing a GPS time for which you suspect that the channel is present.

In addition, you can use the upper buttons to sort the channels by name or by frequency or by input file name.

The CH. INFO button provides in the xterm window where the dataDisplay was started a short description of each channel selected.

11.4 Video 4: Mainbrowser: Combine channels

You can also create new channels by combining various channels using the usual operations (+,-,x,/) and using any function available in math C library. For instance, select the three following channels and click on “Combine Channels” button. Then, you can edit the Operation line. In this example, we change the name of the resulting channel to “rate_of_power”, we change the default + signs and we apply a sinus function on the first channel. Clicking on the “Create new channel” button, a channel named “zz_rate_of_power” is created. You can then use it to do plots, like for any other channels. Once the new channel has been created and even once plots have been created using this new channel, you can change the Operation formula that defines this new channel. If you create a second channel and then select again the channel “zz_rate_of_power” the last formula used is shown in the Operation line.

11.5 Video 5: Mainbrowser: Plots management

To create a new plot, just select one or several channels in the channels browser and click on one of the middle buttons (TIME, FFT, etc...). For each selected channel, one plot will be created and will be visible in the plots browser. If you choose 2D, COHE, or TRFCT, two channels are required for such plots. They will be taken in alphabetic order within the list of selected channels.

The button TIME creates a plot showing samples versus time.

The button BRMSTIME creates a plot showing the bandrms (rms computing over a limited frequency band) of the channel versus time. The bandrms samples are provided with the same sampling frequency as the original channel.

The button FFT creates a plot showing the power spectral amplitude (Fast Fourier Transform with $1/\sqrt{\text{Hz}}$ units) of the channel.

The button FFTTIME creates a plot showing the time–frequency map or spectrogram (time evolution of the FFT) of the channel.

The button TRFCT creates a plot showing the module and phase of the transfer function between two channels.

The button TRFCTTIME creates a plot showing the time evolution of the module of the transfer function.

The button COHE creates a plot showing the coherence (correlation normalized by the square of the auto-correlations) between two channels.

The button COHETIME creates a plot showing the time evolution of the coherence.

The button 1D-DISTRIB creates a plot showing the distribution of the channel samples

The button 1D-TIME creates a plot showing the time evolution of the distribution

The button 2D-DISTRIB creates a plot showing one channel versus another one

The button RAW-IMAGE creates a plot showing the raw values of a channel, as it is stored in the frames. For channels named *_image, it shows the images provided by Virgo cameras.

The button RAWTIME creates a plot showing the time evolution of the raw channel. If the channel contains for instance a spectrum (data versus frequency) instead of a time series, RAWTIME will show the time evolution of a spectrum, a spectrogram.

The AUDIO button creates an audio file in raw wav format on 8 or 16 bits, containing the samples of the channel. So, no plot here but a wav audio file is created for each channel selected.

Once you have created your plots, you can edit their parameters, as we will see later, but you can also do some operations on them:

The “Move Up” and “Move Down” buttons allow you to change the ordering of the plots in the list, which is the ordering of the plots in the canvas that will appear when you click on “Start” on the main panel.

The “Superpose” button allows to superpose in the same pad all the plots (of the same type) selected in the plots list. You can cancel the superposition by selecting superposed channels and clicking on the “Unsuperpose” button.

The “Permute Var” buttons allow to permute the channels within any 2D, COHE or TRFCT plots.

The “Get channel” button allows you to select in the channels list all the channels involved in the selected plots.

The “Hide” button allows you to hide from computation and display the selected plots. The “Show” button puts them back again in the game.

Next videos will show you how to edit plot parameters and how to switch on-off features specific to each plot type.

11.6 Video 6: Edit Plot TIME

If you created a TIME plot for the channel ENV_CEB_MIC, you can then click on the “Edit Plot” button to modify its parameters. You get a panel with several parameter fields and a set of options on the right side.

You can first choose to resample the data at 1000 Hz. You can also choose to update the plot only when new data have been read on a duration of 10% of the time window displayed. You can then modify the lower and upper bounds ymin and ymax of the TIME plot. In this case, do not forget to switch off the “autoY” flag on the right side.

You can also add an offset to the data displayed and rescale them. For instance, if you put an offset of 2 and a scaling factor of 3, the data will be scaled by a factor 3 and then offset by 2.

Now, let’s click on the OK button.

We can then choose a starting date and a duration, on the main panel and click on the “Start” button. We get a plot showing the data of the ENV_CEB_MIC channel, resampled at 1000 Hz, multiplied by 3 and offset by 2...

Now, let’s go back into the TIME plot edition panel. You can also apply a pass-band filter to visualize only the part of the signal which is between the two frequencies fmin and fmax. Here, we choose the frequency band between 20 and 50 Hertz.

Now, let’s click on the OK button.

We get a plot showing the data of the ENV_CEB_MIC channel, resampled at 1000 Hz, multiplied by 3 offset by 2 and filtered between 20 and 50 Hertz...

Now, let’s go back into the TIME plot edition panel and put back to zero the offset and scale and put back fmin and fmax to zero.

If we switch ON the “Show bits” flag, we get a quite different plot. This time, all the bits of each sample is displayed instead of the value of the sample. This can be helpful when the displayed channel contains bit-coded information, like a Virgo data quality state vector. Let’s do a time plot for the channel DQ_ANALYSIS_STATE_VECTOR, edit it and switch ON the flag “Show bits”. Click on OK and start data read. You see that the bits 1,2 and 4 of each sample of this channel are at zero.

11.7 Video 7: Edit Plot FFT

If you created a FFT plot for the channel ENV_CEB_MIC, you can then click on the “Edit Plot” button to modify its parameters. You get a panel with several parameter fields and a set of options on the right side. [To FINISH]

11.8 Video 8: Edit Plot TRFCT

If you created a TRFCT plot for the channel ENV_CEB_MIC, you can then click on the “Edit Plot” button to modify its parameters. You get a panel with several parameter fields and a set of options on the right side. [To FINISH]

11.9 Video 9: Edit Plot FFTTIME

If you created a FFTTIME plot for the channel ENV_CEB_MIC, you can then click on the “Edit Plot” button to modify its parameters. You get a panel with several parameter fields and a set of options on the right side. [To FINISH]

11.10 Virgo 10: Start/Stop/Pause and mainpanel infos

Once you have created your plots, you can set the start GPS time (or the start UTC date) and push the button “Start” to read the data. [To FINISH]

11.11 Video 11: Ref Plots management

At any time, once the data reading is finished, you can either set the current plots as Reference plots (button RefPlots / Set Reference Plots) or superpose to the current plots a set of Reference plots already

saved (button RefPlots / Get Reference Plots). You can also manage the Reference plots already saved (button RefPlots / Edit Reference Plots) and attribute to them a color. [To FINISH]

11.12 Video 12 : Options

The “Tools” button on the main panel opens an items list.

Item 1 is “Reset”. It allows to reset the list of plots and the list of channels as if you have never read data with the dataDisplay.

Item 2 is “Col x Row”. It allows to choose the number of columns and rows in the ROOT Canvas that displays the plots. This item is redundant with the “Plots Pattern” button available over the plots browser in the mainbrowser panel.

Item 3 is “Sliding along plots”. It opens a “Move in Plots” panel that provides several sliders to navigate inside the last plot selected or inside all the plots of the same type as the last plot selected (depending if the flag “all plots” is off or on). Let’s create 3 FFT plots. Now let’s zoom on the X axis of all of them. Then, you can use the Slider of the X position to move your zoomed view over the available frequency X axis.

Item 4 is “Align Plots in time”. It changes time window and periods of updates so that all the plots are refreshed synchronously.

Item 5 is “Define User Functions”. It opens a panel with the list of user-defined functions that can be used to combine channels.

Item 6 is “Output data files”. It opens a panel where you can define a selection of channels to output, the directory where will be written the output frame files and the number of frames per file. Then, if you switch on the “Write frames on files” flag, the selected channels will be written on files each time the dataDisplay is running and reading data.

Item 7 is “Options”. It opens an Options panel where you can set various options about the channels browser, the plots browser and the display of the plots. Do one TIME plot and one FFTTIME plot, then try the various options to see their effect.

Item 8 is “Checks”. It outputs in the xterm window where the dataDisplay was started a full check list of the inputs, channels and plots parameters.

Item 9 is “Debug”. It opens a panel where you can choose the type of debug and the level of debug. There is also a “General Checks” button that provides the same functionality as the item 8. You can also choose a waiting time between each plot update in order to see dataDisplay running at a low speed.

Item 10 is “Help”. It opens the same Help panel as the Help button of the main panel.

11.13 Video 13 : Help and help ballons

Finally, in addition to those video tutorials and to the main dataDisplay documentation, you can get some first help by clicking on the Help button in the main panel, by reading the text of the Help panel. And switching ON the “Help ballons” flag. Then, whenever your mouse is on a GUI element (browser, button or input field), you get a short explanation about its purpose and about the way it works.

All the video tutorials are available in:

<https://lappweb.in2p3.fr/virgo/dataDisplay> and <https://scientists.virgo-gw.eu/DataAnalysis/vod/>

12 Appendix B : dataDisplay Configuration

The dataDisplay configuration is made of a set of keywords followed by parameters. Below is a commented example of a configuration file dy.cfg produced by the dataDisplay.

The start GPS time and duration of the data to read

```
DY_TIMING
starttime 1268492700.000000 (Tue Mar 17 15:04:42 2020)
duration -1.000000
```

The various options of the plots display, plots browser, channels browser, data read, etc...

```
DY_OPTIONS
debug          0 # debug level
debugtype      1 # debug type (data read, plots, etc...)
noplots        0 # flag is 1 if plot visualization is not requested
squareplot     0 # flag is 1 if square plots are requested, whatever the ROOT Canvas config
autodeselectplot 1 # flag is 1 if plots are deselected in browser after edition
autodeselectch 0 # flag is 1 if channels are deselected in browser after use for plots
colorpalette   1 # Color palette used for 2D or time-frequency plots (default is 1)
waitdata       0 # flag is 1 if dataDisplay waits for new data once reached the end of file
fullwhite      1 # flag is 1 if ROOT Canvas and pads containing plots are all white
linewidth      1 # line width in the plots
no_autostop    0 # flag is 1 if dataDisplay stop is required once data have been all read
```

The inputs (files of shared memory or Cm connection) from which data are read.

```
DY_INPUT
chindex      0 V1:          # file number in the input list and Prefix of the channel names
inputtype    0 GWF_FILE    # file type (0=frame formatted file, 1=online frame via Cm, ...)
inputname    /virgoData/ffl/trend.ffl # name of the input file
```

The configuration of the ROOT Canvas (placement of the plots)

```
DY_PADS
ncol  1 # number of columns in the ROOT Canvas
nrow  2 # number of rows in the ROOT Canvas (available pads for plots is ncol*nrow)
```

The parameters of the plot of the pad 1 of the ROOT Canvas

```
DY_PLOT  1 dy1 # Plot number and name of the plot
type      7 TIME # Plot type (7=TIME plot that shows data versus time)
numpad    1 # Pad number of the plot
superposed 0 # flag is 1 if this plot is superposed to first plot of the pad
hidden    0 # flag is 1 if this plot is kept hidden (not built, not displayed but kept in the list)
```

```

chx_name    V1:ENV_CEB_MIC      # name of the channel displayed
chx_inputname /virgoData/ffl/trend.ffl # name of the input file providing this channel
chx_inputtype 0 # Input type (0=frame file, 1=online frame via Cm, ...)
chx_sampFreq 1 # Sampling frequency of the channel
chx_resampFreq 1 # Resampling frequency of the channel
chx_realunits 1 # flag is 1 if the real units of the channel is used instead of ADC counts
gridx 1 # flag is 1 if grid is set on X axis of the plot
gridy 1 # flag is 1 if grid is set on Y axis of the plot
logx 0 # flag is 1 if log scale is set on X axis of the plot
logy 0 # flag is 1 if log scale is set on Y axis of the plot
ydb 0 # flag is 1 if ???

tsize 2e+06 # size of the time window displayed (in seconds)
tstep 10 # percentage of the time window filled at each step
ymin 2e+31 # lower value on Y axis (if autoscale not set)
ymax -2e+31 # upper value on Y axis (if autoscale not set)
yoffset 0 # offset added to the values on Y axis
yscale 0 # scale applied to the samples of the signal displayed in the TIME plot
bits 0 # flag is 1 if bits of each sample are shown in the plot
nodc 0 # flag is 1 if average value (DC) is subtracted to the signal
autoscale 1 # min and max on Y axis are automatically set from what is displayed
filter_fmin 0 # lower frequency of the pass-band filter applied
filter_fmax 0 # upper frequency of the pass-band filter applied (no filter if fmin=fmax=0)

```

Trigger to exclude some data from pre-processing (filtering, resampling, etc...) and from the plots

DY_TRIGGERS

```

triggertype 0 # not used
triggerused 0 # flag is 1 if a trigger is used
triggerpause 0 # flag is 1 if Pause on data read is activated each time a trigger period stops

```

All the ROOT Canvas configuration is stored between the /*< and >*/ tags, as below

```

/*<
{
//=====Macro generated from canvas: gDDCanvas/dy_verkindt_17976_plots
//===== (Mon May 18 18:55:45 2020) by ROOT version5.34/05
TCanvas *gDDCanvas = new TCanvas("gDDCanvas", "dy_verkindt_17976_plots",28,88,910,570);
gDDCanvas->ToggleEventStatus();
gDDCanvas->SetHighLightColor(2);
gDDCanvas->Range(0,0,1,1);
gDDCanvas->SetFillColor(0);

```

```

gDDCanvas->SetBorderMode(0);
gDDCanvas->SetBorderSize(2);
gDDCanvas->SetLeftMargin(0.15);
gDDCanvas->SetFrameBorderMode(0);
// ----->Primitives in pad: gDDCanvas_1
TPad *gDDCanvas_1 = new TPad("gDDCanvas_1", "gDDCanvas_1",0.005,0.005,0.995,0.935);
gDDCanvas_1->Draw();
gDDCanvas_1->SetNumber(1);
gDDCanvas_1->cd();
gDDCanvas_1->Range(0,0,1,1);
gDDCanvas_1->SetFillColor(0);
gDDCanvas_1->SetBorderMode(0);
gDDCanvas_1->SetBorderSize(2);
gDDCanvas_1->SetGridx();
gDDCanvas_1->SetGridy();
gDDCanvas_1->SetLeftMargin(0.15);
gDDCanvas_1->SetFrameBorderMode(0);
gDDCanvas_1->Modified();
gDDCanvas->cd();
gDDCanvas->Modified();
gDDCanvas->cd();
gDDCanvas->SetSelected(gDDCanvas);
}
>*/

```

13 Appendix C : Associated tools

A set of additional tools are provided within the dataDisplay package:

sound2frame : converts raw audio files into frame formatted files and vice-versa.

scansrc: to get all the calls to a given function inside the dataDisplay code (more for developer)

dataSender: It is a specific package, available in /virgoApp/Ds/v1r2. The dataSender can read data from files and send them on request to a dataDisplay, through the Internet network.

14 Appendix D : Needed libraries

dataDisplay is a C and C++ code which can be compiled under CentOS7 with **CMT** or **CMake** tool. The first version released that is described by this documentation is v10r10.

The dataDisplay package, as well as the required libraries can be downloaded from:

<https://lappweb.in2p3.fr/virgo/dataDisplay> and <https://git.ligo.org/virgo/virgoapp/Dy>

The dataDisplay package uses the following libraries:

Frame library: a Virgo/LIGO specific package to read, write and manage frame formatted data. This library is regularly maintained for the purposes of the Virgo and LIGO gravitational wave experiments.

Frv library: a Virgo specific package to manage data vectors, to apply basic operations (like band rms, rms or mean and median computations) and to apply various signal processing tools (like FFT, TF, filter....). This library is one of the basis of the data collection and online/offline signal processing in the Virgo experiment.

Xforms library: an old library to build easily a quite complete GUI, with buttons, browsers, etc... This library has kept a users mailing list and a low level of maintenance. But its robustness through SL5, SL6, SL7, CentOS6, CentOS7... has allowed to keep it working well.

ROOT library: a graphical library developed at CERN since 1997. Maintained by a quite large community, this library is not always intuitive and easy to use but is quite powerful to manipulate and manage various plots and graphics.

Cm library: an old Virgo specific package to exchange data through Ethernet (TCP/IP packets) between two servers. This library is the basis of the data collection in the Virgo data acquisition system and has been quite maintained within Virgo.

In addition, part of the code of the dataDisplay is a copy of the function of the **Fd library** used by the Virgo data acquisition system and dedicated to exchange frame formatted data through the Ethernet network.