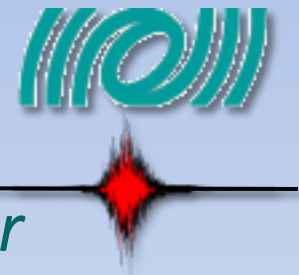


# Machine Learning short course

---

*Proposal for a Training school for  
GraWIToN*

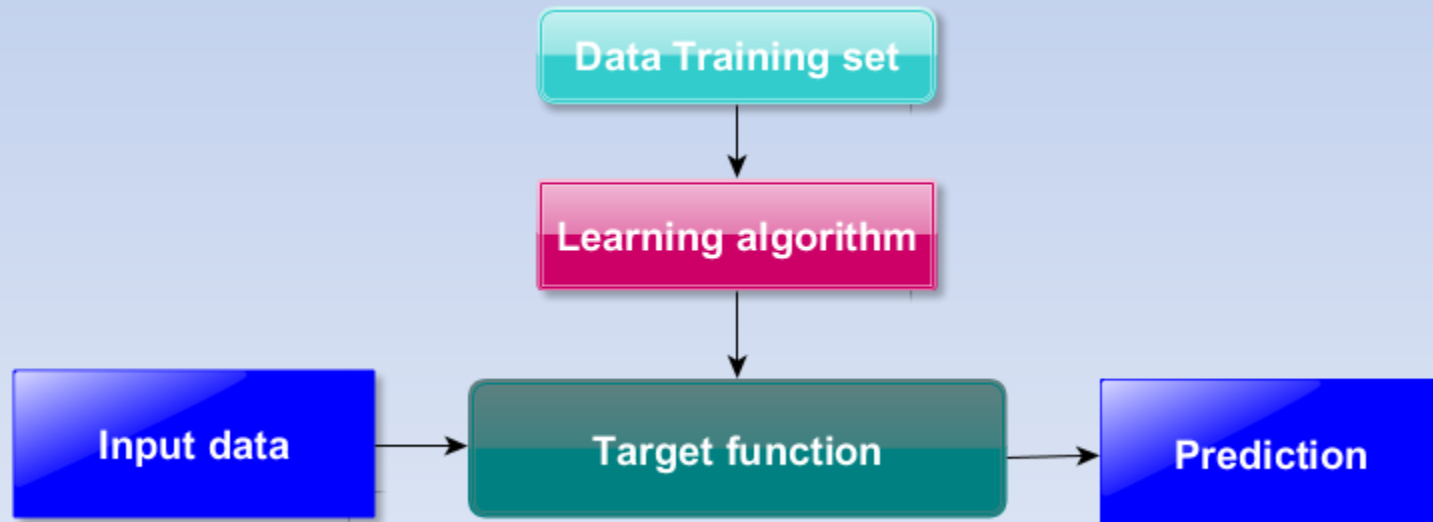


*Elena Cuoco, EGO and INFN*



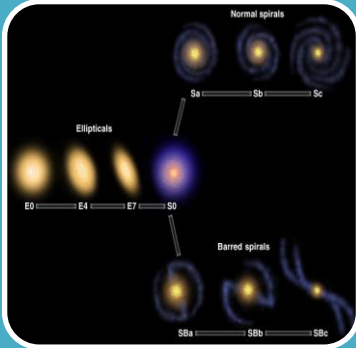
# Machine Learning: learning from data

- Machine Learning is a key technology in Big Data and in many financial, medical, commercial and scientific applications.
- It is used to produce algorithms, tools to make predictions from data.



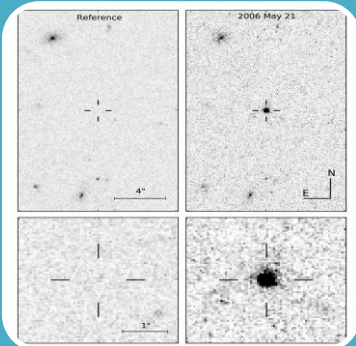


# Example: ML in Astronomy



## Big Data to analyze

- Useful for automatic classification (for example galaxy classification)



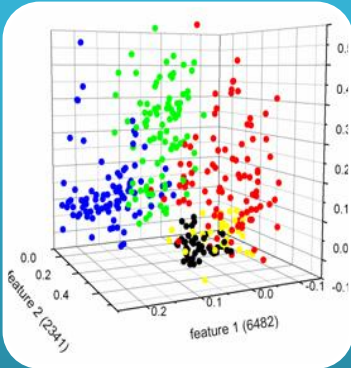
## Image processing

- Useful for pattern recognition (transient events detection)



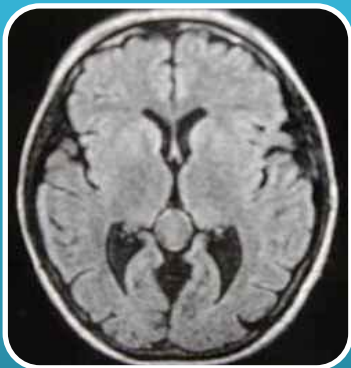


# Example: ML in Medical science



## Statistical studies

- Classify groups of patients



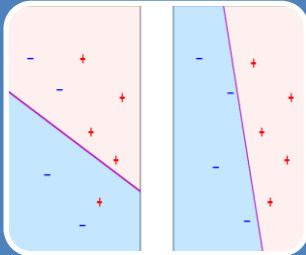
## Imaging techniques

- Pattern recognition and image processing (NMR)



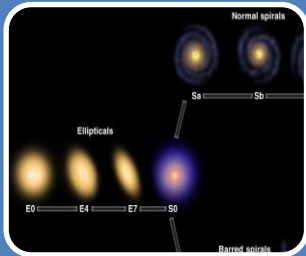
# School objective

## Multidisciplinary school



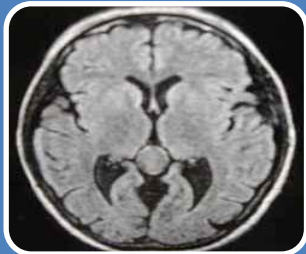
General introduction on ML concepts

- Supervised and unsupervised learning



ML in astronomy

- Useful Techniques for classification
- Applications (also to GW DA)



ML in medical science

- Image processing and pattern recognition
- Application



# Program proposal

---

- ✓ **Minimum duration: Three Days**
  - ✓ **First day:** General introduction on Machine learning techniques (with help of *Ciro Cattuto*)
  - ✓ **Second day:** Applications in Astronomy and link with GW community (with help of *Marica Branchesi*)
  - ✓ **Third day:** Pattern recognition and Medical science application (with help of *Andrea Chincarini*)





# Day prototype



9:00-  
11:00

Theory

Coffee-break

11:30-  
13:00

Theory

Lunch

14:30-  
16:30

Theory/exercises

Coffee-break

17:00-  
18:00

Exercises

end





# Collaborators

---

- ✓ Marica Branchesi: Researcher at Urbino University. In the steering committee and core team of the INAF project for EM follow-ups of GW triggers in the ADE
- ✓ Ciro Cattuto: Data Science Laboratory leader of the and Research Director of Institute for Scientific Interchange Foundation (**[www.isi.it](http://www.isi.it)**).
- ✓ Andrea Chincarini: INFN Researcher at Genova University and National coordinator of MIND (Medical imaging for Neurodegenerative Diseases)
- ✓ Elena Cuoco: EGO referent for Data Analysis and Virgo noise studies group coordinator

