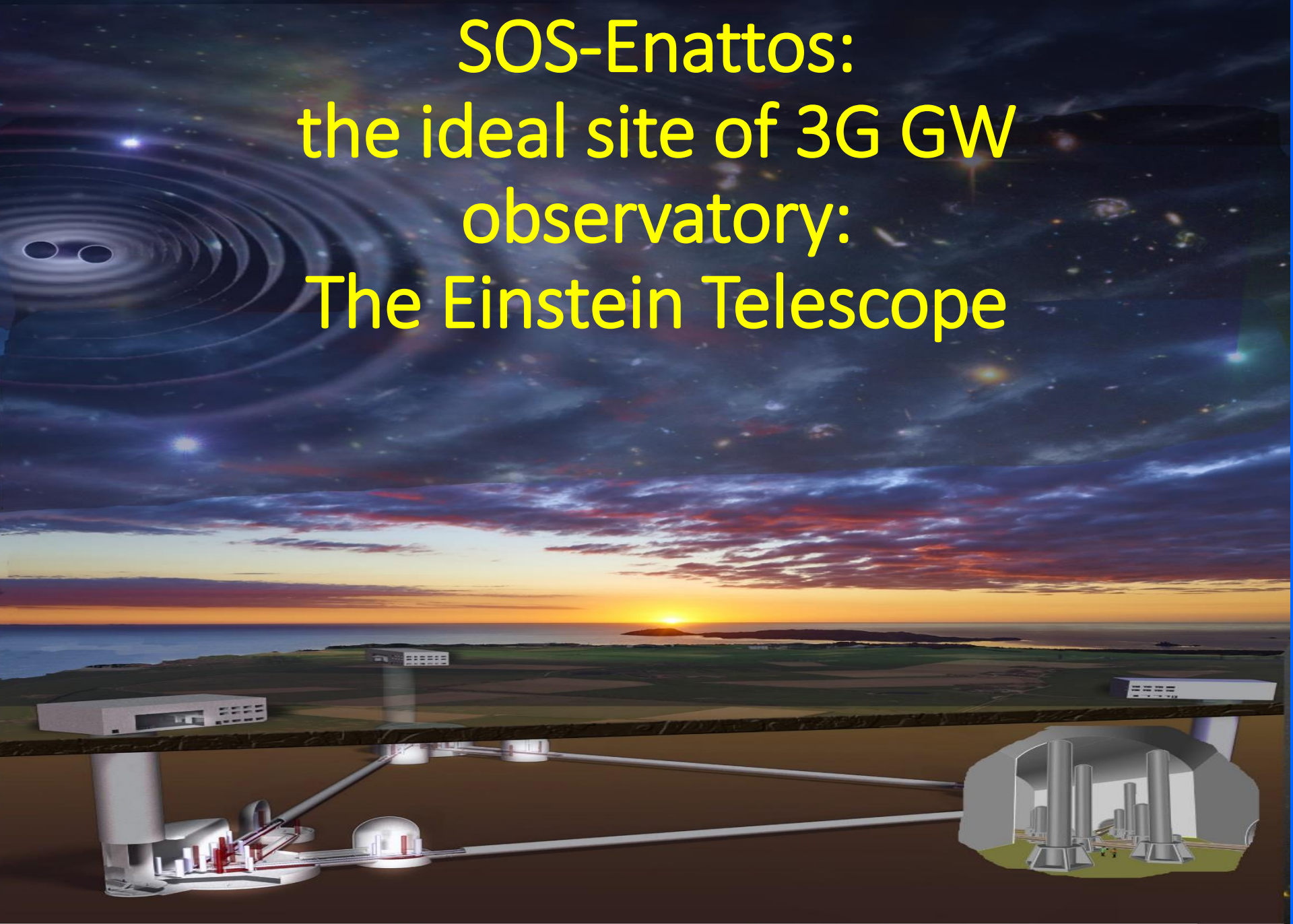
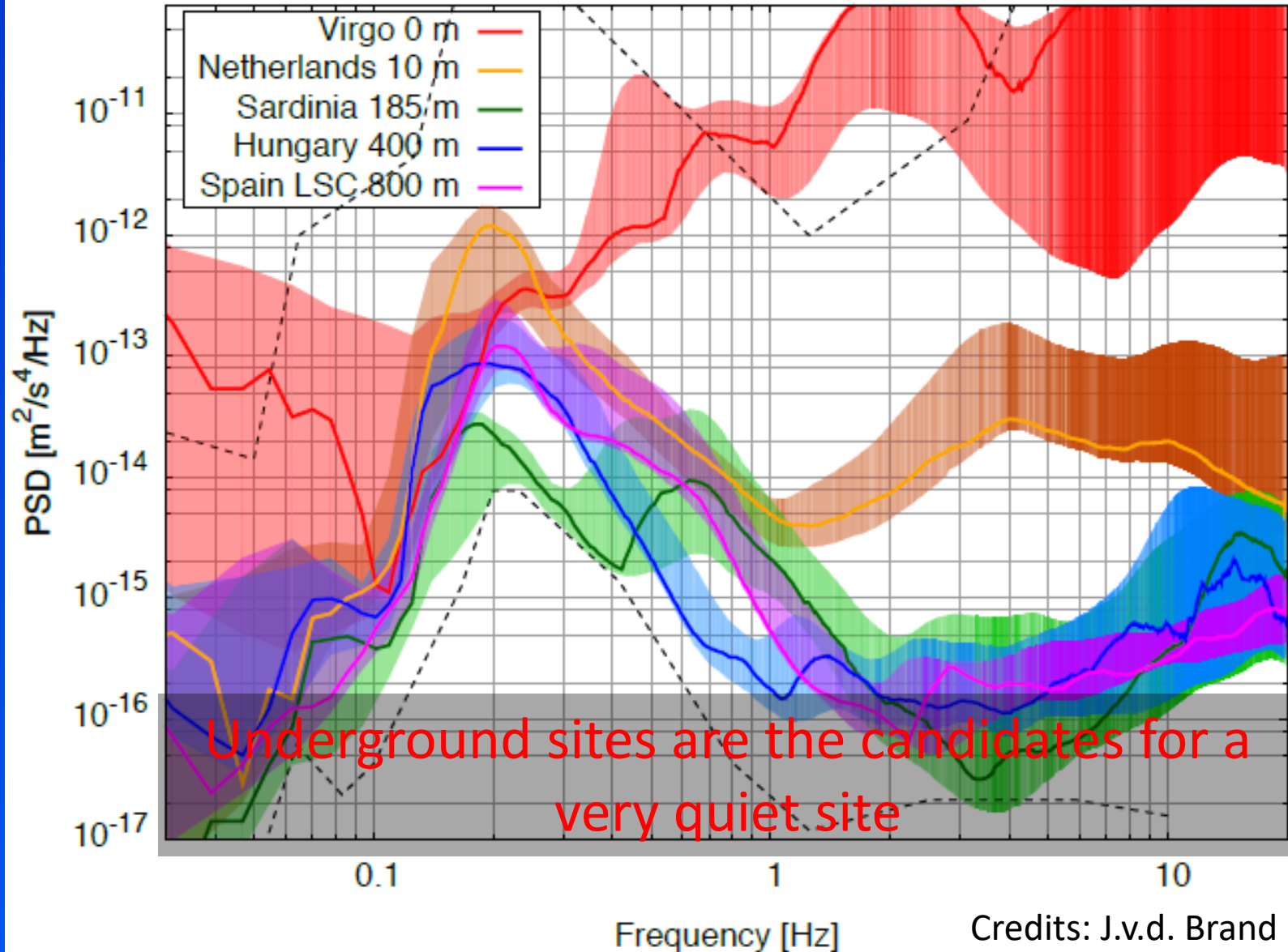


SOS-Enattos:
the ideal site of 3G GW
observatory:
The Einstein Telescope

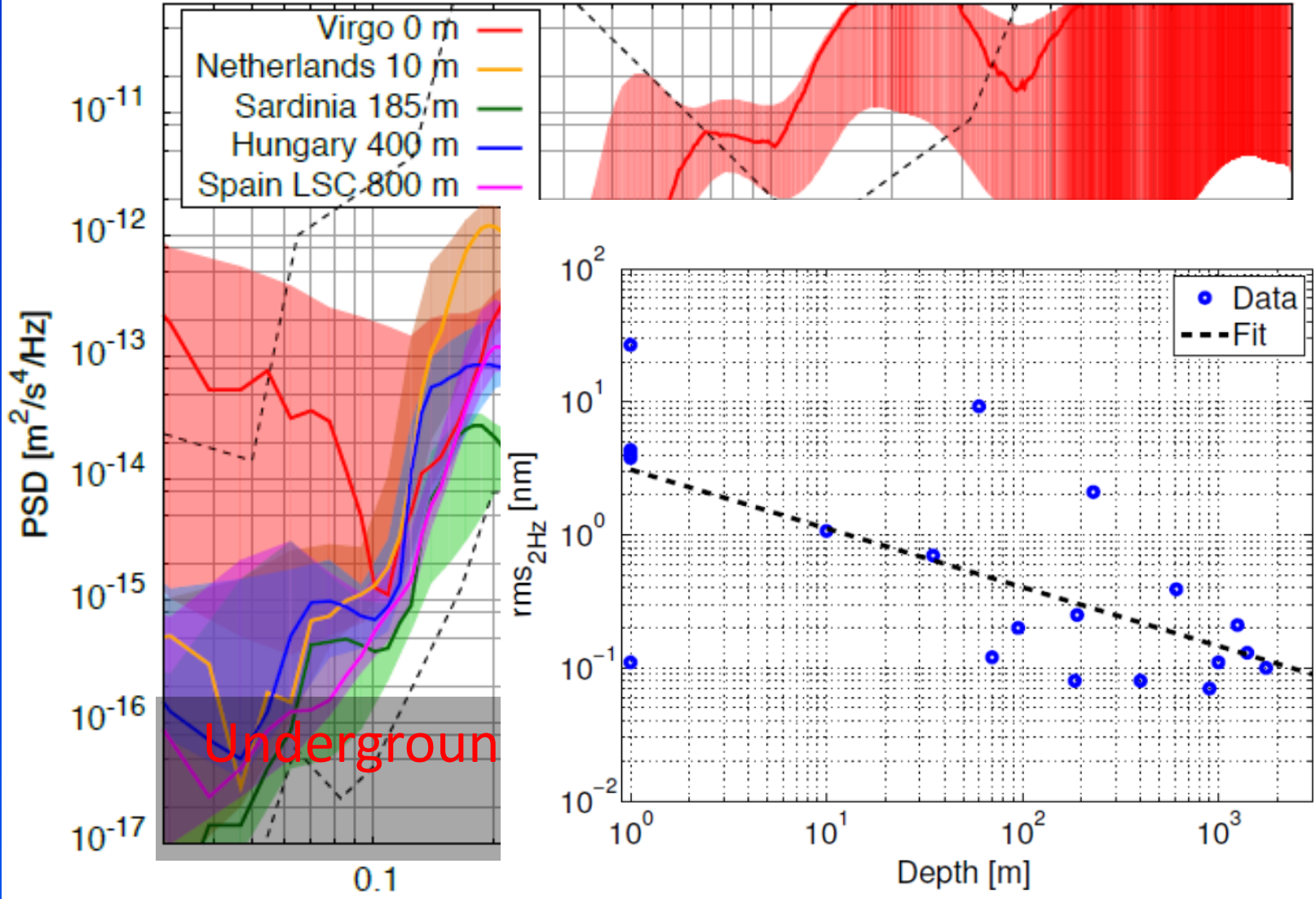


Horizontal spectral motion at various sites



Underground Seismic noise Measurement

Horizontal spectral motion at various sites



Frequency [Hz]

Credits: J.v.d. Brand

ET @SOS ENATTOS

- The idea of having ET in Sardinia originates from the peculiar characteristics of the area
 - seismically quiet
 - not urbanized/industrialized (one of the least populated areas in Europe)
 - long mining history
- We have studied the placement of the ET detector in the SOS ENATTOS area, fulfilling the following requirements:
 - Vertexes are placed in solid rock
 - Access to caverns through tunnels rather than shafts

Site Location

Sindaco Mario Calia (lista civica)
dall'11-6-2012

Territorio

Coordinate  40°28'N 9°29'E

Altitudine 521 m s.l.m.

Superficie 148,72 km²

Abitanti 1 407^[1] (31-7-2016)

Densità 9,46 ab./km²

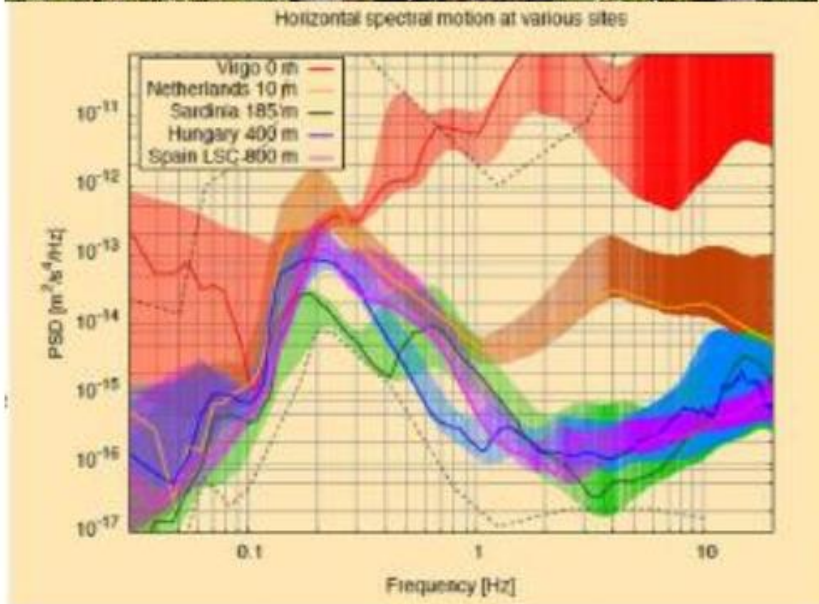
Comuni confinanti Bitti, Dorgali, Galtelli, Irgoli,
Loculi, Lodè, Onani, Orune,
Siniscola



Low Seismic and anthropic noise



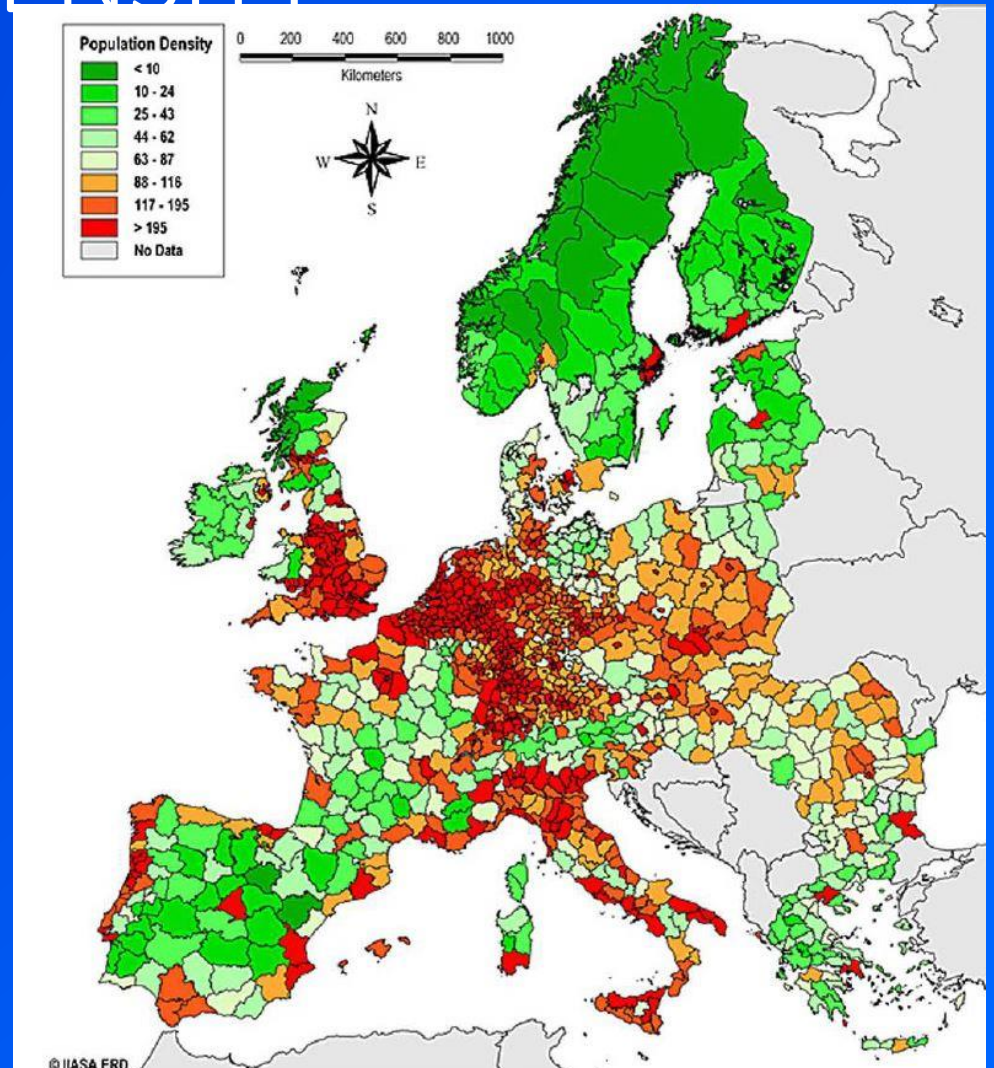
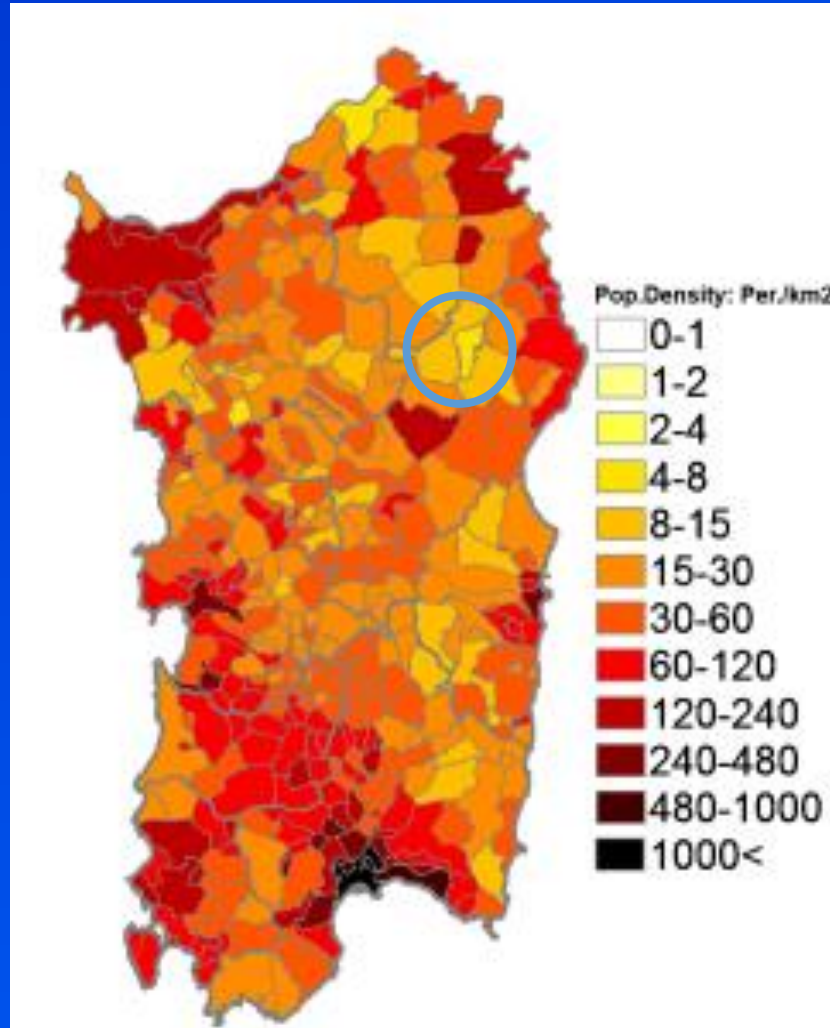
Disused mine SOS - ENATTOS presso Lula (Nu)



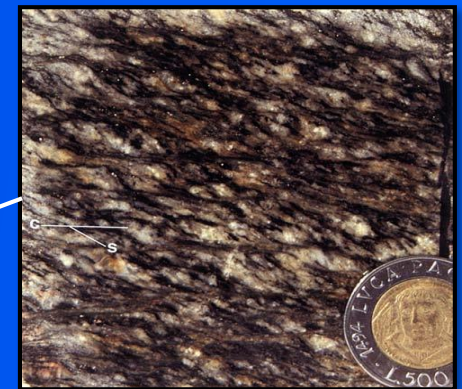
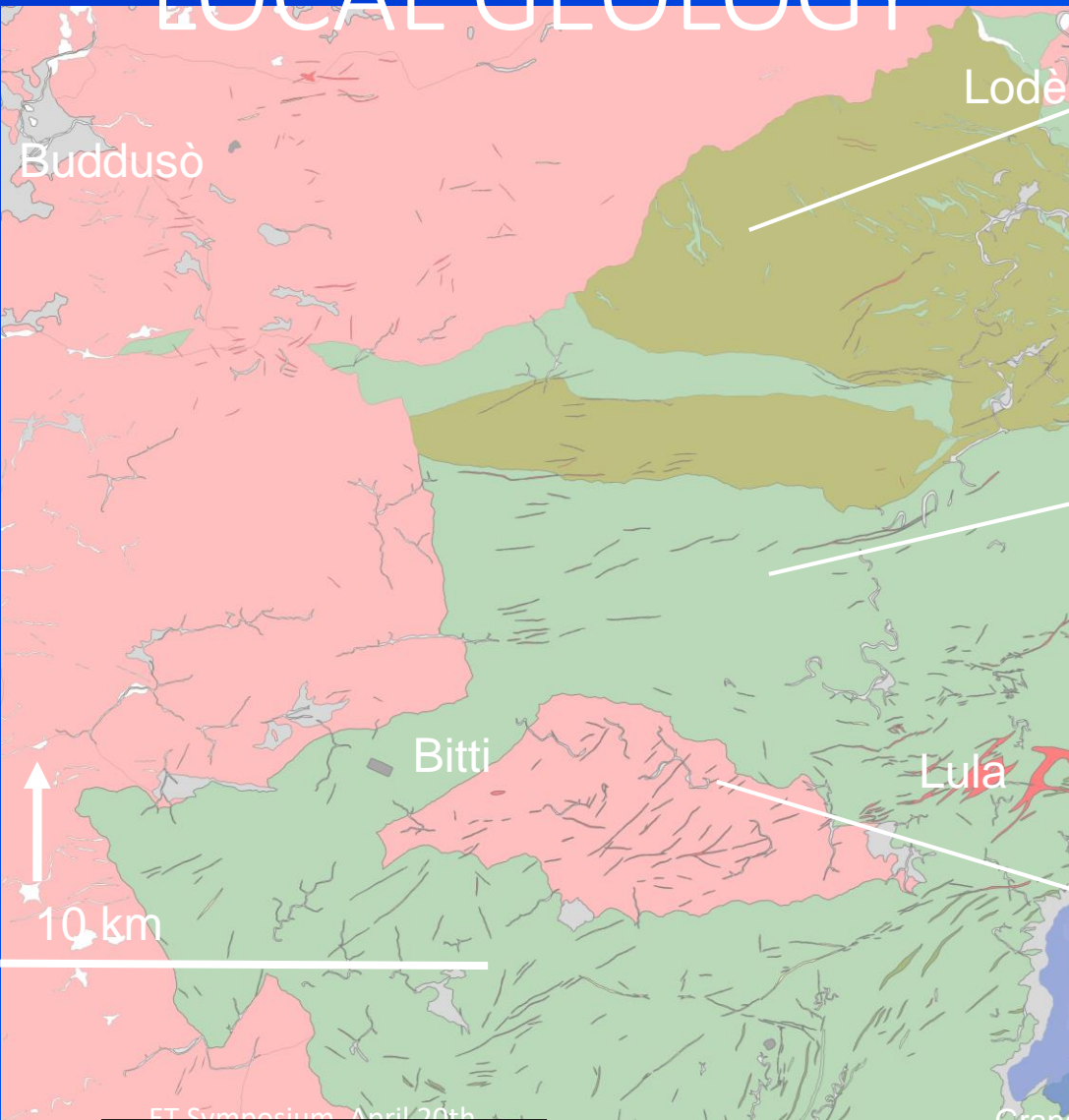
Seismic
 Measurements
 By Virgo and
 ET collaborations

SOS ENATTOS green

POPULATION DENSITY



LOCAL GEOLOGY



Orthogneiss "Lodè type"
UCS: 92.6/60.8 MPa



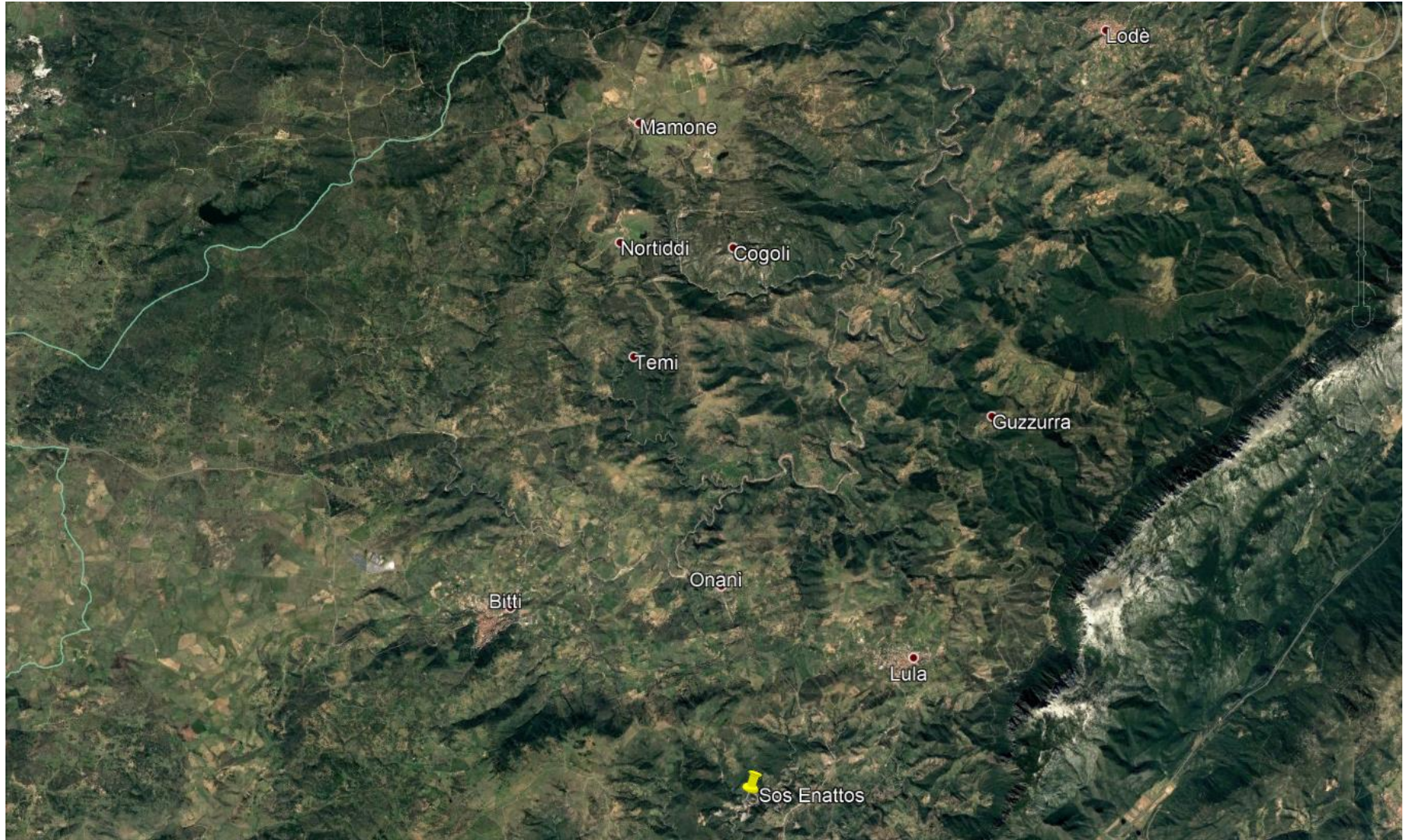
Micaschist - Paragneiss - Quartzite
UCS: 9.9/8.8 MPa



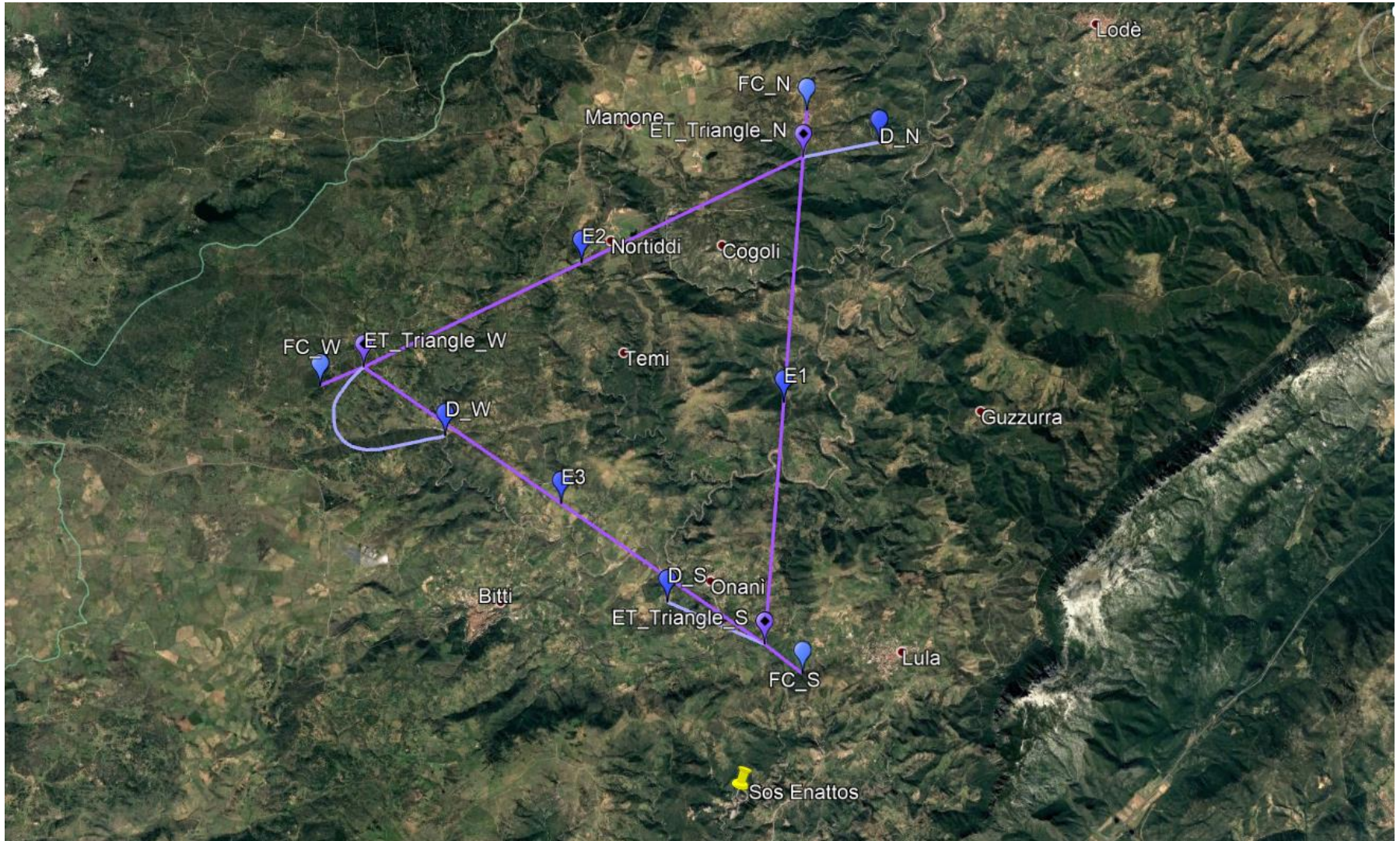
Granodiorite "Bitti type"
UCS: 72.1 MPa

*UCS: Uniaxial Compressive Strength

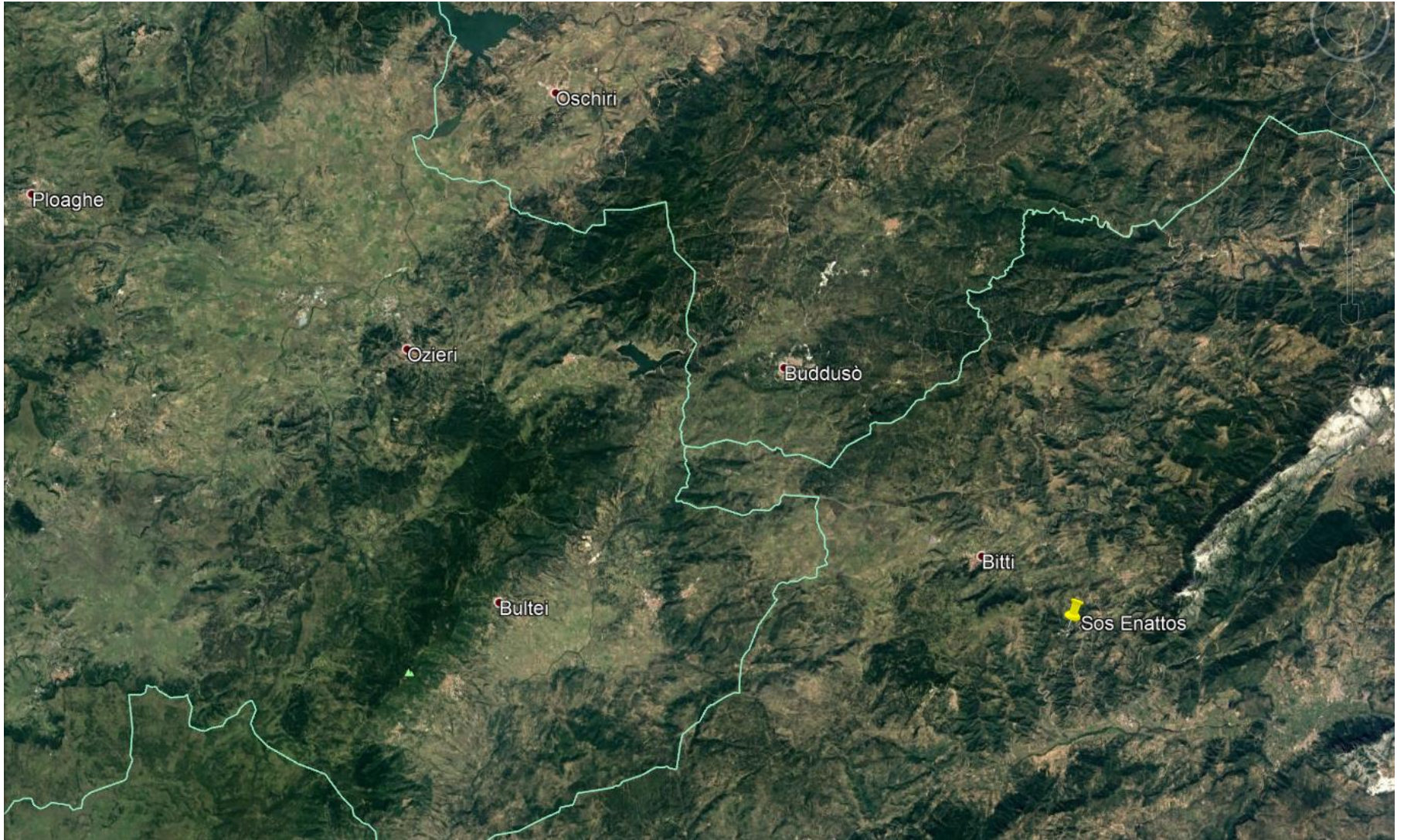
FIRST STUDIES: LOCATION



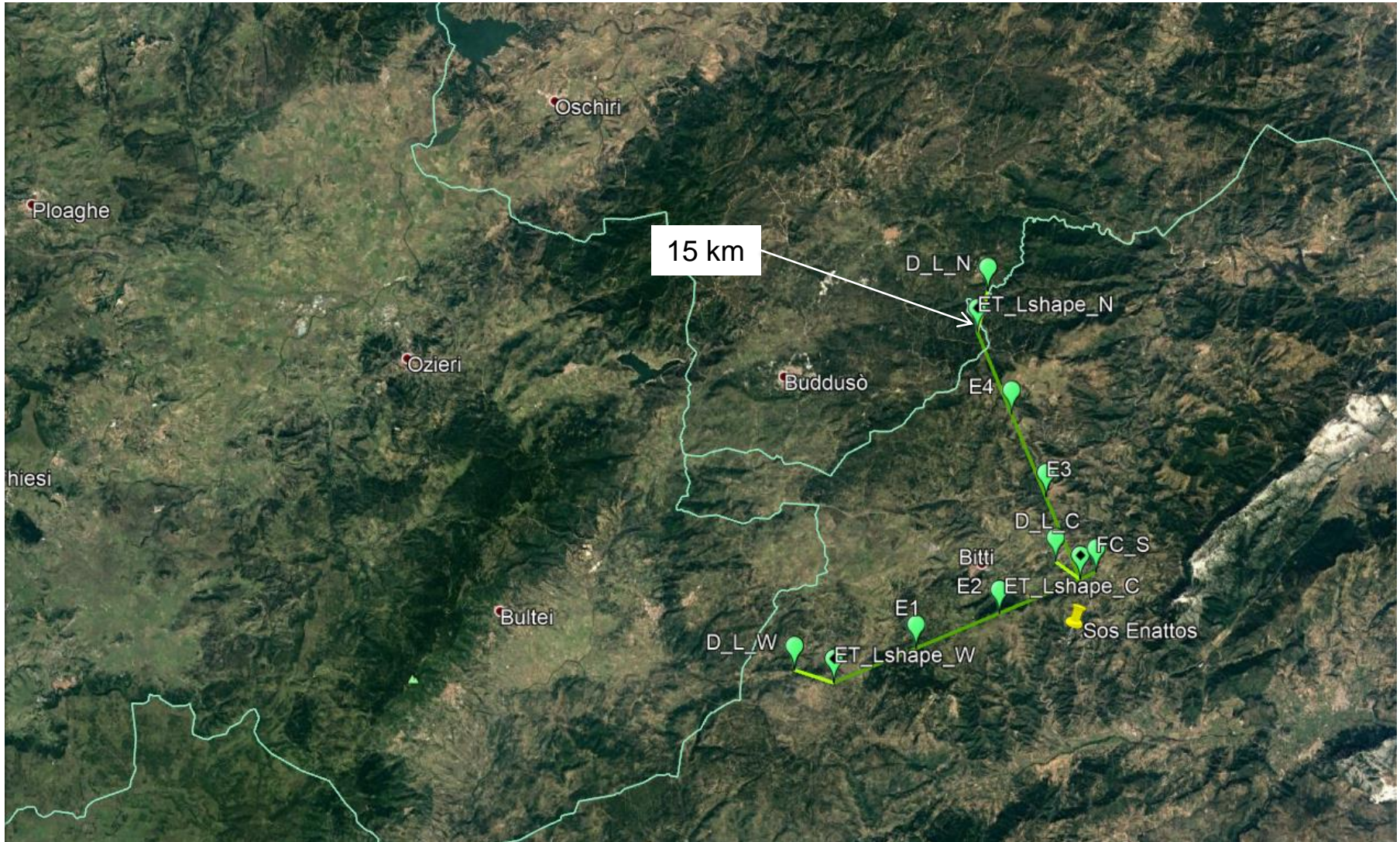
LOCATION - TRIANGLE



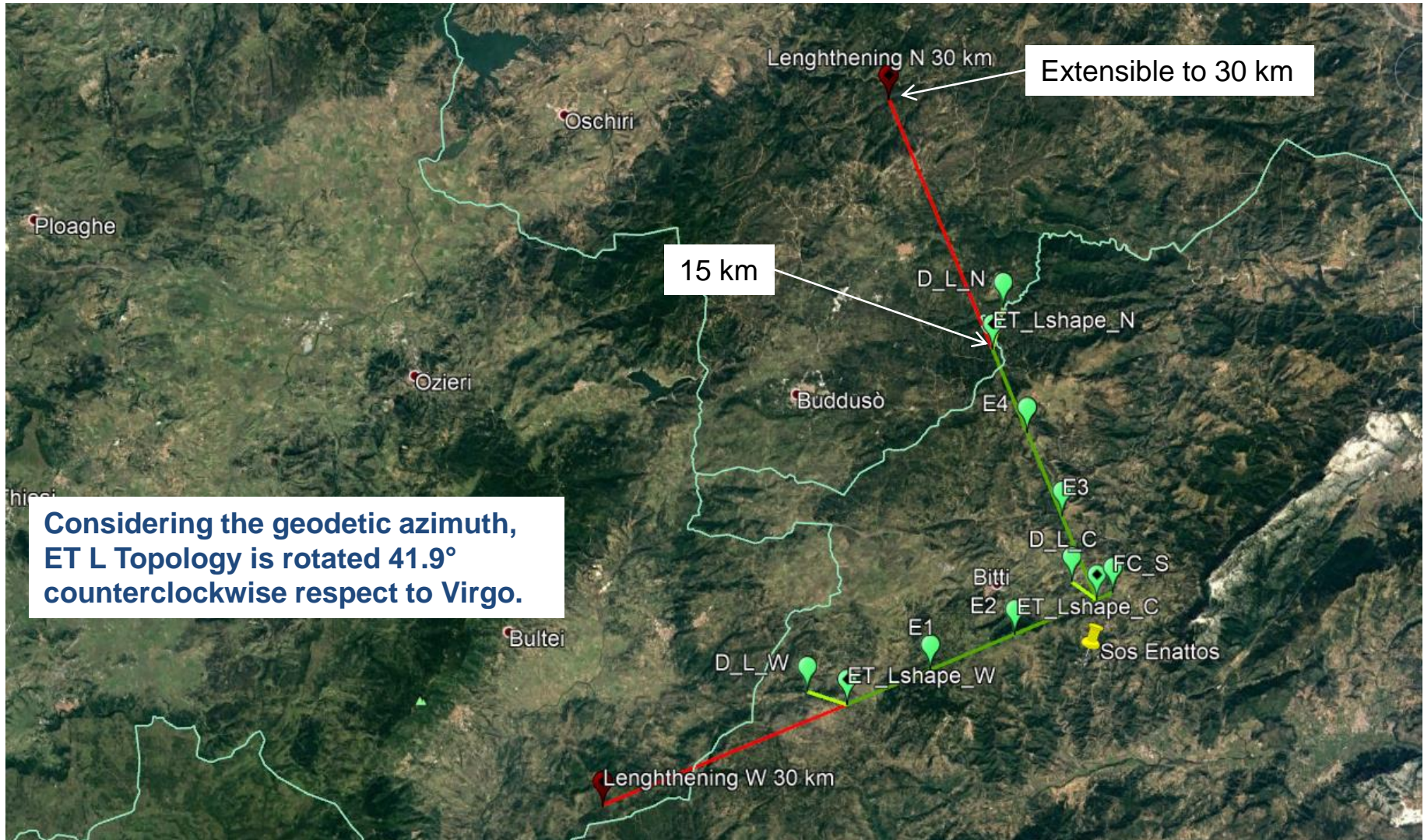
LOCATION - L



LOCATION - L



LOCATION - L



Very Next Steps all over the site

- 1) Geological explorations – rock analysis, compatible with costs, but at least in the three vertex locations (contribution of geo-physicists from Uniss)
- 2) Extensive study of seismic and newtonian noise in the whole site
- 3) Socio-economic impact – a team is being formed – contributions of economist from Uniss)

The SAR-GRAV laboratory in SOS-Enattos

Agreement INFN with Regione Sardegna and IGEA

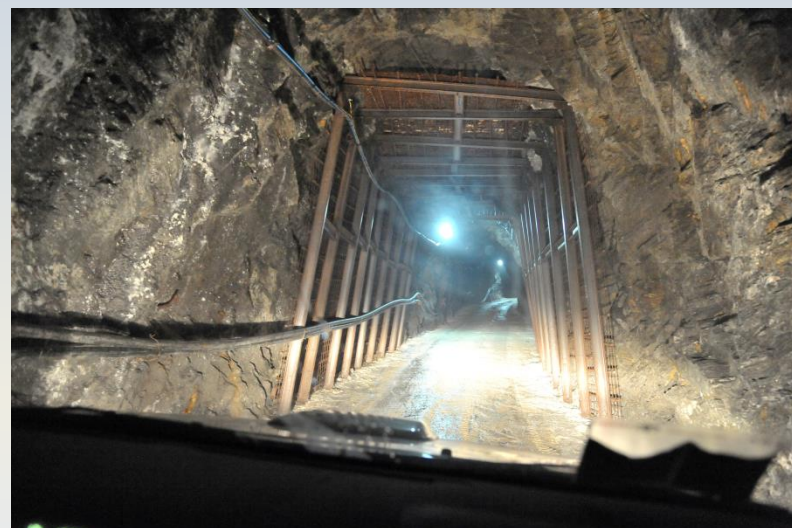


- An agreement as been signed to create the SAR-GRAV Laboratory. The mine is property of Regione Sardegna throught the consortium IGEA. The infrastrucure has been funded by regione Sardegna and INFN and INGV (Istituto Nazionale Geofisica e Vulcanologia) will use it.
- The underground laboratory will be approximately 200 m². The design of the laboratory is done in collaboration among the civil engeneering of IGEA and INFN scientists. The laboratory will host experiments in gravitation that need a seismically site.



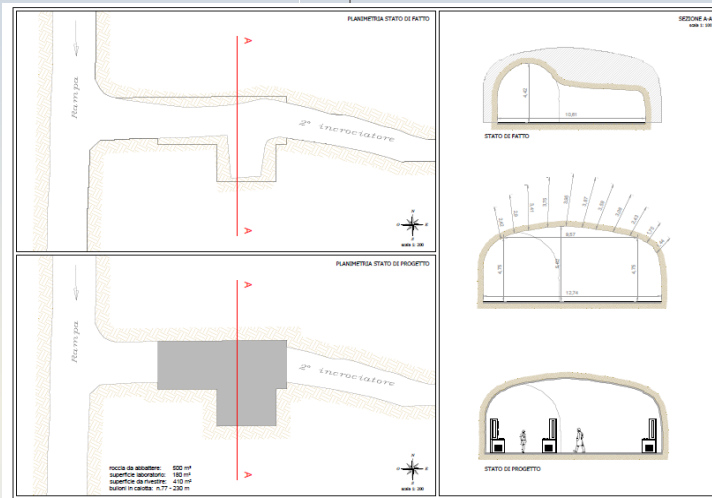
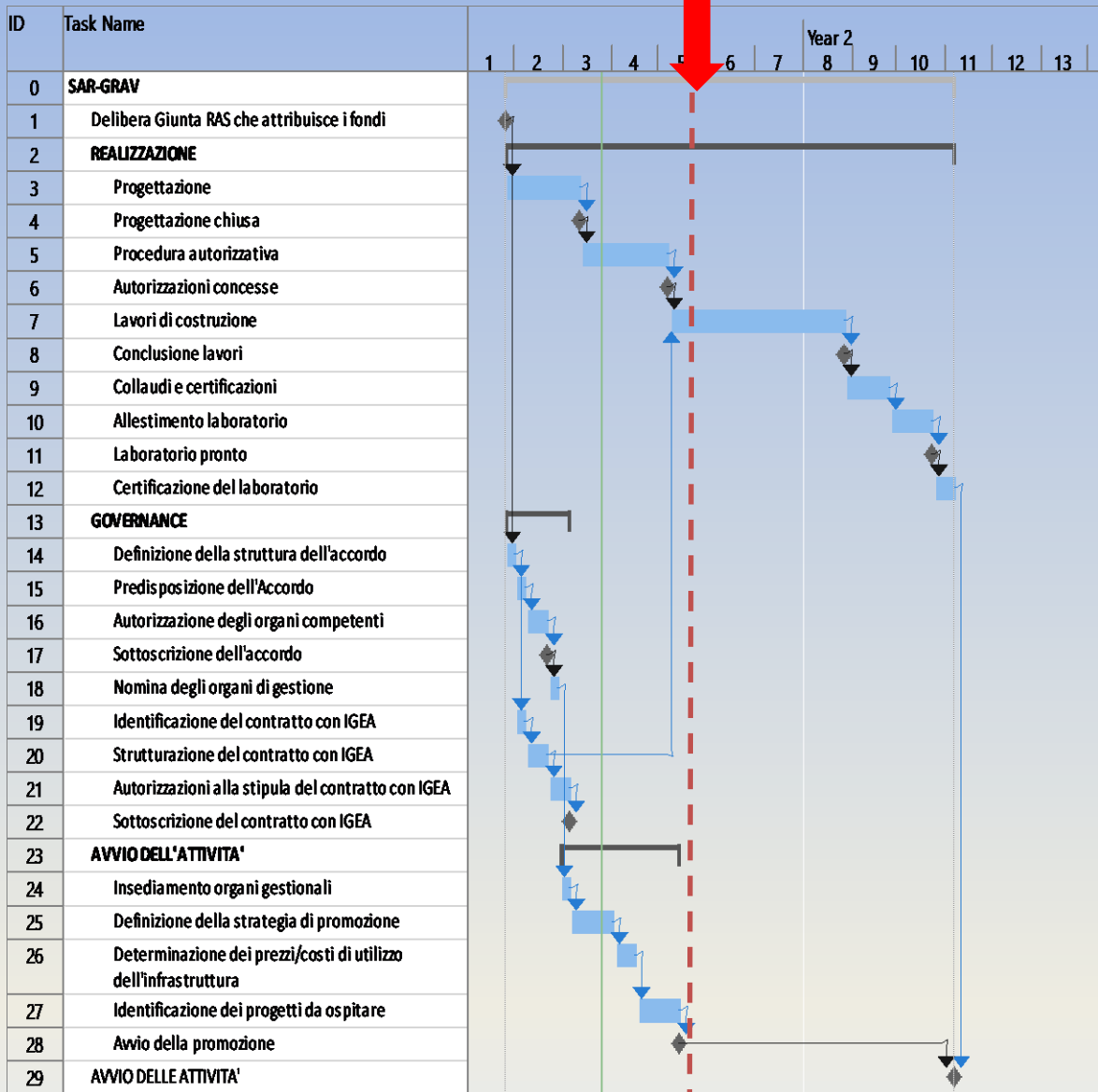
SAR-GRAV LAB

Works have started on surface building – enlargement of the cavern expected to start in few weeks from now



Caverna 110 m sotto terra raggiungibile con auto.

SAR-GRAV TIMELINE



The first experiment – Archimedes – is expected to bring in Sos-Enattos the main chamber of the apparatus within next summer (2019)

The candidature

ITALY GOVERNMENT SUPPORT

17 Meuros for AdV+, ET R&D and support of the Sos Enattos candidature

ONDE GRAVITAZIONALI: MIUR, INFN E UNISS CANDIDANO LA REGIONE SARDEGNA A OSPITARE IL FUTURO OSSERVATORIO INTERNAZIONALE

📅 Pubblicato: 22 Febbraio 2018



COMUNICATO CONGIUNTO MIUR/INFN/REGIONE SARDEGNA/UNISS_Il Ministero dell'Istruzione, dell'Università e della Ricerca sosterrà la candidatura della Regione Sardegna a ospitare un Centro europeo per l'Osservatorio delle onde gravitazionali nella miniera di Sos Enattos a Lula. Il MIUR, la Regione, l'Istituto Nazionale di Fisica Nucleare e l'Università di Sassari hanno firmato un Protocollo d'intesa finalizzato a mettere in atto ogni iniziativa utile a favorire l'insediamento della infrastruttura

Einstein Telescope nell'Isola, anche con lo scopo di entrare nella lista delle infrastrutture di ricerca riconosciute a livello europeo. Il progetto era stato presentato lo scorso 7 febbraio a Roma alla ministra Valeria Fedeli dal presidente della Regione Francesco Pigliaru e dall'assessore della Programmazione

REGIONE SARDEGNA COMMITMENT



- ❑ Regione Sardegna has promised to realized all the roads and the auxiliary surface infrastructure required by ET
- ❑ Regione Sardegna is surveying the territory and preparing to propose sites for the disposal of the large amount of excavated rock (several millions of m³)

A NEW MISSION FOR SARDINIA



50' drive from Olbia airport to the Sos Enattos mine (85 km)



“ARIA” PROJECT
(for the Gran Sasso Dark Side DM detector)

