
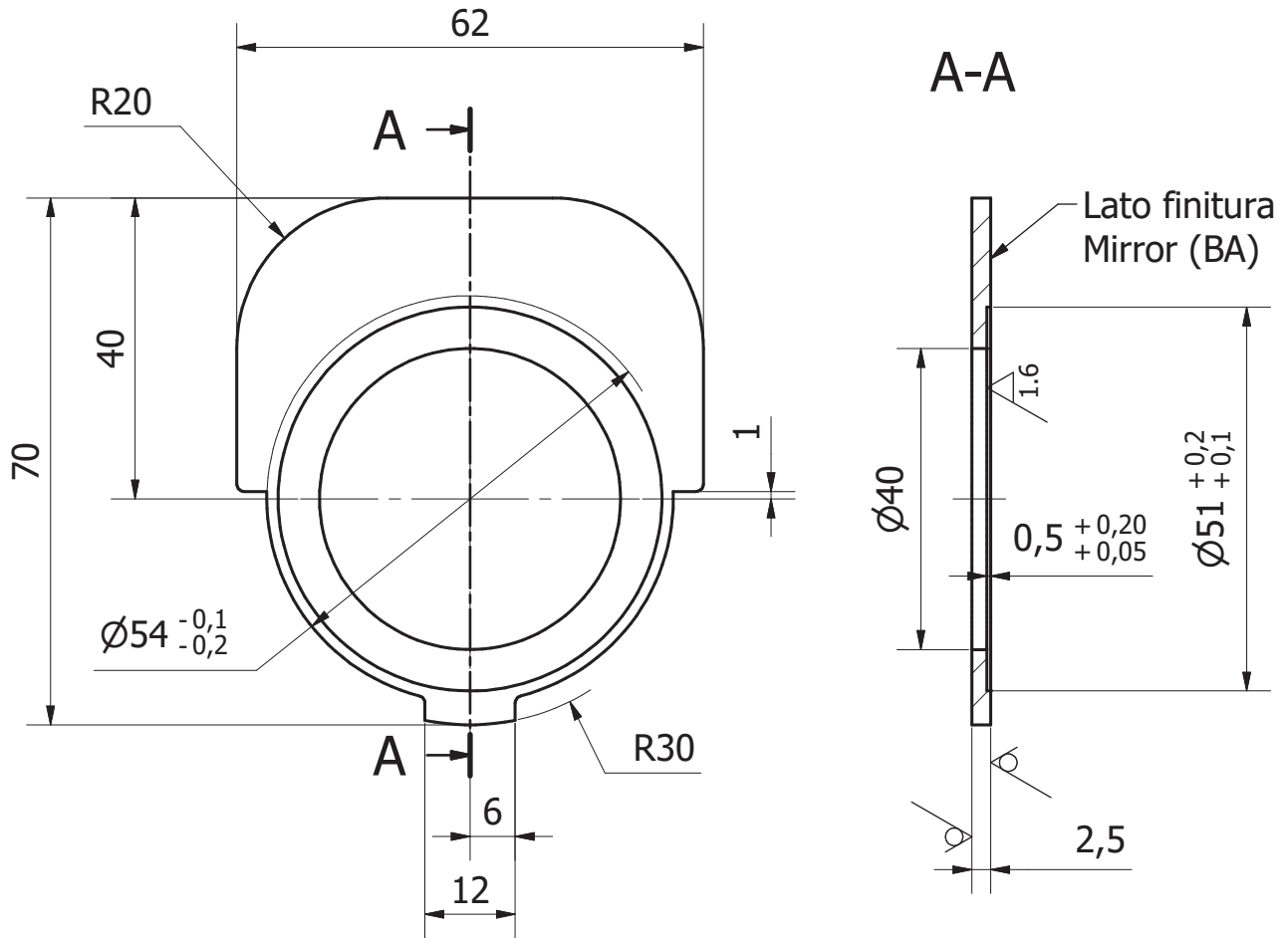


2	1	D50,8 Th.0,3	Wafer	0,001 kg
ref.	pieces	standard	description	weight
Commercial Materials				

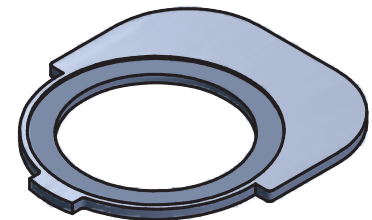
5	3	1516-D-1	Holed bolt M3x8	0 kg
4	1	1515-D-1	Base	0,95 kg
3	1	1514-D-1	Ring	0,06 kg
1	1	1513-D-1	Wafer support	0,04 kg
ref.	pieces	draw.	added legend	weight

filename 0418-A-1-VAC-WaferSupport.idw		title Wafer support		date 15/06/2017	scale 1:1
department				designed by A.Buggiani	
customer				drawing by A.Buggiani	
 EGO European Gravitational Observatory INFN - CNRS		section reference	drawing from	approval by A.Pasqualetti	
		code EGO-DWG-VAC 0418-A-1	index 1	format A3	sheet 1 / 1
drawing is to EGO property - reproduction drawing is forbidden					

Note: Mod-A-GEN-01




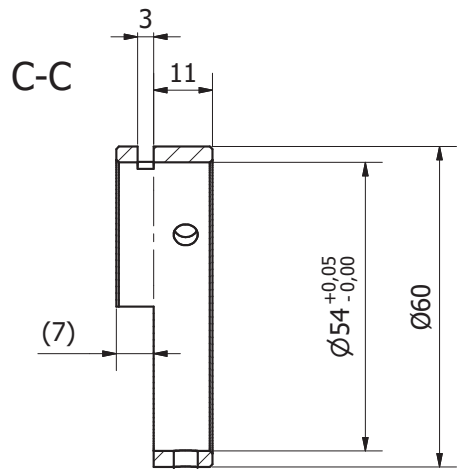
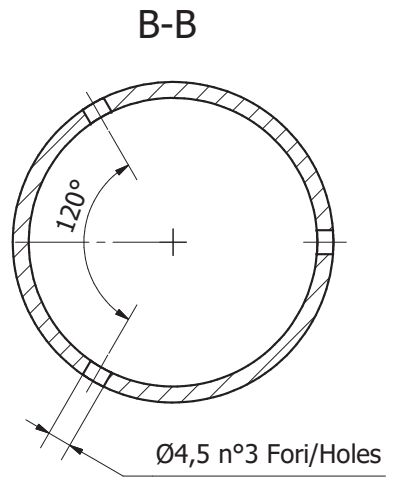
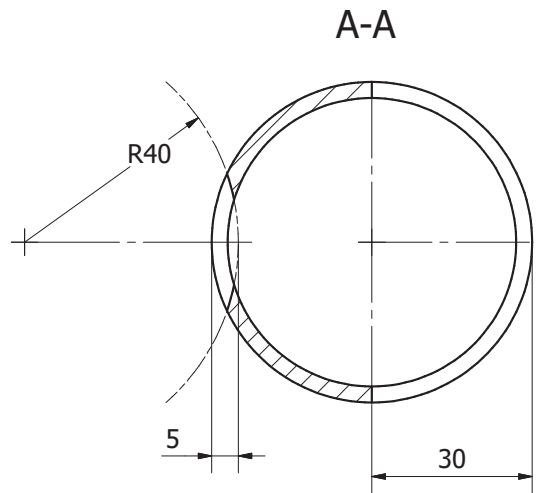
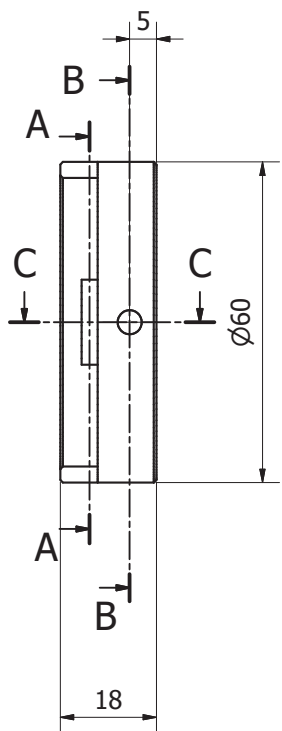
Note: Maneggiare con cura;
 il pezzo finito non deve avere incisioni o ammaccature
 sulle superfici.
 Handle with care;
 the finished piece mustn't have incisions or dents on
 the surfaces.



Togliere bave e spigoli vivi / Remove burrs and sharp edges
 Smussi non quotati / Unspecified Chamfers: 1x45°
 Raggi non quotati / Unspecified radius: R1



-	-	AISI 304	Lamiera/Sheet metal Sp./Th.2,5 "Mirror BA"	0.04 kg	1:1	Note:						
ref.	pieces	materials	raw materials	weight	scale							
General machining tolerances UNI ISO 22768 fH												
Dimensions	<6	>6-30	>30-120	>120-400	>400-1000	>1000-2000	>2000-4000	>4000	Dimensions	<100	>100-300	>300-1000
Linear. toll.	±0.05	±0.1	±0.15	±0.2	±0.3	±0.5	-	-	≡	0.2	0.3	0.4
Angular. toll.	±1°	±0°30'	±0°20'	±0°10'	± 0°5'	referred to the shortest side			∕	0.1	0.2	0.3
filename 1513-D-1-VAC.idw		title Mirror support		date 15/06/2017								
department		designed by A.Buggiani		drawing by A.Buggiani								
customer		approval by A.Pasqualetti		index 1								
 EGO European Gravitational Observatory <i>INFN - CNRS</i>		section reference		details from 0418-A-1		format A4		sheet 1 / 1				
		code EGO-DWG-VAC 1513-D-1-VAC										
drawing is to EGO property - reproduction drawing is forbidden												



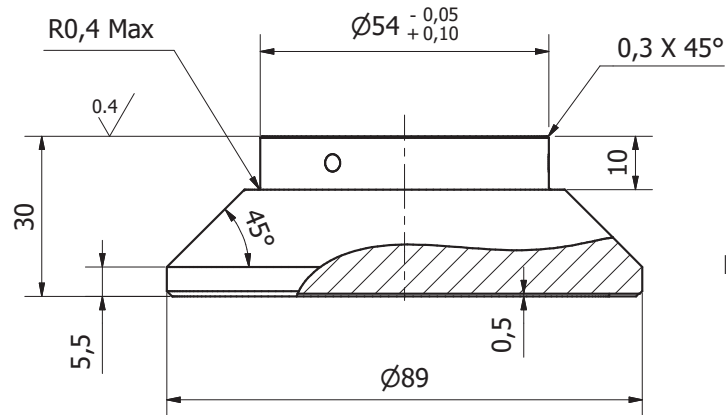
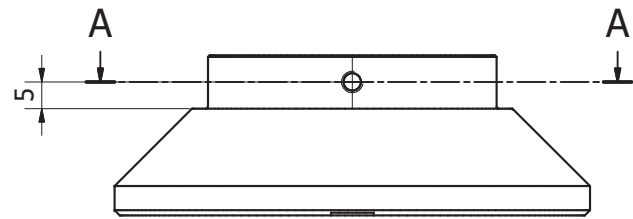
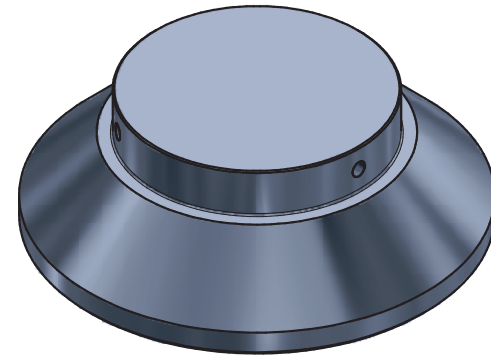
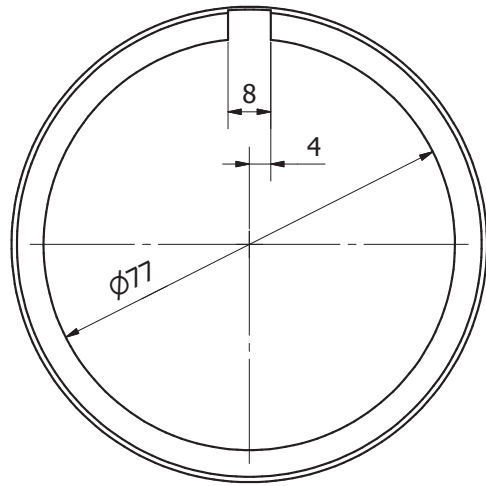
Note: Maneggiare con cura;
il pezzo finito non deve avere incisioni o ammaccature sulle superfici.
Handle with care;
the finished piece mustn't have incisions or dents on the surfaces.

Togliere bave e spigoli vivi / Remove burrs and sharp edges
Smussi non quotati / Unspecified Chamfers: 1x45°
Raggi non quotati / Unspecified radius: R1



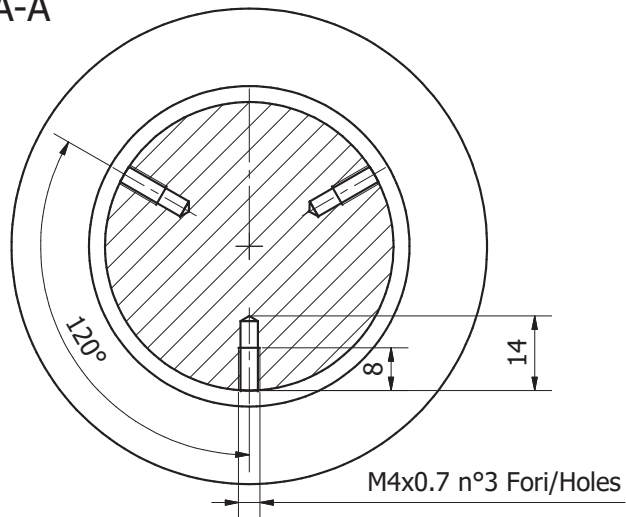
-	-	AISI 304 L	Tube/Pipe D60,3 Sp./Th.3,6	0.06 kg	1:1	Note:							
ref.	pieces	materials	raw materials	weight	scale								
General machining tolerances UNI ISO 22768 fH				Dimensions									
Dimensions	<6	>6-30	>30-120	>120-400	>400-1000	>1000-2000	>2000-4000	>4000	⊥	<100	>100-300	>300-1000	
Linear. toll.	±0.05	±0.1	±0.15	±0.2	±0.3	±0.5	-	-	≡	0.2	0.3	0.4	
Angular. toll.	±1°	±0°30'	±0°20'	±0°10'	± 0°5'			referred to the shortest side		∕	0.1	0.2	0.3
filename	1514-D-1-VAC.idw		department	Ring				date	15/06/2017				
customer	customer		Ring				designed by	A.Buggiani					
customer			Ring				drawing by	A.Buggiani					
customer			Ring				approval by	A.Pasqualetti					
customer			Ring				section reference	details from		index			
customer			Ring				0418-A-1		1		format		
customer			Ring				EGO-DWG-VAC 1514-D-1		A3		sheet		
customer			Ring				EGO-DWG-VAC 1514-D-1		1		1 / 1		
drawing is to EGO property - reproduction drawing is forbidden													

Mod-D-FH-01

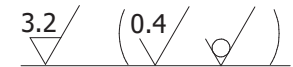


Note: Maneggiare con cura;
il pezzo finito non deve avere incisioni o ammaccature
sulle superfici.
Handle with care;
the finished piece mustn't have incisions or dents on
the surfaces.

A-A



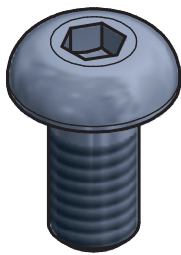
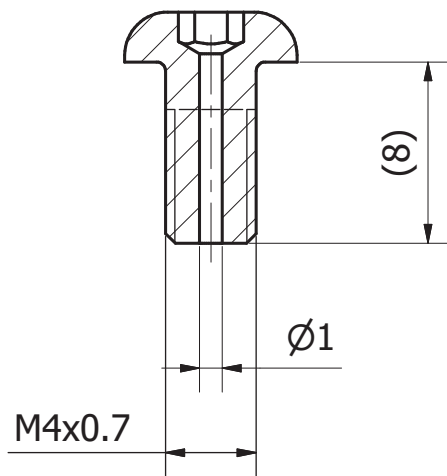
Togliere bave e spigoli vivi / Remove burrs and sharp edges
Smussi non quotati / Unspecified Chamfers: 1x45°
Raggi non quotati / Unspecified radius: R1



-	-	AISI 304 L		Laminato/Cold-rolled D90				0.95 kg	1:1		Note:	
ref.	pieces	materials		raw materials				weight	scale			
General machining tolerances UNI ISO 22768 fH								Dimensions				
Dimensions	<6	>6-30	>30-120	>120-400	>400-1000	>1000-2000	>2000-4000	>4000	<100	>100-300	>300-1000	
Linear. toll.	±0.05	±0.1	±0.15	±0.2	±0.3	±0.5	-	-	0.2	0.3	0.4	
Angular. toll.	±1°	±0°30'	±0°20'	±0°10'	± 0°5'			referred to the shortest side	0.5	0.5	0.5	
filename	1515-D-1-VAC.idw						title	Base			date	15/06/2017
department							customer				designed by	A.Buggiani
customer											drawing by	A.Buggiani
section reference		details from		approval by		index		format	sheet			
code		EGO-DWG-VAC 1515-D-1		A.Pasqualetti		1		A3	1 / 1			
drawing is to EGO property - reproduction drawing is forbidden												

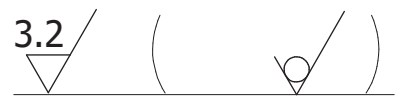


Mod-D-IH-01



Note: Maneggiare con cura;
il pezzo finito non deve avere incisioni o ammaccature
sulle superfici.
Handle with care;
the finished piece mustn't have incisions or dents on
the surfaces.

Togliere bave e spigoli vivi / Remove burrs and sharp edges
Smussi non quotati / Unspecified Chamfers: 1x45°
Raggi non quotati / Unspecified radius: R1



-	-	Classe A2	Bullone/Bolt ISO 7380-1 M4 x 8						0 kg	3:1			
ref.	pieces	materials	raw materials						weight	scale			
General machining tolerances UNI ISO 22768 fH									Dimensions	<100	>100-300	>300-1000	
Dimensions	<6	>6-30	>30-120	>120-400	>400-1000	>1000-2000	>2000-4000	>4000		0.2	0.3	0.4	
Linear. toll.	±0.05	±0.1	±0.15	±0.2	±0.3	±0.5	-	-		0.5	0.5	0.5	
Angular. toll.	±1°	±0°30'	±0°20'	±0°10'	± 0°5'			referred to the shortest side			0.1	0.2	0.3
filename 1516-D-1-VAC.idw		department		title Holed bolt M4x8					date 15/06/2017				
		customer							designed by A.Buggiani				
									drawing by A.Buggiani				
		European Gravitational Observatory INFN - CNRS		section reference			details from 0418-A-1		approval by A.Pasqualetti				
				code EGO-DWG-VAC 1516-D-1					index 1	format A4	sheet 1 / 1		
drawing is to EGO property - reproduction drawing is forbidden													

Note:

Mod-D-fH-01