

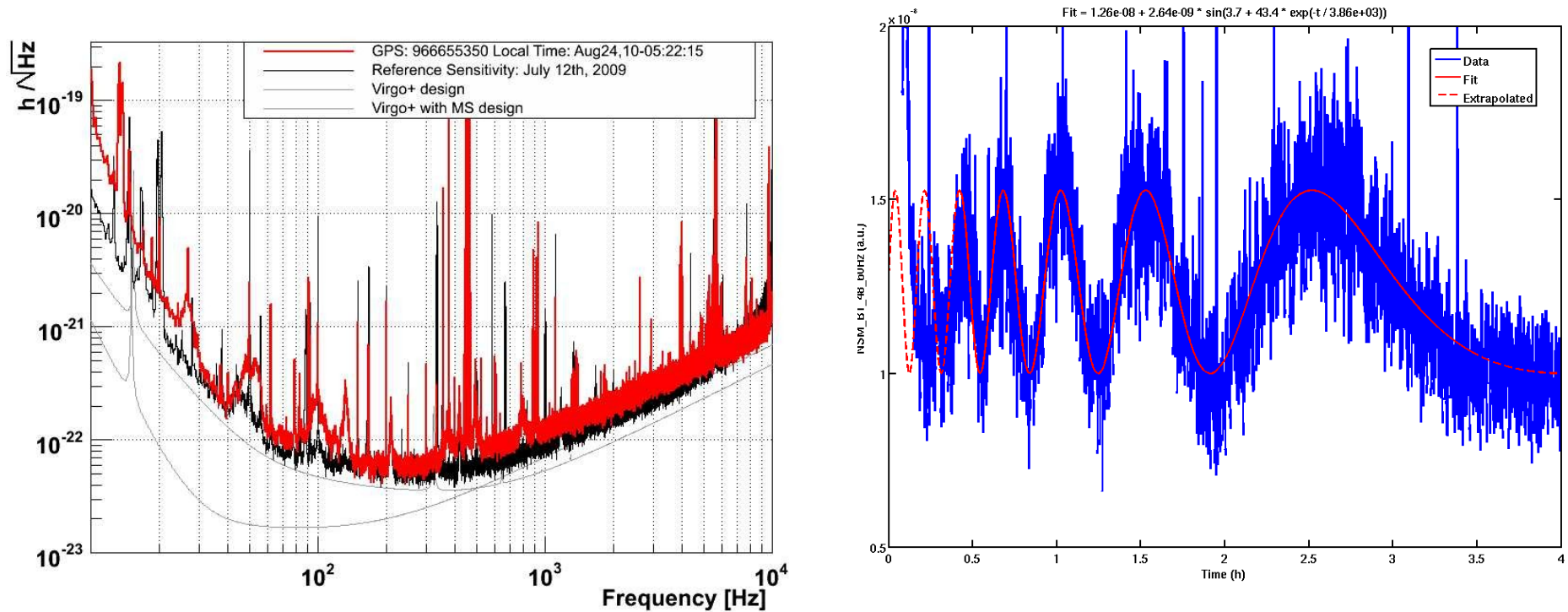
ITF Status

Bas Swinkels for the commissioning crew

Last week overview

- Run is going smooth:
 - Science mode duty cycle $> 80\%$
 - Several locks lasting more than a day
 - Horizon fluctuating between 6 and 8 Mpc
- Only real problem related to TCS on Sunday night
 - NI laser switched off by safety circuit, threshold too low?
 - Lost half a day due to usual locking/alignment problems
 - Power stabilization still off

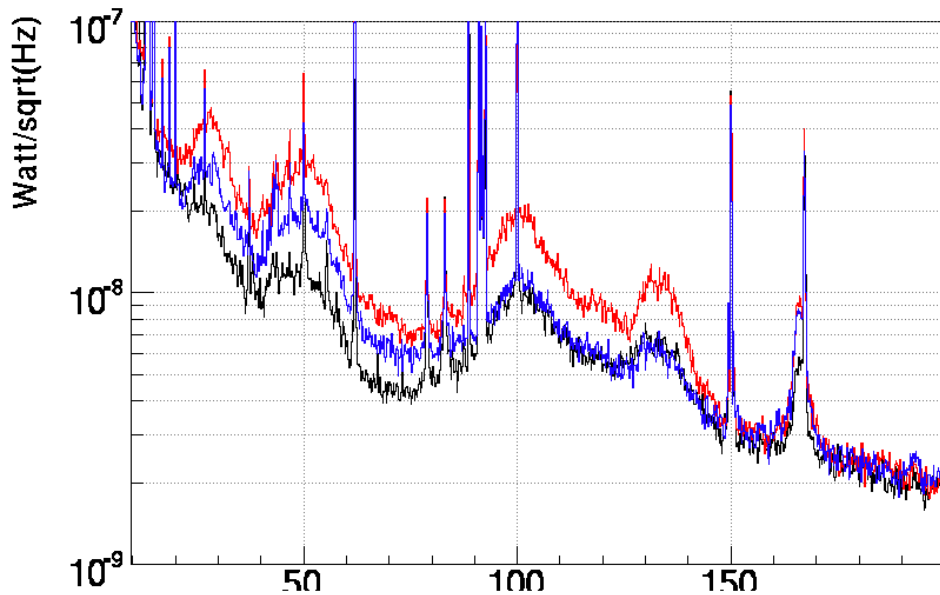
Diffused light detection tower



- Bumps around 30, 50, 100 and 130 Hz
- Modulated in time like 'etalon fringes'
- Well predicted by diffused light projection using SETODE
- Very sensitive to alignment of detection bench

Diffused light detection tower

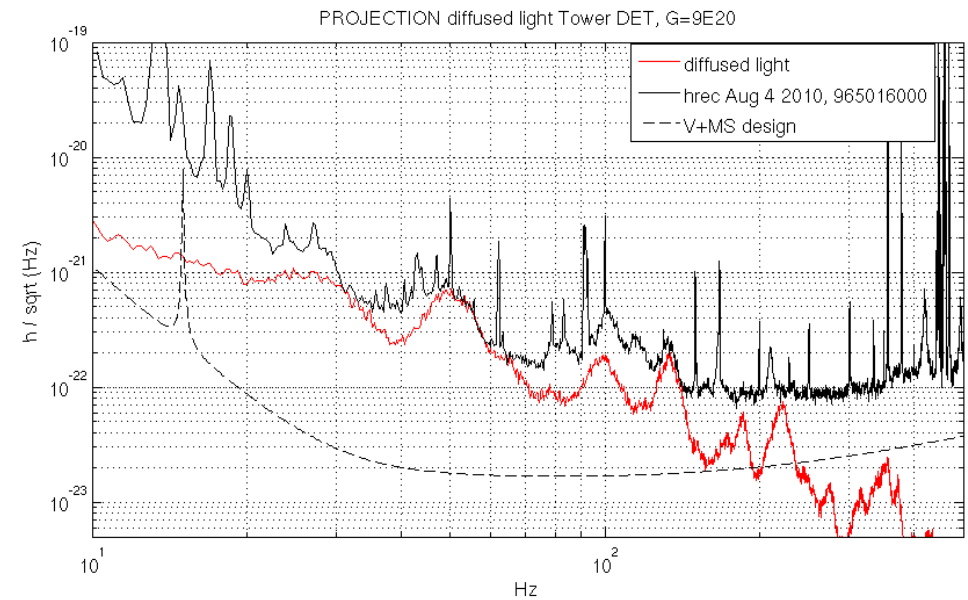
V1:Pr_B1_ACp_FFT



966097494.0000 : Aug 17 2010 16:24:39 UTC

966096285.0000 : Aug 17 2010 16:04:30 UTC

966100776.81 : Aug 17 2010 17:19:21 UTC dt:6.55s nAv:141



- Culprits:

- 27 Hz: HVAC of DAQ room, disappears with switch-off
- 100 Hz: all electrical machines, maybe fans of DET turbo pump, should be detached
- 132 Hz: resonance of vacuum tank

Glitches

- See talk Didier
- High frequency: related to value of B1_ACq
 - zeroed using OB_ty, servo made faster
 - switch MICH to B1_ACq still not working
- Up to 20% of triggers caused by 458 Hz violin modes
 - violin notches to be optimized
- Half an hour of data with low glitch rate on Friday (10 Hz -> 2 Hz)
 - Maybe related to B1_d4, not confirmed
 - Should be understood better

Locking

- BETA servo sometimes unstable, switched off for now
 - probably related to DARM gain servo
 - Might be a strange problem in demodulation of 379 Hz line
 - Note: sensitive and horizon based on $B1*TF$ might be wrong when Gain_Darm is wrong
 - Added some extra channels for debugging
- Etalon effect
 - New server added that tracks frequency of butterfly modes
 - Data of last few weeks to be analyzed offline

Commissioning plans

- Play with position of the etalons
- Improve violin notches
- Understand and fix problem with DARM/Beta servos
- Add box around B1 diodes
- Switch MICH to B1_ACq
- More studies of scattered light detection tower?

End