


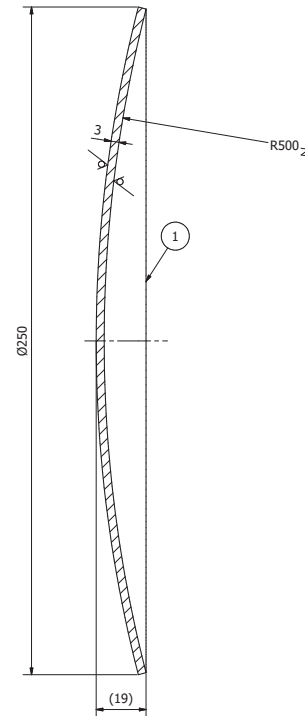
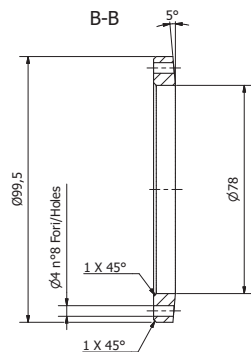
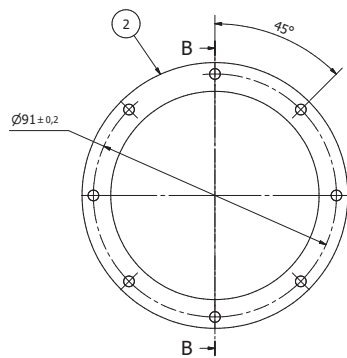
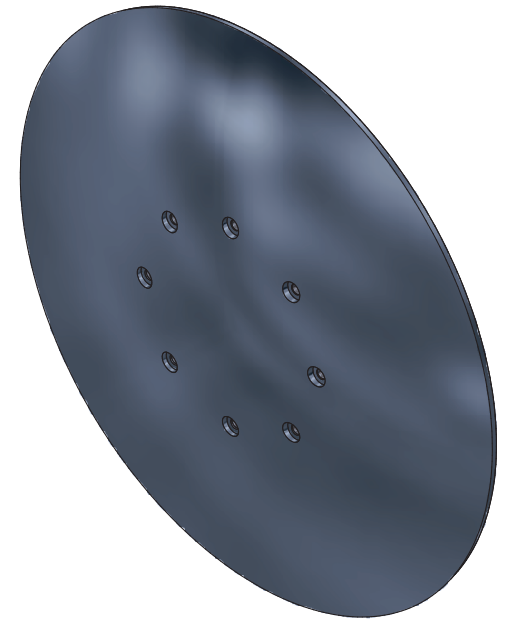
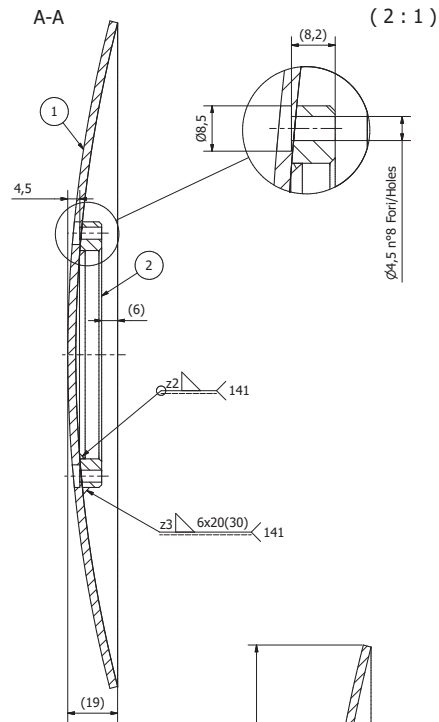
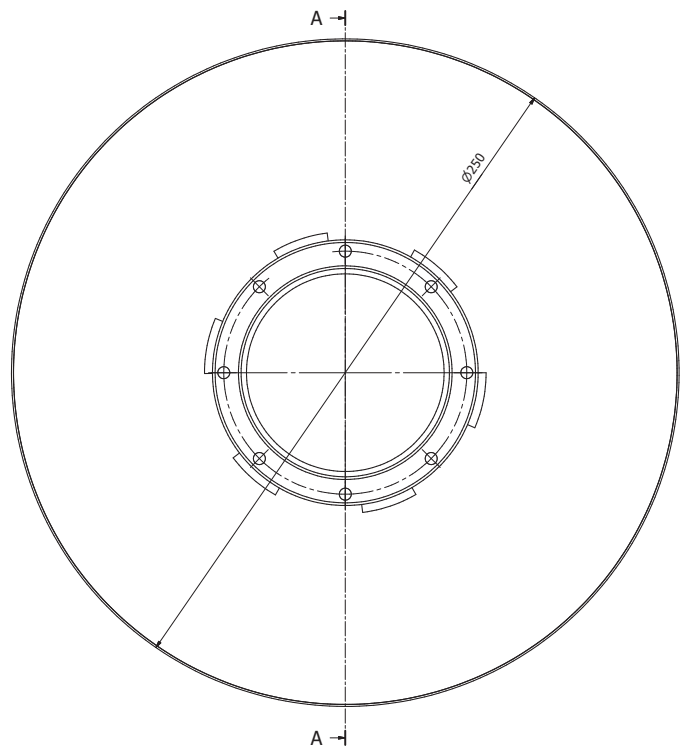
Total weight: 2,5 kg

4	8	ISO 7380-1 - M4 x 12	Vite con testa a bottone ed esagono incassato - Grado prodotto A	0,002 kg
ref.	pieces	standard	description	weight
Commercial Materials				

2	6	1518-D-1	Vite di bloccaggio	0 kg
3	1	1509-D-1	Schermo	1,36 kg
1	1	15i0-D-1	Supporto schermo	1,12 kg
ref.	pieces	draw.	added legend	weight

filename 0417-A-1-VAC-TowerShield.idw		title Tower shield D250		date 21/06/2017	scale 1:2
department		customer		designed by A.Buggiani	
customer				drawing by A.Buggiani	
 EGO European Gravitational Observatory INFN - CNRS		section reference S0000-1 (Adv)	drawing from	approval by A.Pasqualetti	
		code EGO-DWG-VAC 0417-A-1		index 1	format A3
drawing is to EGO property - reproduction drawing is forbidden					

Note: Mod-A-GEN-01

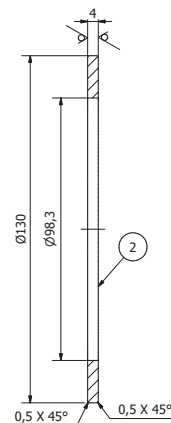
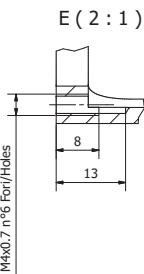
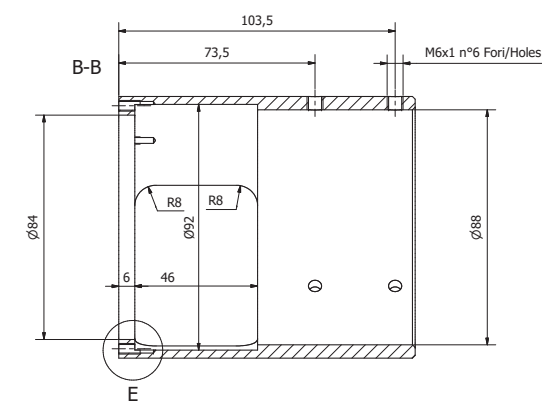
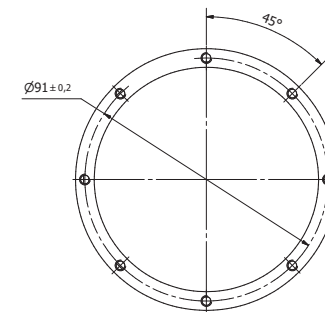
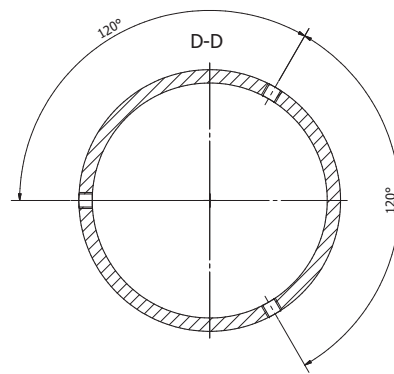
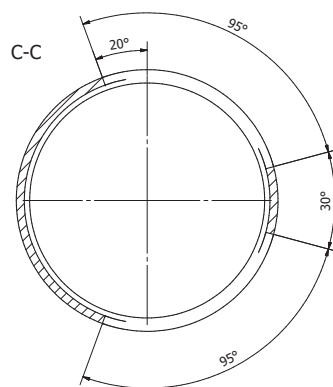
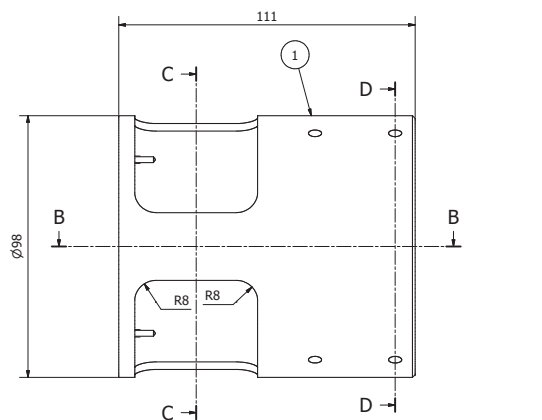
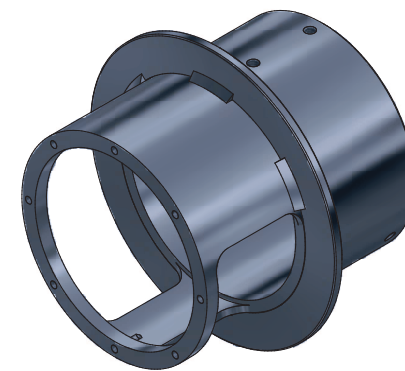
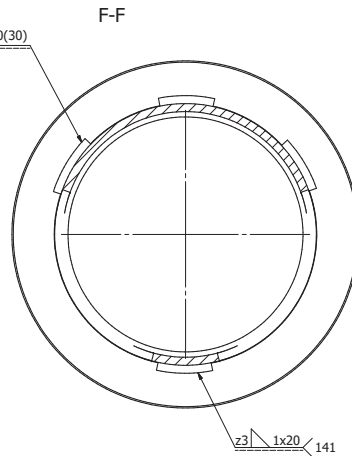
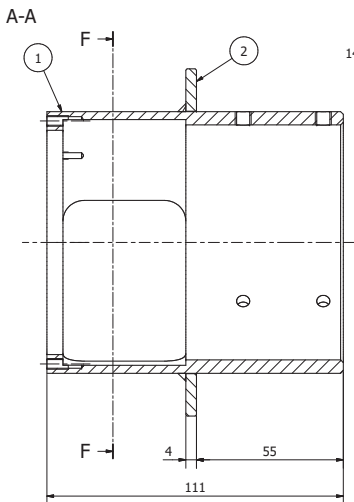
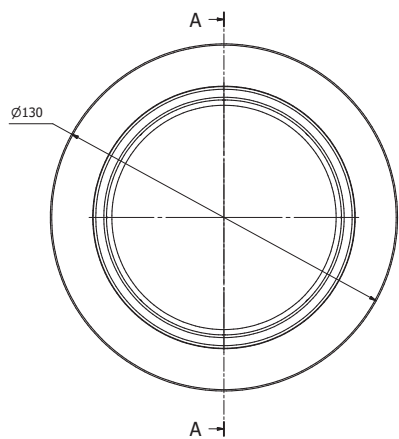


Note: Maneggiare con cura;
il pezzo finito non deve avere incisioni o ammaccature sulle superfici.
Handle with care;
the finished piece mustn't have incisions or dents on the surfaces.

Note (**)	Finitura superficiale:	Electroplucidatura standard EN ISO 15730
	Surface:	Electropolishing as standard EN ISO 15730
	Finishing:	15730

Togliere bavette e spigoli vivi / Remove burrs and sharp edges
Smussi non quotati / Unspecified Chamfers: 1x45°
Raggi non quotati / Unspecified radius: R1

2	1	AISI 304 L	Laminato/Cold-rolled D100	0.18 kg	
1	1	AISI 304 L	Lamiera/Sheet metal "2B" Sp./Th.3	1.19 kg	1:1
ref.	pieces	materials	raw materials	weight	scale
General machining tolerances UNE ISO 22768 mK				Dimensions	
Dimensions	<6	>6-30	>30-120	>120-400	>400-1000
Linear. toll.	±0.1	±0.2	±0.3	±0.5	±1.2
Angular. toll.	±1°	±0°30'	±0°20'	±0°15'	referred to the shortest side
file name	title			date	
2109-DWG-VAC-01	Tower Shield for venting			21/06/2017	
department	customer			designed by	
				A.Buggiani	
European Gravitational Observatory				drawing by	
EGO				A.Buggiani	
section reference		details from		approval by	
50000-1 (AdV)		0417-A-1		A.Pasqualetti	
code		index		format	
EGO-DWG-VAC 1509-D-1		1		A1	
sheet		1 / 1		drawing is EGO property - reproduction drawing is forbidden	



Note: Maneggiare con cura;
il pezzo finito non deve avere incisioni o ammaccature sulle superfici.
Handle with care;
the finished piece mustn't have incisions or dents on the surfaces.

Note ()** **Finitura superficiale:** Elettrolucidatura standard EN ISO 15730
Surface Finishing: Electropolishing as standard EN ISO 15730

Togliere bavette e spigoli vivi / Remove burrs and sharp edges
Smussi non quotati / Unspecified Chamfers: 1x45°
Raggi non quotati / Unspecified radius: R1

ref.		pieces	materials	raw materials	weight	scale
1	1	1	AISI 304 L	Tubo senza saldatura/Weldless Pipe D101,8 Sp./Th.10	0.93 kg	1:1
2	1	1	AISI 304 L	Lamiera /Sheet metal BA Sp./Th.4	0.18 kg	

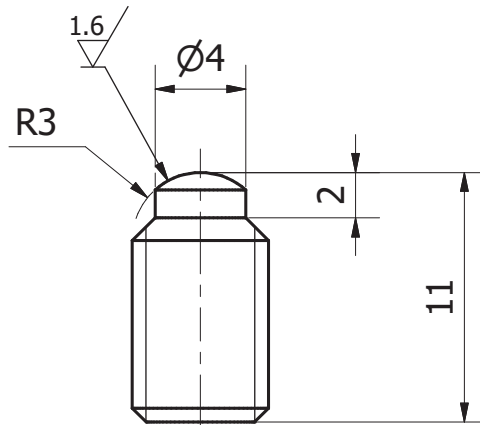
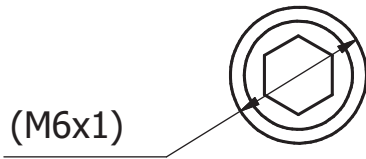
Dimensions		General machining tolerances UNE ISO 22768 mK						Dimensions				
Linear. toll.	Angular. toll.	<6	>6-30	>30-120	>120-400	>400-1000	>1000-2000	>2000-4000	>4000	<100	>100-300	>300-1000
±0.1	±1°	±0.2	±0.3	±0.5	±0.8	±1.2	±2	±3	±4	0.4	0.6	0.8
±0.1	±1°	±0.2	±0.3	±0.5	±0.8	±1.2	±2	±3	±4	0.2	0.4	0.6

client		date	
department	customer	21/06/2017	

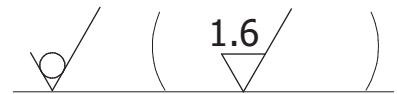
designed by		approved by	
A. Buggiani		A. Pasqualetti	

code		index		format		sheet	
EGO	50000-1 (AdV)	0417-A-1	1	A1	1/1		

drawing is EGO property - reproduction drawing is forbidden



Togliere bave e spigoli vivi / Remove burrs and sharp edges
 Smussi non quotati / Unspecified Chamfers: 1x45°
 Raggi non quotati / Unspecified radius: R1



-	-	Classe A2	ISO 4028 M6 x 12						0 kg	3:1	Note:	
ref.	pieces	materials	raw materials						weight	scale		
General machining tolerances UNI ISO 22768 fH									Dimensions	<100		>100-300
Dimensions	<6	>6-30	>30-120	>120-400	>400-1000	>1000-2000	>2000-4000	>4000	\perp	0.2	0.3	0.4
Linear. toll.	± 0.05	± 0.1	± 0.15	± 0.2	± 0.3	± 0.5	-	-	\equiv	0.5	0.5	0.5
Angular. toll.	$\pm 1^\circ$	$\pm 0^\circ 30'$	$\pm 0^\circ 20'$	$\pm 0^\circ 10'$	$\pm 0^\circ 5'$			referred to the shortest side	\parallel	0.1	0.2	0.3
filename 1518-D-1-VAC.idw		title Rounded Screw M6x12			date 21/06/2017			designed by A.Buggiani				
department		customer			drawing by A.Buggiani			approval by A.Pasqualetti				
EGO European Gravitational Observatory <i>INFN - CNRS</i>		section reference S0000-1 (AdV)			details from 0417-A-1			index 1				
		code EGO-DWG-VAC 1518-D-1			format A4			sheet 1 / 1				
drawing is to EGO property - reproduction drawing is forbidden												

Mod-D-fH-01